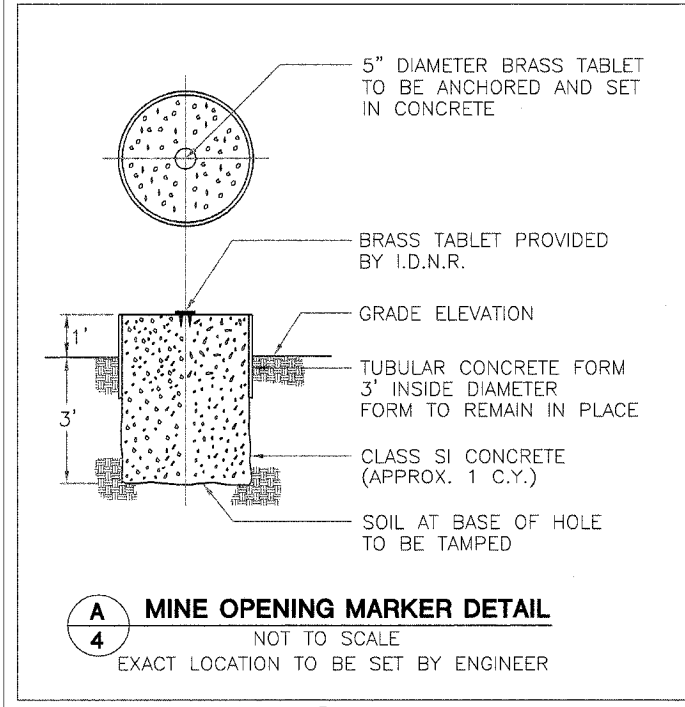
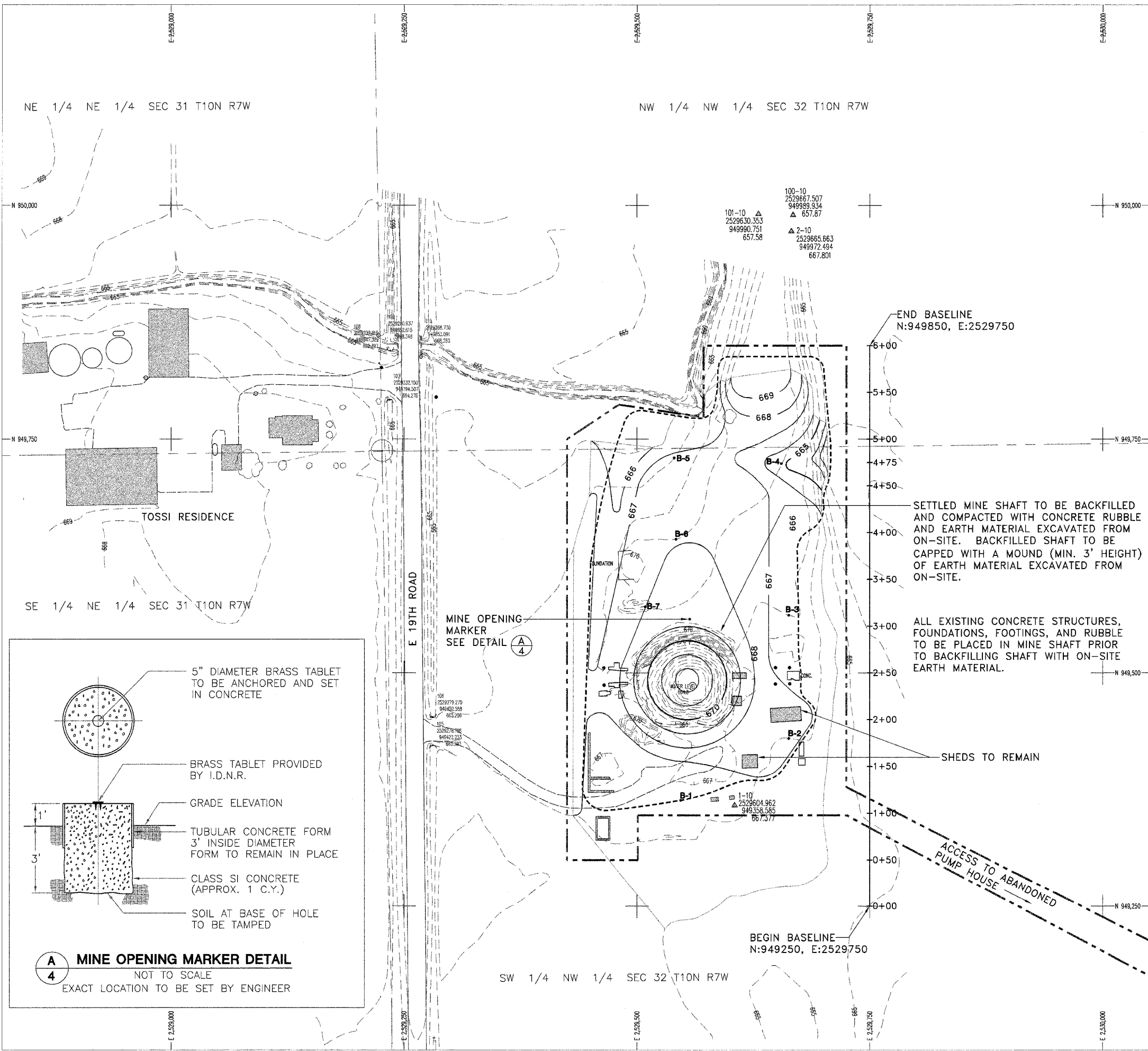


NE 1/4 NE 1/4 SEC 31 T10N R7W

NW 1/4 NW 1/4 SEC 32 T10N R7W

SE 1/4 NE 1/4 SEC 31 T10N R7W

SW 1/4 NW 1/4 SEC 32 T10N R7W



END BASELINE
N:949850, E:2529750

6+00
5+50
5+00
4+75
4+50
4+00
3+50
3+00
2+50
2+00
1+50
1+00
0+50
0+00

SETTLED MINE SHAFT TO BE BACKFILLED AND COMPACTED WITH CONCRETE RUBBLE AND EARTH MATERIAL EXCAVATED FROM ON-SITE. BACKFILLED SHAFT TO BE CAPPED WITH A MOUND (MIN. 3' HEIGHT) OF EARTH MATERIAL EXCAVATED FROM ON-SITE.

ALL EXISTING CONCRETE STRUCTURES, FOUNDATIONS, FOOTINGS, AND RUBBLE TO BE PLACED IN MINE SHAFT PRIOR TO BACKFILLING SHAFT WITH ON-SITE EARTH MATERIAL.

SHEDS TO REMAIN

ACCESS TO ABANDONED PUMP HOUSE

BEGIN BASELINE
N:949250, E:2529750

NOTE:
DUE TO THE UNKNOWN CONDITIONS THAT EXIST IN AND AROUND THE SHAFT, THE CONTRACTOR SHALL USE EXTREME CAUTION WHEN PERFORMING WORK NEAR THE SHAFT. THE ENGINEER RESERVES THE RIGHT TO INCREASE OR DECREASE THE QUANTITY FOR SPECIAL EXCAVATION AND BACKFILLING MATERIALS AS DETERMINED BY THE EXACT CONDITIONS ENCOUNTERED DURING SPECIAL EXCAVATION.

Legend

--- 665 ---	EXISTING CONTOUR
— 665 —	PROPOSED CONTOUR
- - - - -	SEEDING LIMITS
— — — — —	CONSTRUCTION LIMITS
— — — — —	EDGE OF ROAD
~~~~~	TREELINE
- - - - -	EDGE OF WATER
△	SURVEY CONTROL POINT
• B-1	BORING

