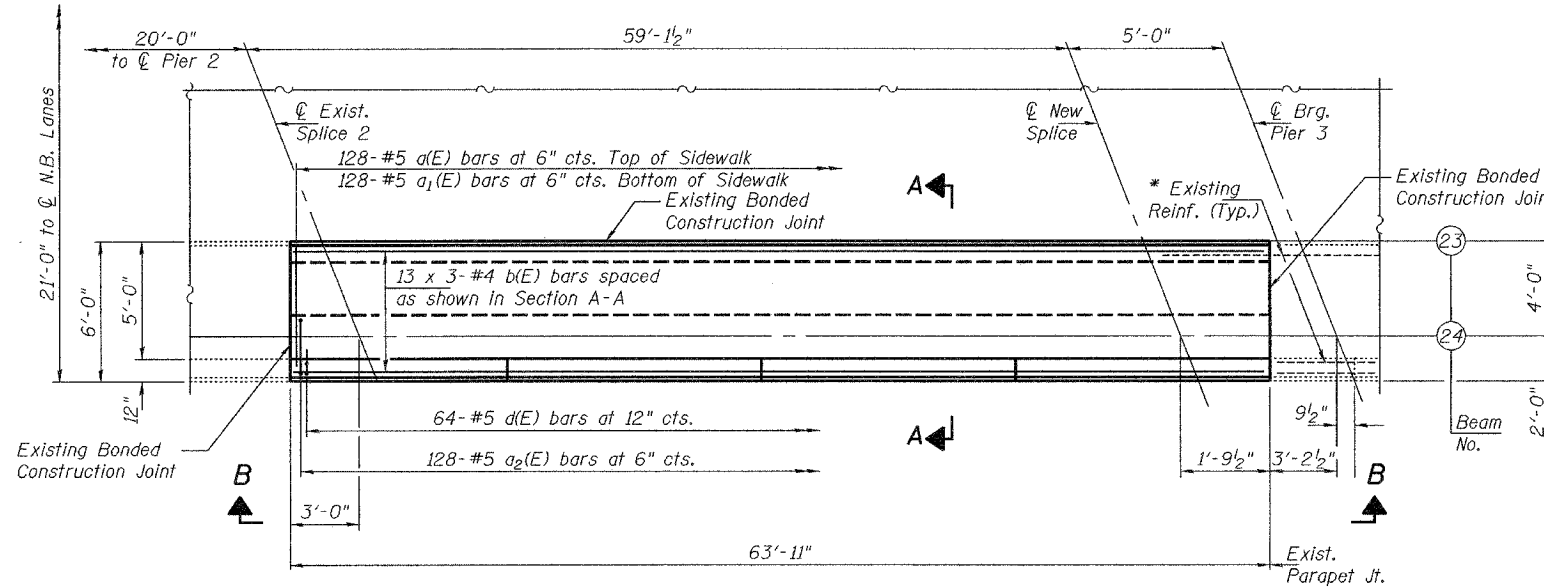


STATE OF ILLINOIS
DEPARTMENT OF TRANSPORTATION

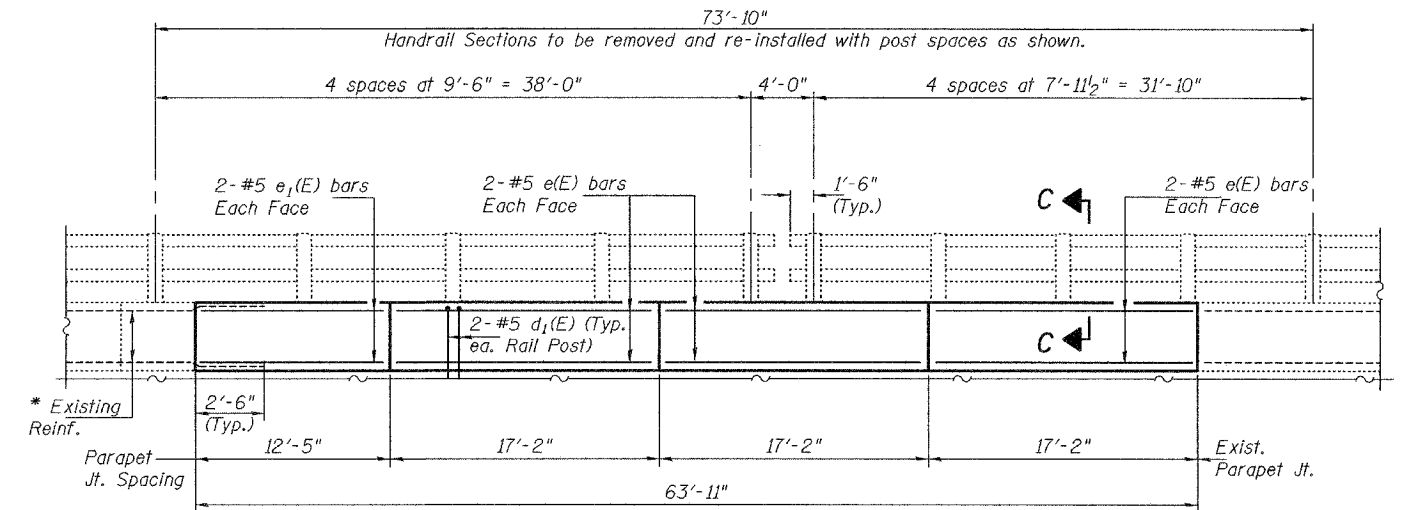
ROUTE NO.	SECTION	COUNTY	TOTAL SHEETS	SHEET NO.
		Cook	14	5
SHEET NO. 3				
5 SHEETS				
Contract Number: 60A60				



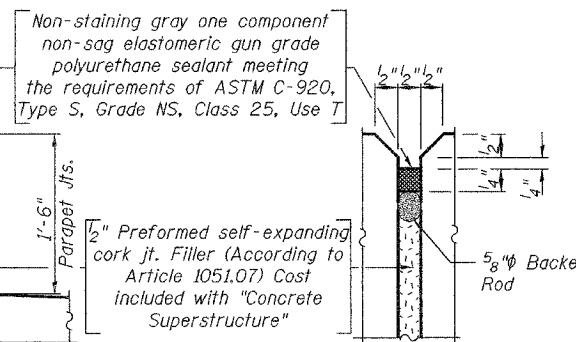
**PARTIAL PLAN
CONCRETE REMOVAL & REPLACEMENT**

Perimeters of concrete removal areas shall be saw cut $\frac{3}{4}$ " prior to the removal of concrete. Existing reinforcement shall be cut only if required for fitting bolts. Cut reinforcement shall be spliced as directed by the Engineer. Cost shall be included in the cost of "Concrete Superstructure".

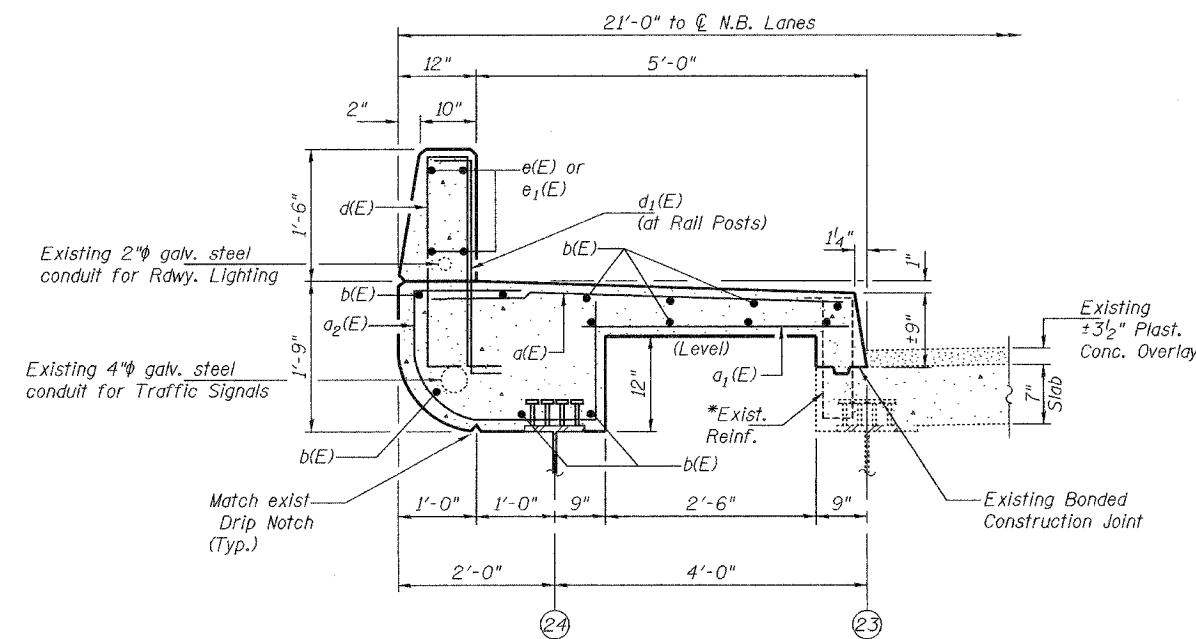
* Existing reinforcement bars extending into the removal area shall be cleaned, straightened and incorporated into the new construction.



VIEW B-B

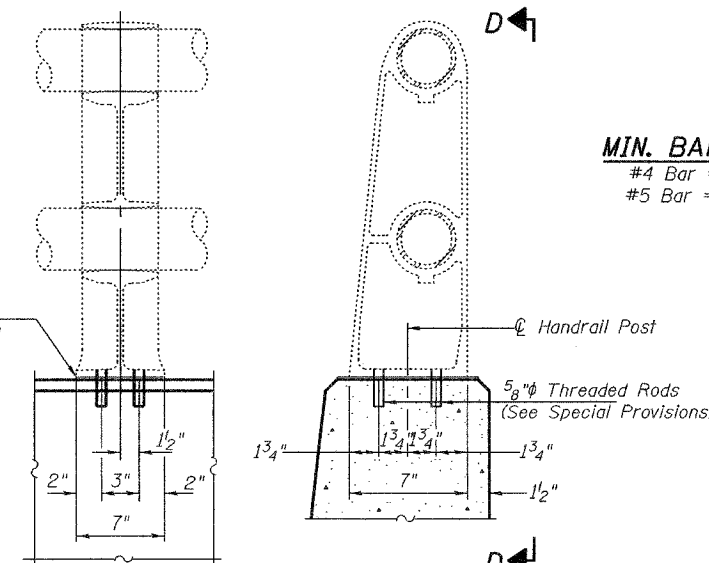


SECTION AT PARAPET



SECTION A-A

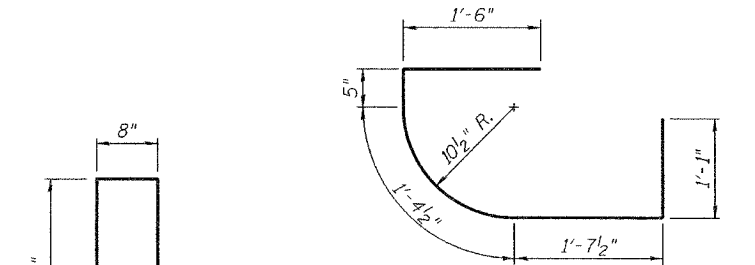
$\frac{1}{8}$ " Prefabricated Pad Cost shall be included in the cost of "Removing & Re-erecting Existing Railing".



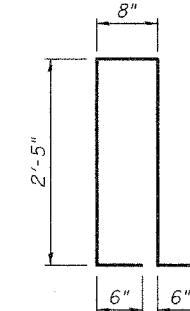
VIEW D-D

SECTION C-C

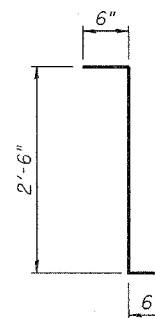
HANDRAIL POST DETAILS



BAR a2(E)



BAR d(E)



BAR d1(E)

BILL OF MATERIAL

Bar	No.	Size	Length	Shape
a1(E)	128	#5	5'-9"	—
a2(E)	128	#5	4'-6"	—
a2(E)	128	#5	6'-0"	U
b(E)	39	#4	22'-4"	—
d(E)	64	#5	6'-6"	—
d1(E)	16	#5	3'-6"	—
e(E)	12	#5	16'-10"	—
e1(E)	4	#5	12'-1"	—
Concrete Removal			Cu. Yd.	19.9
Concrete Superstructure			Cu. Yd.	19.9
Reinforcement Bars, Epoxy Coated			Lbs.	3,500

Reinforcement bars designated (E) shall be epoxy coated. Bars indicated thus 13 x 3-#4 etc. indicates 13 lines of bars with 3 lengths per line.

**BRIDGE REPAIRS
CONCRETE REMOVAL & REPLACEMENT DETAILS
F.A.I. 55 SEC. 207-0708
COOK COUNTY
S.N. 016-0316**

DESIGNED	S.J.B.
CHECKED	V.H.V.
DRAWN	Drew Christopher
CHECKED	S.J.B. V.H.V.

November 9, 2005
EXAMINED *John A. Morris*
ENGINEER OF STRUCTURAL SERVICES
PASSED *Ralph E. Anderson*
ENGINEER OF BRIDGES AND STRUCTURES