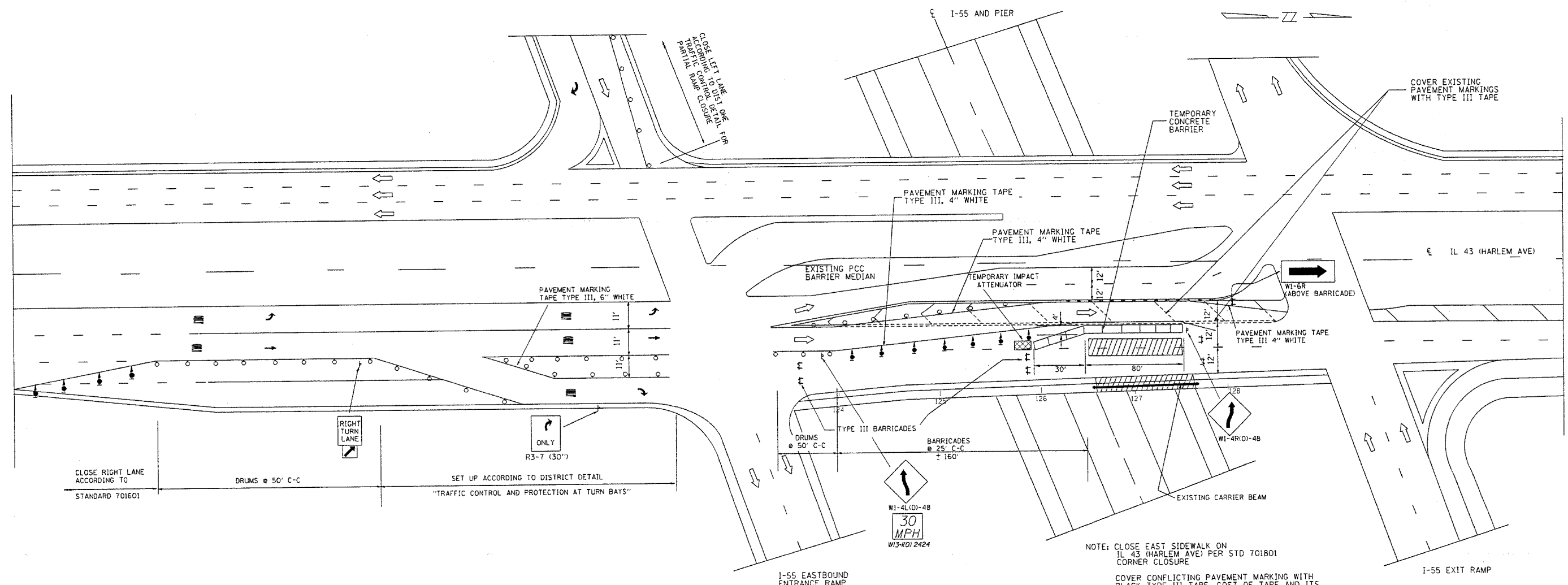


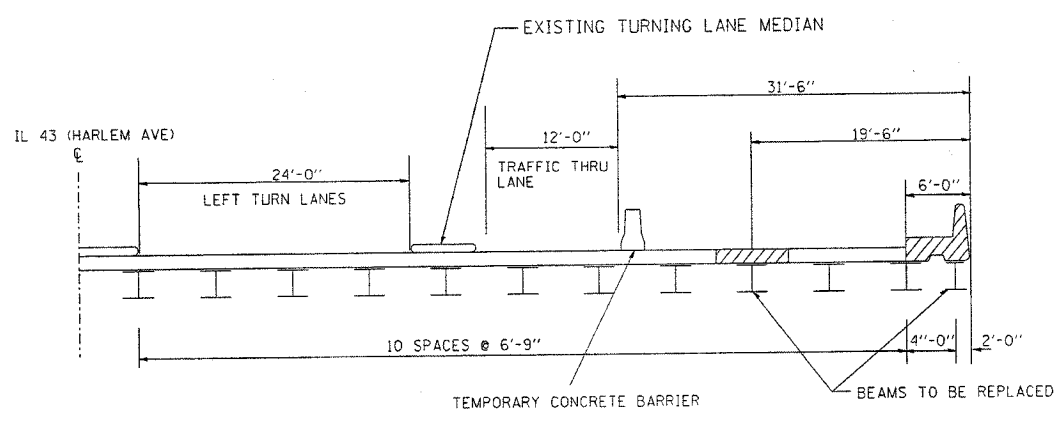
F.A.D. RTE.	SECTION	COUNTY	TOTAL SHEETS	SHEET NO.
34B	0708.2A-1-2	COOK	14	9
STA. _____		TO STA. _____		
FED. ROAD DIST. NO. _____		ILLINOIS FED. AID PROJECT		



NOTE: CLOSE EAST SIDEWALK ON IL 43 (HARLEM AVE) PER STD 701801 CORNER CLOSURE
 COVER CONFLICTING PAVEMENT MARKING WITH BLACK TYPE III TAPE, COST OF TAPE AND ITS REMOVAL IS INCLUDE IN THE COST OF "TC&P 701601"
 COST OF TRAFFIC CONTROL ITEMS SHOWN SHALL BE INCLUDED IN THE COST OF "TC&P 701601"

LEGEND

- TEMPORARY IMPACT ATTENUATOR
- TRAFFIC DIRECTION
- TYPE III BARRICADE WITH FLASHING LIGHTS
- WORK AREA
- SIGN OR SIGN W/ STEADY BURN LIGHT AS SHOWN
- DRUMS W/ STEADY BURN MONO DIRECTIONAL LIGHT
- TEMPORARY CONCRETE BARRIER
- DIRECTION INDICATOR BARRICADE WITH STEADY BURN MONO DIRECTIONAL LIGHTS



REVISIONS	
NAME	DATE

ILLINOIS DEPARTMENT OF TRANSPORTATION
 TRAFFIC CONTROL PLAN
 IL 43 (HARLEM AVE.)
 OVER I-55
 SCALE: VERT. _____
 DATE _____ HORIZ. _____
 DRAWN BY _____
 CHECKED BY _____

PLOT DATE = 10/27/2006
 FILE NAME = c:\p\projects\m43680\as\m43680.dwg
 PLOT SCALE = 1/8"=1'-0"
 USER = mdy