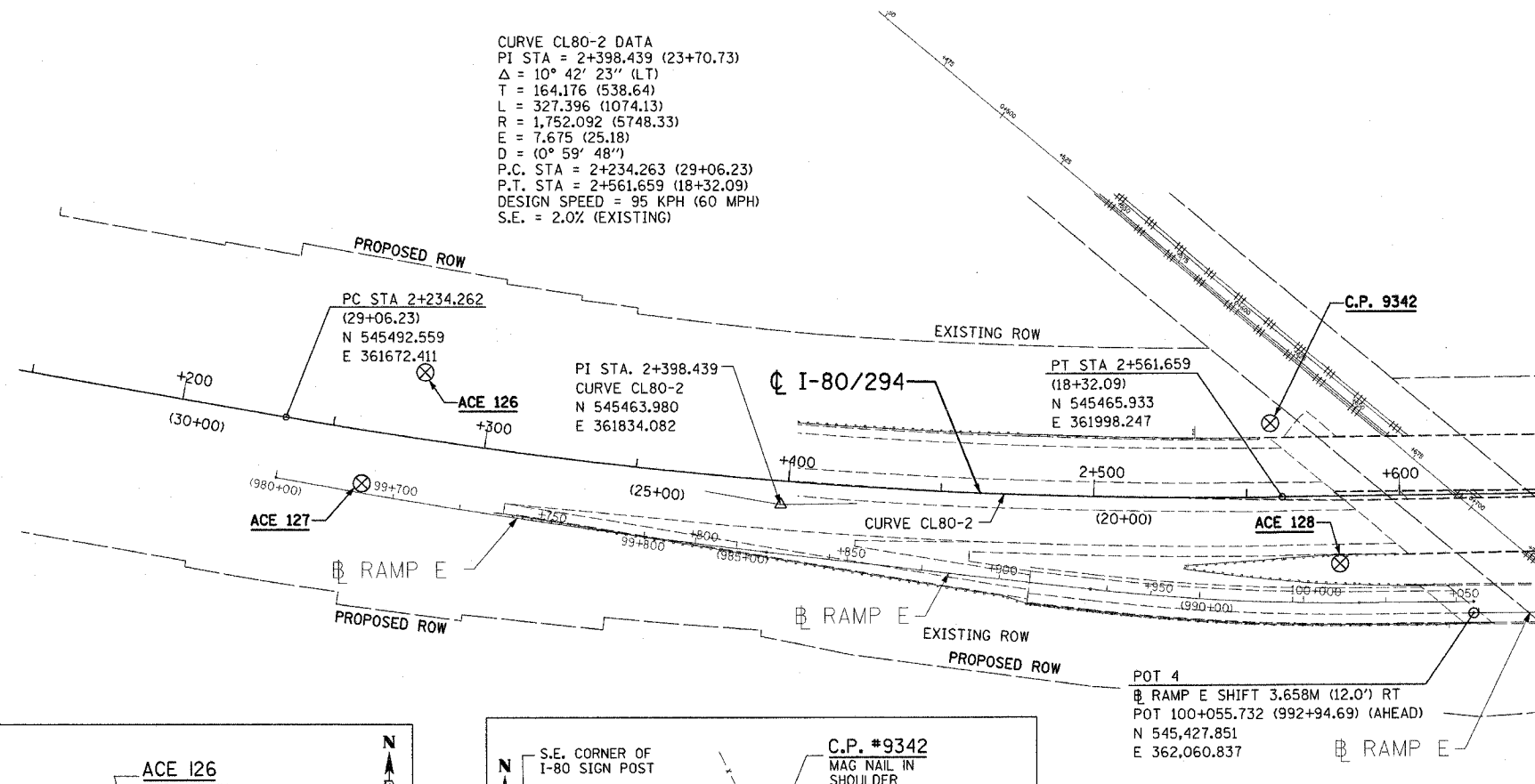
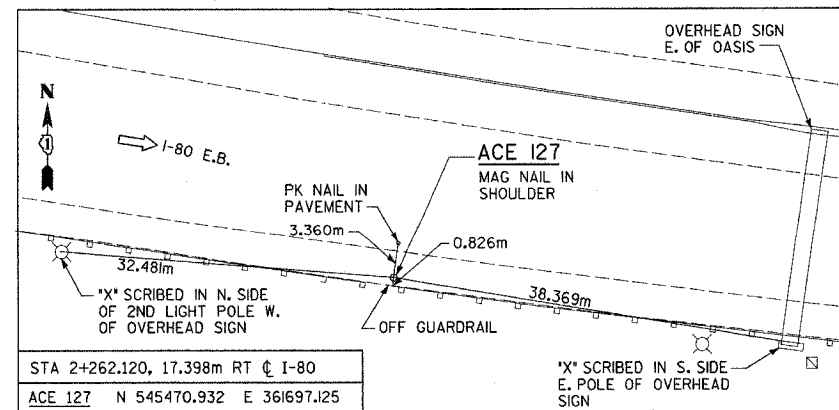
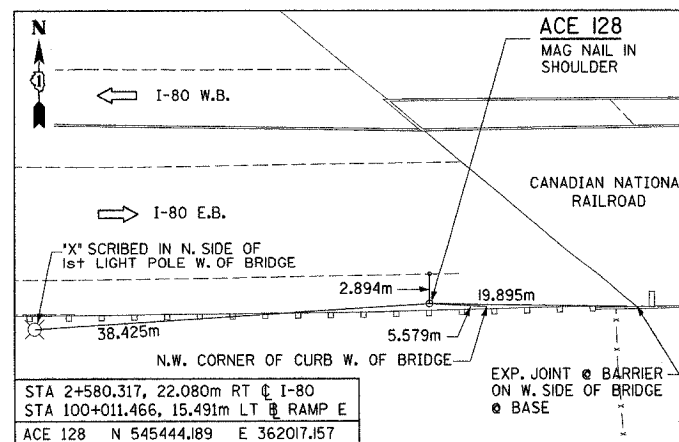
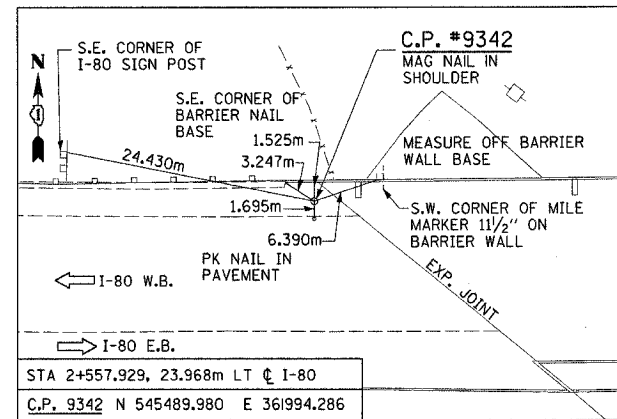
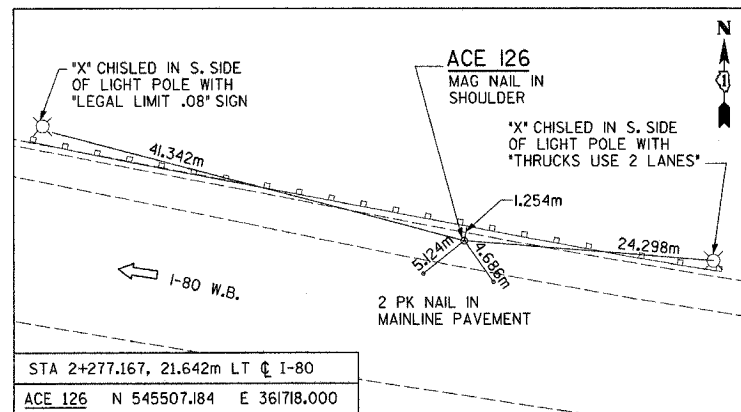


F.A.I. RTE.	SECTION	COUNTY	TOTAL SHEETS	SHEET NO.
80/94	*	COOK	231	26
STA.		TO STA.		
FED. ROAD DIST. NO. 1		ILLINOIS FED. AID PROJECT		
*10203.1 & 03041 R-6		CONTRACT # 62105		

CURVE CL80-2 DATA  
 PI STA = 2+398.439 (23+70.73)  
 $\Delta = 10^{\circ} 42' 23''$  (LT)  
 T = 164.176 (538.64)  
 L = 327.396 (1074.13)  
 R = 1,752.092 (5748.33)  
 E = 7.675 (25.18)  
 D = (0° 59' 48")  
 P.C. STA = 2+234.263 (29+06.23)  
 P.T. STA = 2+561.659 (18+32.09)  
 DESIGN SPEED = 95 KPH (60 MPH)  
 S.E. = 2.0% (EXISTING)



SEE SHEET  
TB-5 MATCH LINE  
STA. 2+650



NOTES:

- FOR BENCHMARKS SEE DRAWING TB-7
- MONUMENTS, BENCHMARKS AND TIE POINTS MAY HAVE BEEN REMOVED AND RELOCATED UNDER PREVIOUS CONTRACTS. COORDINATE MONUMENTS AND TIE POINTS WITH RESIDENT ENGINEER.

REVISIONS	
NAME	DATE

ILLINOIS DEPARTMENT OF TRANSPORTATION  
 F.A.I. ROUTE 80/94 (INTERSTATE 80/294)

ALIGNMENT, TIES,  
 AND BENCHMARKS

SCALE: 1:1000  
 DATE: JULY 18, 2005

DRAWN BY: CTT  
 CHECKED BY: RCH

**McDonough Associates Inc.**  
 Engineers / Architects

TB-4