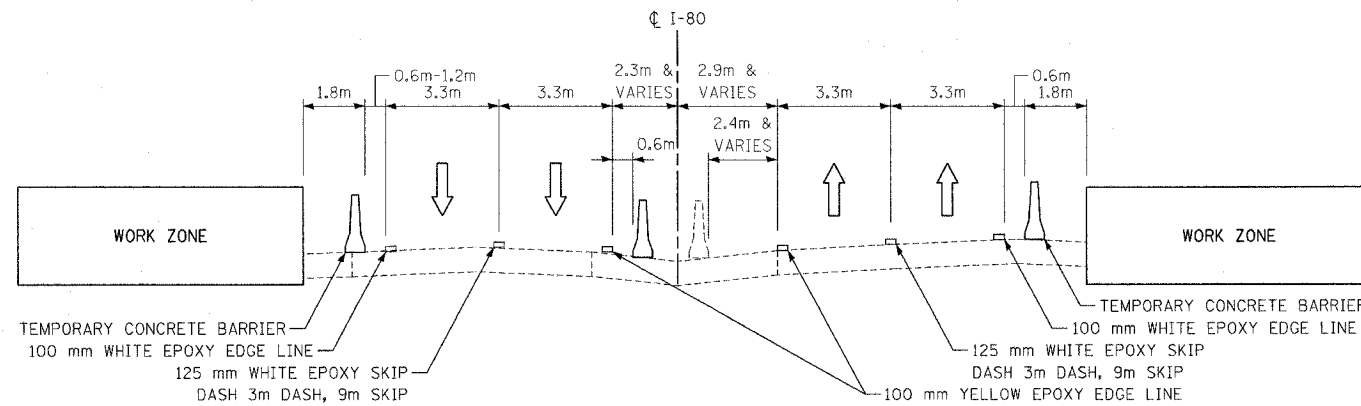
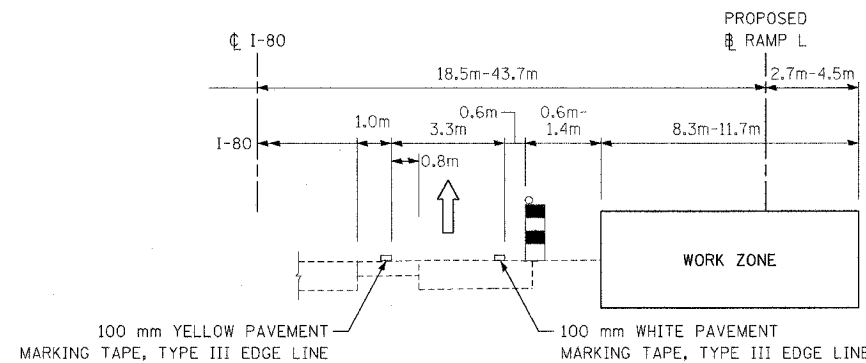


F.A.I. RTE.	SECTION	COUNTY	TOTAL SHEETS	SHEET NO.
80/94	*	COOK	231	31
STA.		TO STA.		
FED. ROAD DIST. NO. 1		ILLINOIS	FED. AID PROJECT	
*(0203.1 & 0304) R-6		CONTRACT # 62105		



STAGE 1 MAINTENANCE OF TRAFFIC TYPICAL SECTION - INTERSTATE 80
 STA. 2+967.7 TO STA. 3+550.0 ϕ I-80 (EB)
 STA. 2+967.7 TO STA. 3+550.0 ϕ I-80 (WB)



STAGE 1 MAINTENANCE OF TRAFFIC TYPICAL SECTION - RAMP L
 STA. 3+303.0 ϕ I-80 = STA. 160+057.0 ϕ RAMP L
 STA. 160+057.0 TO STA. 160+325.3 ϕ RAMP L

RECOMMENDED STAGING SEQUENCE

TRAFFIC LOCATION

STAGE 1:
 I-80/94 WB EXISTING I-80/94 WB (STA. 4+105.0 TO STA. 4+500.0 ϕ I-80)
 I-80 WB TEMPORARY RAMP N TO EXISTING I-80 WB (STA. 2+967.7 TO STA. 4+105.0 ϕ I-80 = STA. 31+503.0 ϕ I-94)
 I-94 WB EXISTING I-94 WB
 I-80 EB EXISTING I-80 EB
 I-94 EB EXISTING I-94 EB
 RAMP H EXISTING RAMP H
 RAMP L EXISTING RAMP L

STAGE 1A:
 I-80/94 WB EXISTING I-80/94 WB (STA. 4+098.0 TO STA. 4+500.0 ϕ I-80)
 I-80 WB TEMPORARY RAMP N TO EXISTING I-80 WB (STA. 2+967.7 TO STA. 4+105.0 ϕ I-80 = STA. 31+503.0 ϕ I-94)
 I-94 WB EXISTING I-94 WB
 I-80 EB EXISTING I-80 EB
 I-94 EB EXISTING I-94 EB
 RAMP H PROPOSED RAMP H (STA. 130+750.0 TO STA. 131+100.0 = STA. 3+136.4 TO STA. 2+975.0 ϕ I-80)
 RAMP L PROPOSED RAMP L

STAGE 2:
 I-80/94 WB EXISTING I-94 WB (STA. 31+503.0 TO STA. 31+897.5 ϕ I-94 WB = STA. 4+500.0 ϕ I-80)
 I-80 WB RAMP N TO PROPOSED I-80 WB (STA. 3+547.0 TO STA. 4+105.0 ϕ I-80 = 31+503.0 ϕ I-94)
 I-94 WB EXISTING I-94 WB
 I-80 EB PROPOSED I-80 EB (STA. 2+967.7 TO STA. 4+500.0 ϕ I-80)
 I-94 EB EXISTING I-94 EB
 RAMP H PROPOSED RAMP H TO PROPOSED I-80 WB
 RAMP L PROPOSED RAMP L

M.O.T. GENERAL NOTES

- ALL WORK INCLUDING SHOULDER REMOVAL, EXCAVATING GRADING AND CONSTRUCTING TEMPORARY PAVEMENT SHALL BE COMPLETED USING HIGHWAY STANDARDS 701400, 701401, AND WITHIN THE ALLOWABLE LANE CLOSURE HOURS AS MENTIONED IN THE SPECIAL PROVISIONS FOR KEEPING THE EXPRESSWAY OPEN TO TRAFFIC.
- THE CONTRACTOR SHALL CONSTRUCT TEMPORARY PAVEMENT AS SPECIFIED IN THE SPECIAL PROVISIONS AND AS DIRECTED AND TO THE SATISFACTION OF THE ENGINEER. THE CONTRACTOR SHALL MAINTAIN THE TEMPORARY PAVEMENT FOR THE DURATION OF THE CONTRACT. SEE SPECIAL PROVISION FOR MAINTENANCE OF ROADWAYS.
- GUARDRAIL WILL BE IN PLACE BEFORE TRAFFIC IS PLACED ADJACENT ANY ROADSIDE OBSTACLES.
- SIGN TEXT AND COLOR SHALL BE PER MUTCD UNLESS OTHERWISE SPECIFIED.
- EXISTING PAVEMENT MARKINGS THAT CONFLICT WITH TEMPORARY MARKINGS SHALL BE REMOVED AND PAID FOR AT THE CONTRACT UNIT PRICE PER SQUARE METER FOR "WORK ZONE PAVEMENT MARKING REMOVAL" FOR TEMPORARY PAVEMENT MARKINGS AND "PAVEMENT MARKING REMOVAL" FOR PERMANENT PAVEMENT MARKINGS. IN ADDITION, THE CRYSTALS IN THE EXISTING RAISED REFLECTIVE MARKERS SHALL BE REMOVED AND PAID FOR AT THE CONTRACT UNIT PRICE EACH FOR "RAISED REFLECTIVE PAVEMENT MARKER REMOVAL."
- THE BARRICADES AND SIGNS NOTED TO REMAIN SHALL BECOME THE PROPERTY OF THE DEPARTMENT ON THE DATE THAT THE ADJACENT LANE IS PERMANENTLY OPENED TO TRAFFIC AND AS ACCEPTED BY THE ENGINEER. THIS WORK WILL NOT BE PAID FOR SEPARATELY, BUT SHALL BE INCLUDED FOR PAYMENT AS PART OF "TRAFFIC CONTROL AND PROTECTION (EXPRESSWAYS)." ALL BARRICADES AND TEMPORARY GROUND MOUNT SIGNS ARE TO BE REMOVED FROM THE JOBSITE AT THE END OF THE CONTRACT.
- STATIC SIGNS ARE REQUIRED AS 2 WEEK NOTICE FOR THE FOLLOWING LOCATIONS. WHERE A RAMP IS CLOSED FOR MORE THAN 1 DAY, A ROAD IS CLOSED FOR MORE THAN 1 DAY, OR A LANE IS CLOSED FOR MORE THAN 1 DAY (SUCH AS FOR BRIDGE RECONSTRUCTIONS OR OTHER WORK WHERE TEMPORARY CONCRETE BARRIER IS USED).

MT-1

REVISIONS		ILLINOIS DEPARTMENT OF TRANSPORTATION F.A.I. ROUTE 80/94 (INTERSTATE 80/294)
NAME	DATE	
		MAINTENANCE OF TRAFFIC TYPICAL SECTIONS DATE: JULY 18, 2005 DRAWN BY: AAS CHECKED BY: RCH McDonough Associates Inc. Engineers / Architects