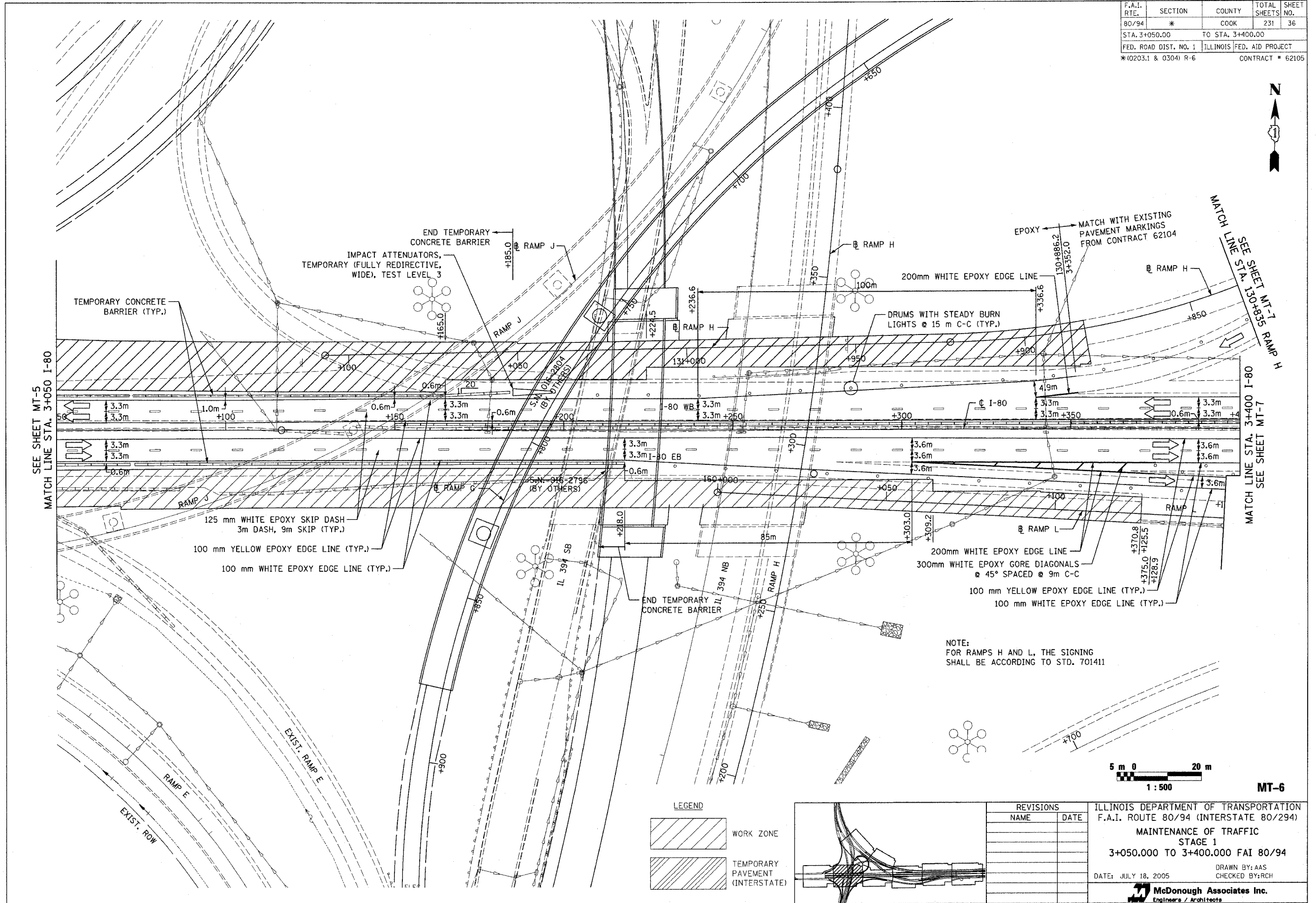


F.A.I. RTE.	SECTION	COUNTY	TOTAL SHEETS	SHEET NO.
80/94	*	COOK	231	36
STA. 3+050.00		TO STA. 3+400.00		
FED. ROAD DIST. NO. 1		ILLINOIS FED. AID PROJECT		
*(0203.1 & 0304) R-6		CONTRACT # 62105		



SEE SHEET MT-5  
MATCH LINE STA. 3+050 I-80

MATCH LINE STA. 3+400 I-80  
SEE SHEET MT-7

125 mm WHITE EPOXY SKIP DASH  
3m DASH, 9m SKIP (TYP.)  
100 mm YELLOW EPOXY EDGE LINE (TYP.)  
100 mm WHITE EPOXY EDGE LINE (TYP.)

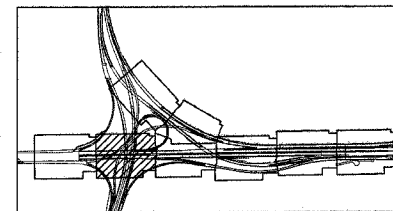
NOTE:  
FOR RAMPS H AND L, THE SIGNING  
SHALL BE ACCORDING TO STD. 701411



MT-6

LEGEND

	WORK ZONE
	TEMPORARY PAVEMENT (INTERSTATE)



REVISIONS	
NAME	DATE

ILLINOIS DEPARTMENT OF TRANSPORTATION  
F.A.I. ROUTE 80/94 (INTERSTATE 80/294)  
MAINTENANCE OF TRAFFIC  
STAGE 1  
3+050.000 TO 3+400.000 FAI 80/94  
DATE: JULY 18, 2005  
DRAWN BY: AAS  
CHECKED BY: RCH  
**McDonough Associates Inc.**  
Engineers / Architects