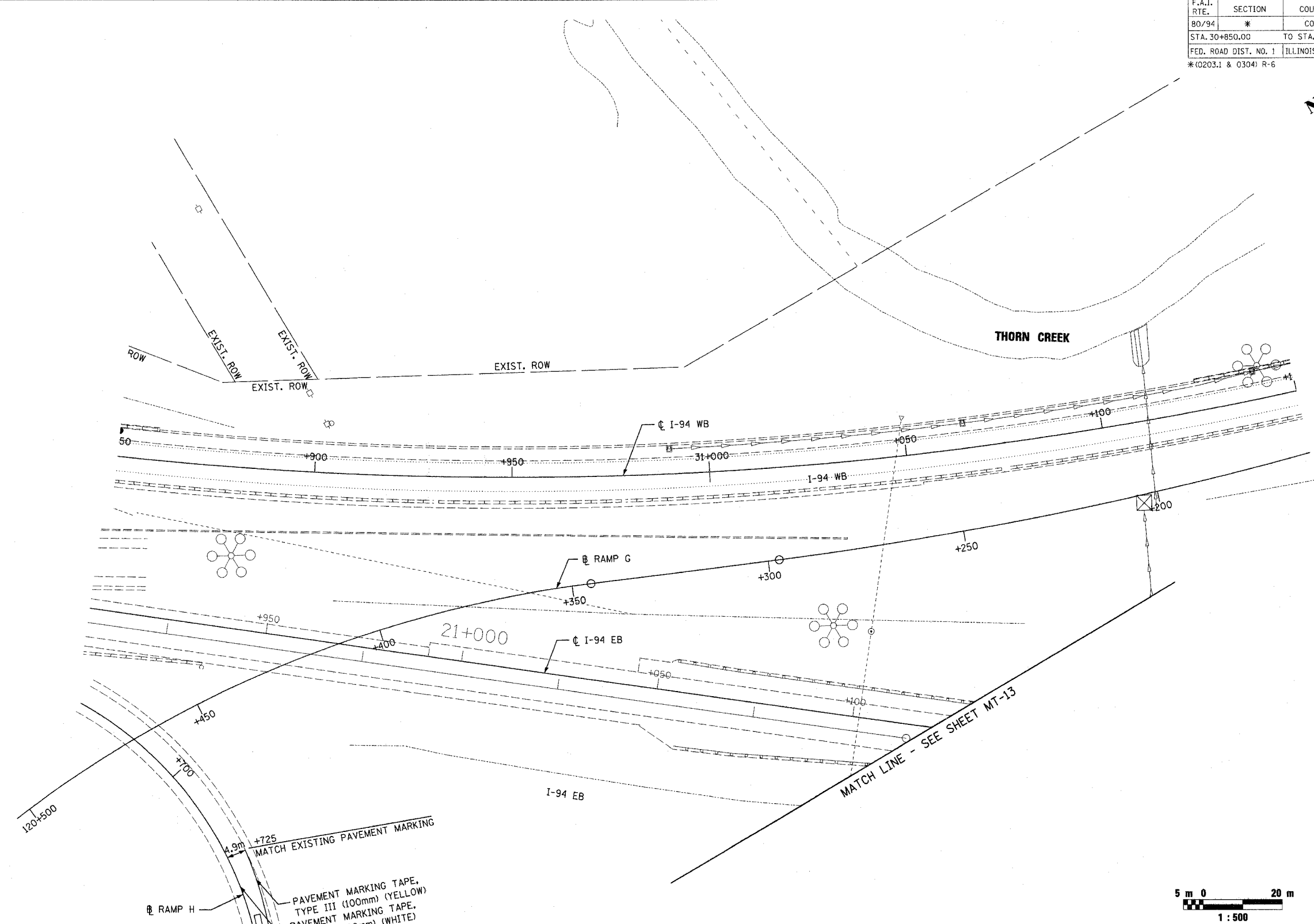
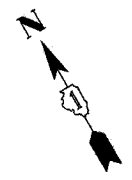


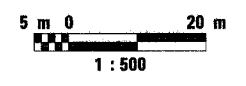
F.A.I. RTE.	SECTION	COUNTY	TOTAL SHEETS	SHEET NO.
80/94	*	COOK	231	44
STA. 30+850.00		TO STA. 31+150.00		
FED. ROAD DIST. NO. 1		ILLINOIS FED. AID PROJECT		
*(0203.1 & 0304) R-6		CONTRACT # 62105		



SEE SHEET MT-13
MATCH LINE STA. 130+750 RAMP H

PAVEMENT MARKING TAPE,
TYPE III (100mm) (YELLOW)
PAVEMENT MARKING TAPE,
TYPE III (100mm) (WHITE)

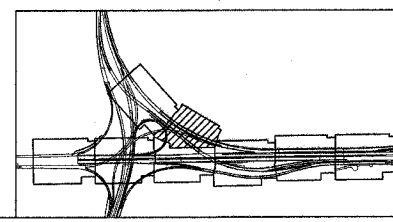
4.9m
MATCH EXISTING PAVEMENT MARKING



MT-14

LEGEND

	WORK ZONE
	TEMPORARY PAVEMENT (INTERSTATE)



REVISIONS	
NAME	DATE

ILLINOIS DEPARTMENT OF TRANSPORTATION
F.A.I. ROUTE 80/94 (INTERSTATE 80/294)
MAINTENANCE OF TRAFFIC
STAGE 1A
30+850.000 TO 31+150.000 FAI 94 (WB)

DATE: JULY 18, 2005

DRAWN BY: TRK/AAS
CHECKED BY: RCH

McDonough Associates Inc.
Engineers / Architects