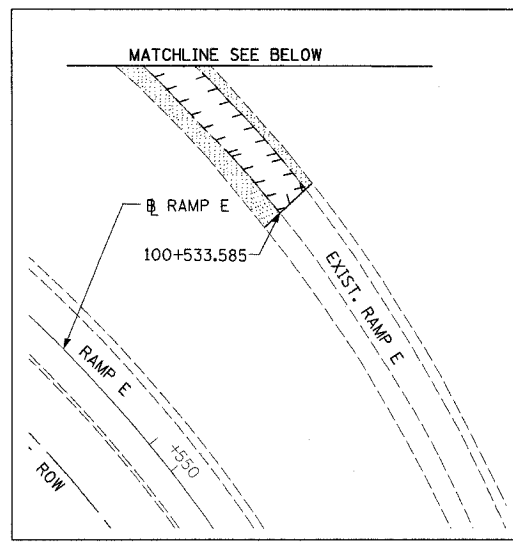
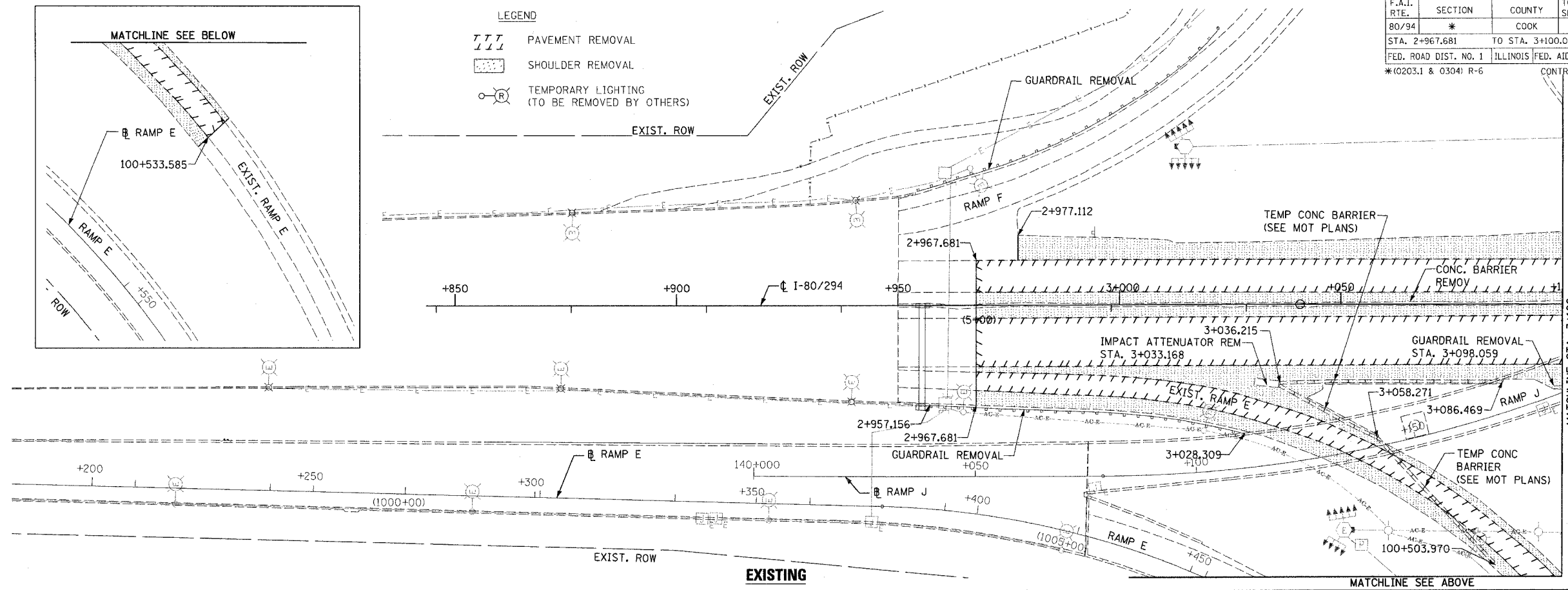


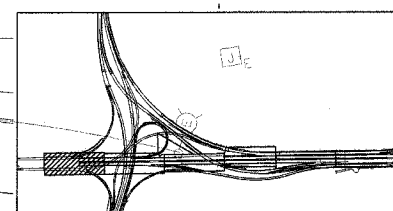
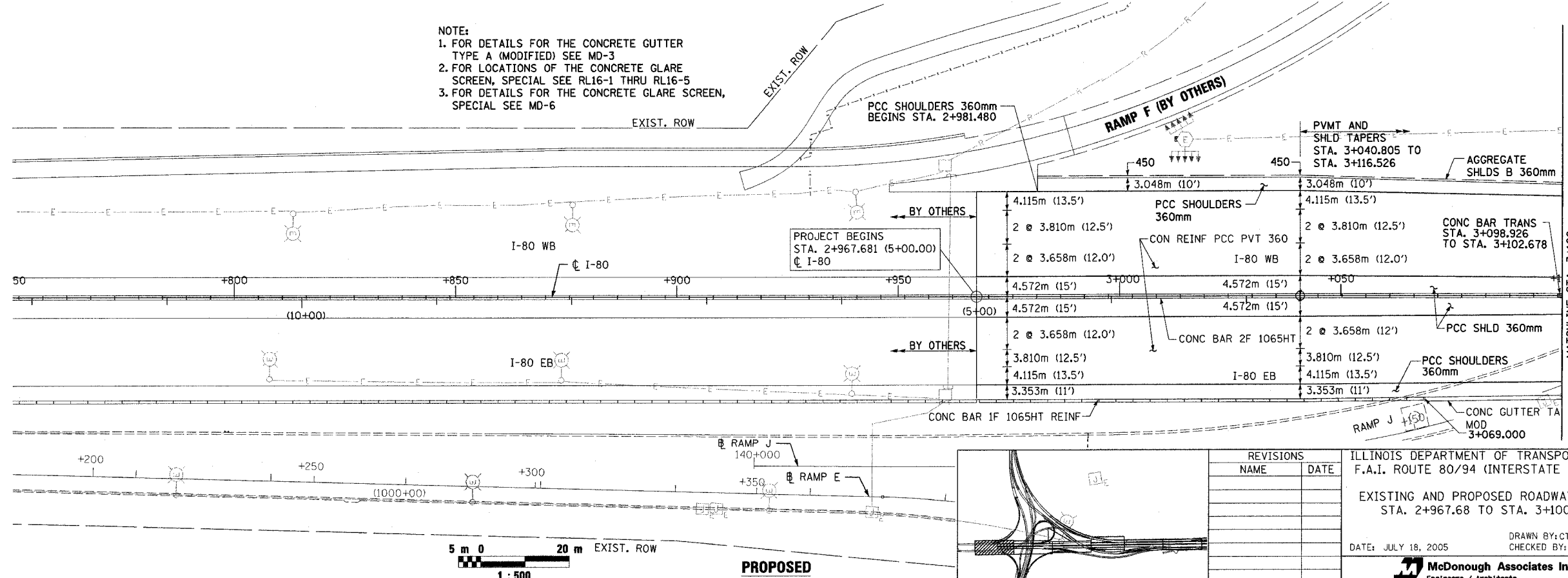
|                       |         |                           |              |           |
|-----------------------|---------|---------------------------|--------------|-----------|
| F.A.I. RTE.           | SECTION | COUNTY                    | TOTAL SHEETS | SHEET NO. |
| 80/94                 | *       | COOK                      | 231          | 62        |
| STA. 2+967.681        |         | TO STA. 3+100.00          |              |           |
| FED. ROAD DIST. NO. 1 |         | ILLINOIS FED. AID PROJECT |              |           |
| *(0203.1 & 0304) R-6  |         | CONTRACT # 62105          |              |           |



- LEGEND
- PAVEMENT REMOVAL
  - SHOULDER REMOVAL
  - ⊙(R) TEMPORARY LIGHTING (TO BE REMOVED BY OTHERS)

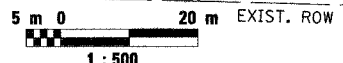


- NOTE:
1. FOR DETAILS FOR THE CONCRETE GUTTER TYPE A (MODIFIED) SEE MD-3
  2. FOR LOCATIONS OF THE CONCRETE GLARE SCREEN, SPECIAL SEE RL16-1 THRU RL16-5
  3. FOR DETAILS FOR THE CONCRETE GLARE SCREEN, SPECIAL SEE MD-6



| REVISIONS |      |
|-----------|------|
| NAME      | DATE |
|           |      |
|           |      |
|           |      |
|           |      |

ILLINOIS DEPARTMENT OF TRANSPORTATION  
 F.A.I. ROUTE 80/94 (INTERSTATE 80/294)  
 EXISTING AND PROPOSED ROADWAY PLAN  
 STA. 2+967.68 TO STA. 3+100.00  
 DATE: JULY 18, 2005  
 DRAWN BY: CTT  
 CHECKED BY: RCH  
**McDonough Associates Inc.**  
 Engineers / Architects



MATCHLINE STA. 3+100  
SEE SHEET PF-2



MATCHLINE STA. 3+100  
SEE SHEET PF-2