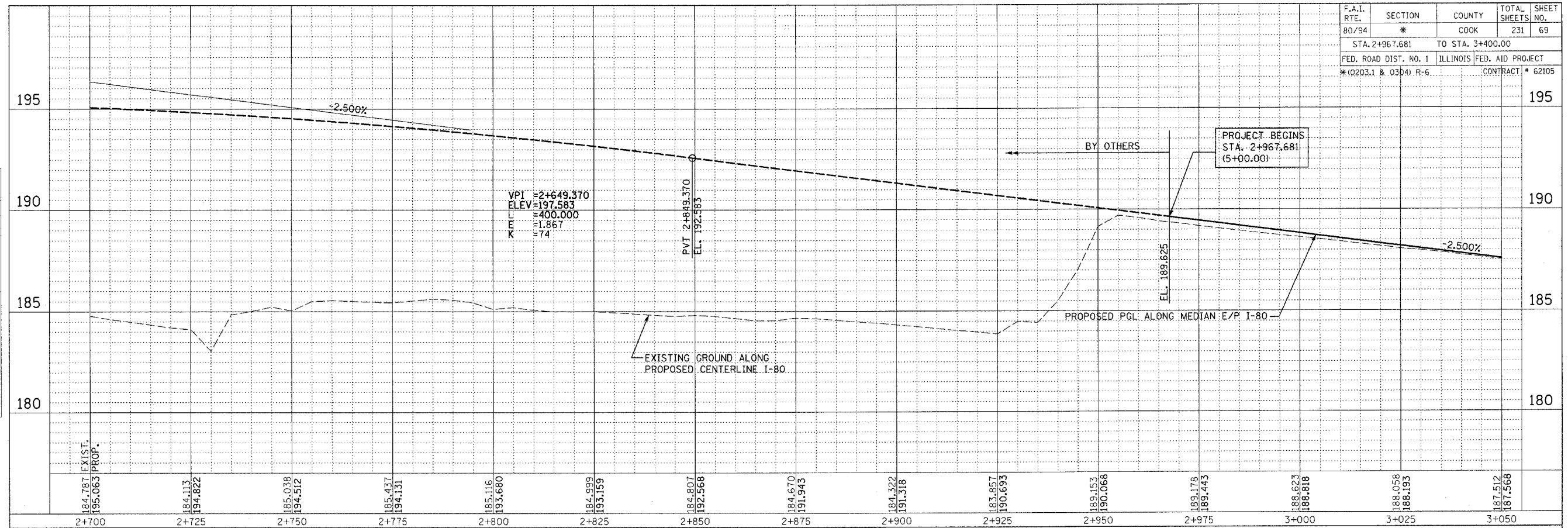
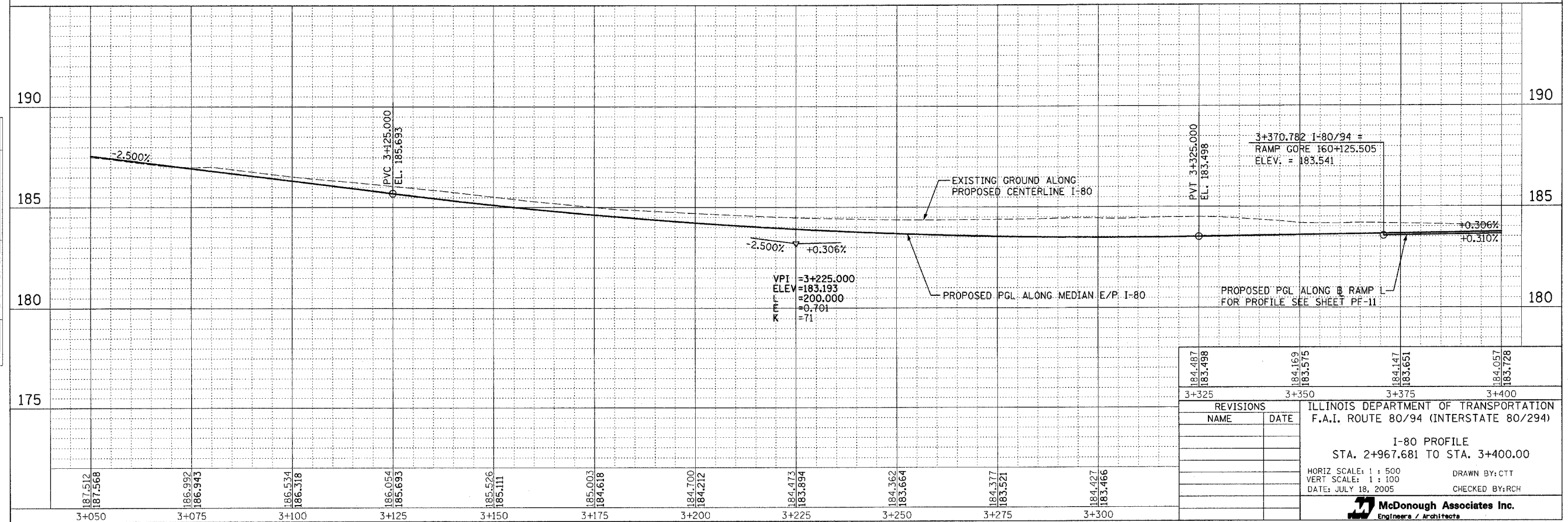


F.A.I. RTE.	SECTION	COUNTY	TOTAL SHEETS	SHEET NO.
80/94	*	COOK	231	69
STA. 2+967.681		TO STA. 3+400.00		
FED. ROAD DIST. NO. 1		ILLINOIS FED. AID PROJECT		
*(0203.1 & 0304) R-6		CONTRACT # 62105		

FINAL SURVEYED SURVEY PLOTTED NOTE BOOK TEMPLATE NO.	DATE
BY	
AREAS CHECKED	



ORIGINAL SURVEYED SURVEY PLOTTED NOTE BOOK TEMPLATE NO.	DATE
BY	
AREAS CHECKED	



184.487	184.169	184.147	184.057
183.498	183.575	183.651	183.728
3+325	3+350	3+375	3+400
REVISIONS			
NAME	DATE		
ILLINOIS DEPARTMENT OF TRANSPORTATION F.A.I. ROUTE 80/94 (INTERSTATE 80/294)			
I-80 PROFILE STA. 2+967.681 TO STA. 3+400.00			
HORIZ SCALE: 1 : 500		DRAWN BY: CTT	
VERT SCALE: 1 : 100		CHECKED BY: RCH	
DATE: JULY 18, 2005			
McDonough Associates Inc. Engineers / Architects			