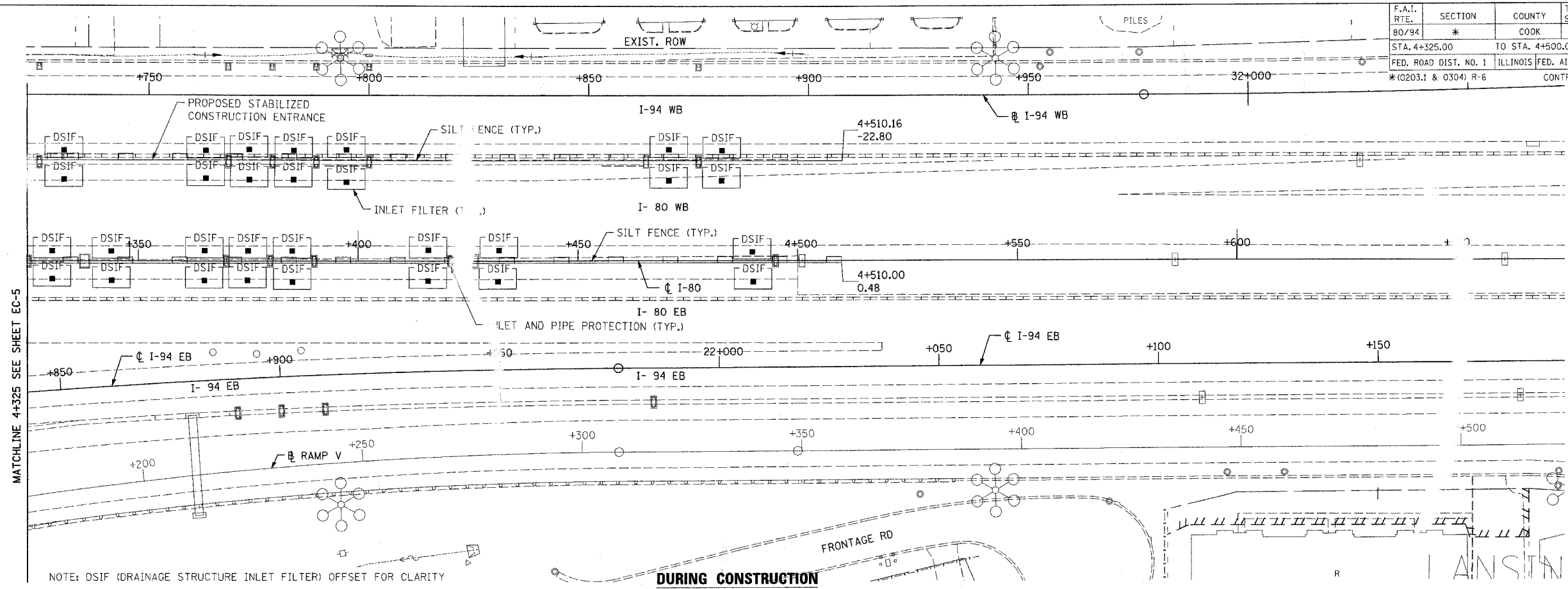
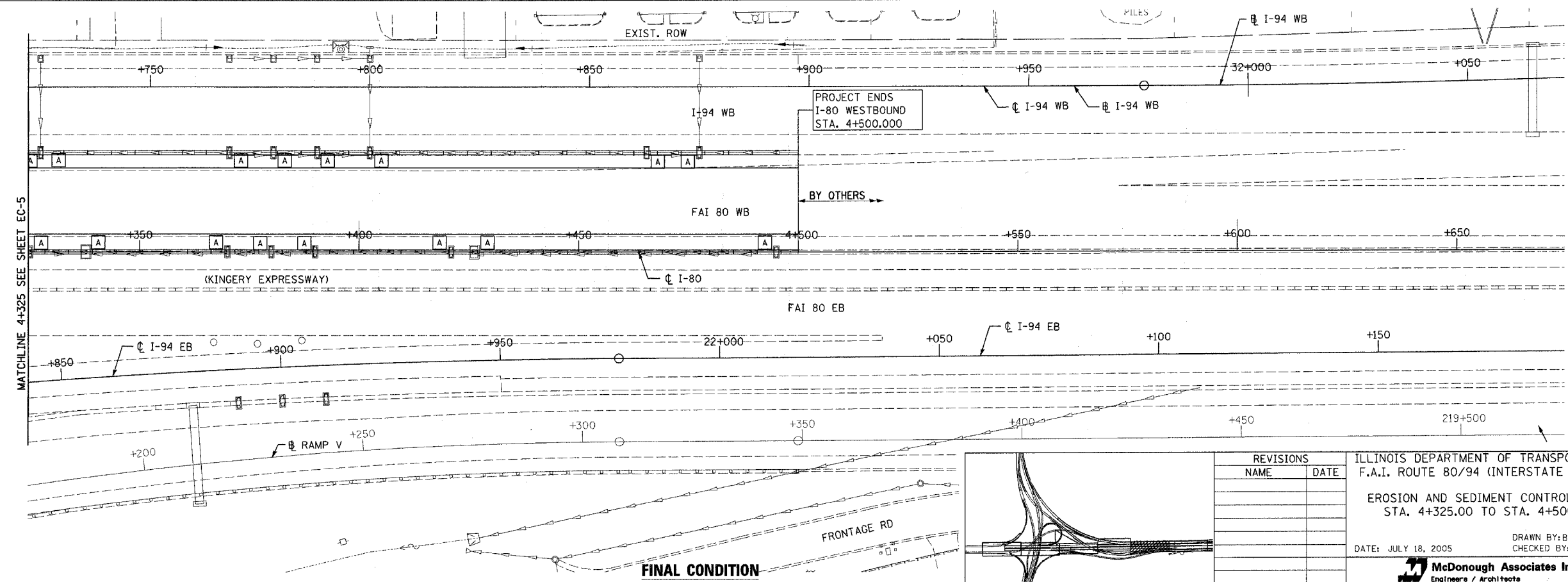


|                       |              |                           |                     |                  |
|-----------------------|--------------|---------------------------|---------------------|------------------|
| F.A.I. RTE.<br>80/94  | SECTION<br>* | COUNTY<br>COOK            | TOTAL SHEETS<br>231 | SHEET NO.<br>141 |
| STA. 4+325.00         |              | TO STA. 4+500.00          |                     |                  |
| FED. ROAD DIST. NO. 1 |              | ILLINOIS FED. AID PROJECT |                     |                  |
| *(0203.1 & 0304) R-6  |              | CONTRACT # 62105          |                     |                  |

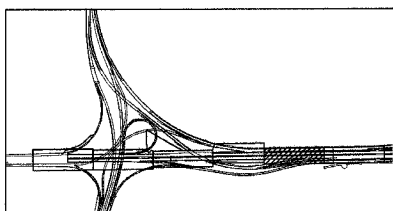


NOTE: DSIF (DRAINAGE STRUCTURE INLET FILTER) OFFSET FOR CLARITY

**DURING CONSTRUCTION**



**FINAL CONDITION**



| REVISIONS |      |
|-----------|------|
| NAME      | DATE |
|           |      |
|           |      |
|           |      |
|           |      |
|           |      |

ILLINOIS DEPARTMENT OF TRANSPORTATION  
F.A.I. ROUTE 80/94 (INTERSTATE 80/294)

EROSION AND SEDIMENT CONTROL PLAN  
STA. 4+325.00 TO STA. 4+500.00

DATE: JULY 18, 2005

DRAWN BY: BFH  
CHECKED BY: RCH

**McDonough Associates Inc.**  
Engineers / Architects

MATCHLINE 4+325 SEE SHEET EC-5

MATCHLINE 4+325 SEE SHEET EC-5

