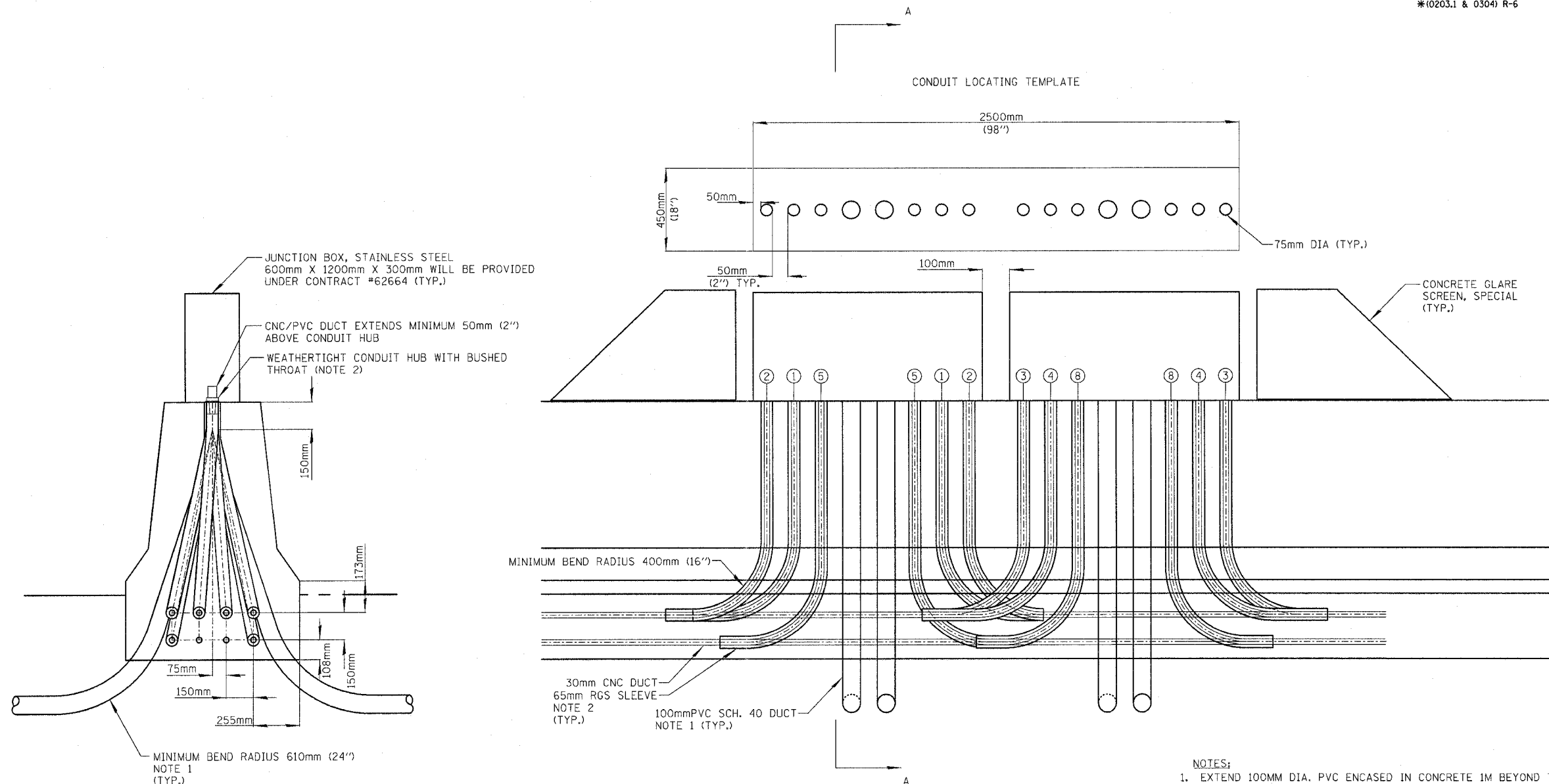
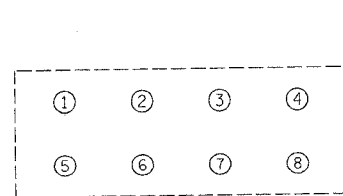


F.A.I. RTE.	SECTION	COUNTY	TOTAL SHEETS	SHEET NO.
80/94	*	COOK	231	156
STA.		TO STA.		
FED. ROAD DIST. NO. 1		ILLINOIS	FED. AID PROJECT	
*(0203.1 & 0304) R-6		CONTRACT # 62105		

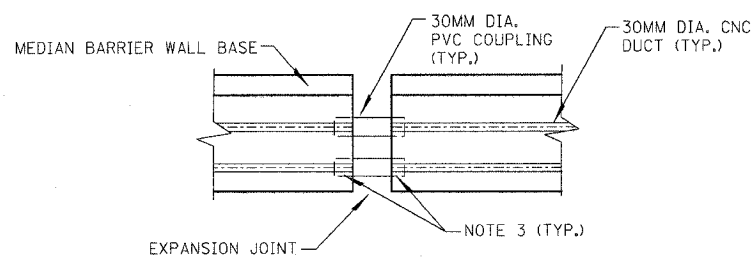


SECTION A-A

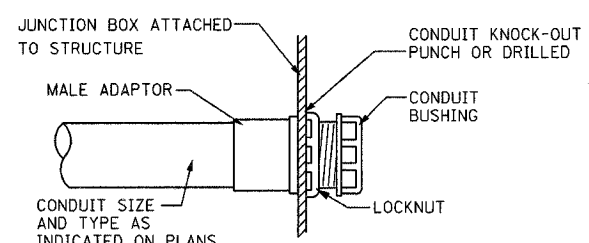
ELEVATION VIEW
LOOKING NORTH OR EAST



DUCT IDENTIFICATION



TYPICAL EXPANSION JOINT COUPLING DETAIL
NOT TO SCALE



CONDUIT BOX ENTRY DETAIL
NOT TO SCALE

- NOTES:
1. EXTEND 100MM DIA. PVC ENCASED IN CONCRETE 1M BEYOND THE MEDIAN BARRIER WALL AND EITHER TRANSITION TO REINFORCED CONCRETE DUCT BANK OR CONNECT TO EXISTING REINFORCED CONCRETE DUCT BANK INSTALLED UNDER A SEPARATE CONTRACT. PAYMENT FOR THE CONCRETE ENCASEMENT SHALL BE INCLUDED IN "CONDUIT EMBEDDED IN STRUCTURE, 100MM DIA. PVC". NO SEPARATE PAYMENT WILL BE MADE.
 2. THE COST OF 65MM RGS CONDUIT INCLUDING INDICATED ELBOWS, METALLIC TO NON-METALLIC COUPLINGS AND FITTING SHALL BE INCLUDED IN THE COST OF "CONDUIT EMBEDDED IN STRUCTURE, 65MM DIA., GALVANIZED STEEL". NO SEPARATE PAYMENT WILL BE MADE.
 3. NON-METALLIC COMPRESSION TYPE CONDUIT COUPLING, 2 PER DUCT. THE COST OF THIS WORK SHALL BE INCLUDED IN THE COST OF RELATED CONDUIT EMBEDDED IN STRUCTURE PAY ITEM.

ED16-1

REVISIONS	
NAME	DATE

ILLINOIS DEPARTMENT OF TRANSPORTATION
F.A.I. ROUTE 80/94 (INTERSTATE 80/294)
**BARRIER WALL CONDUIT
INSTALLATION AT JUNCTION**
SCALE: No scale
DATE: JULY 18, 2005
DRAWN BY: MB
CHECKED BY: KMY
McDonough Associates Inc.
Engineers / Architects