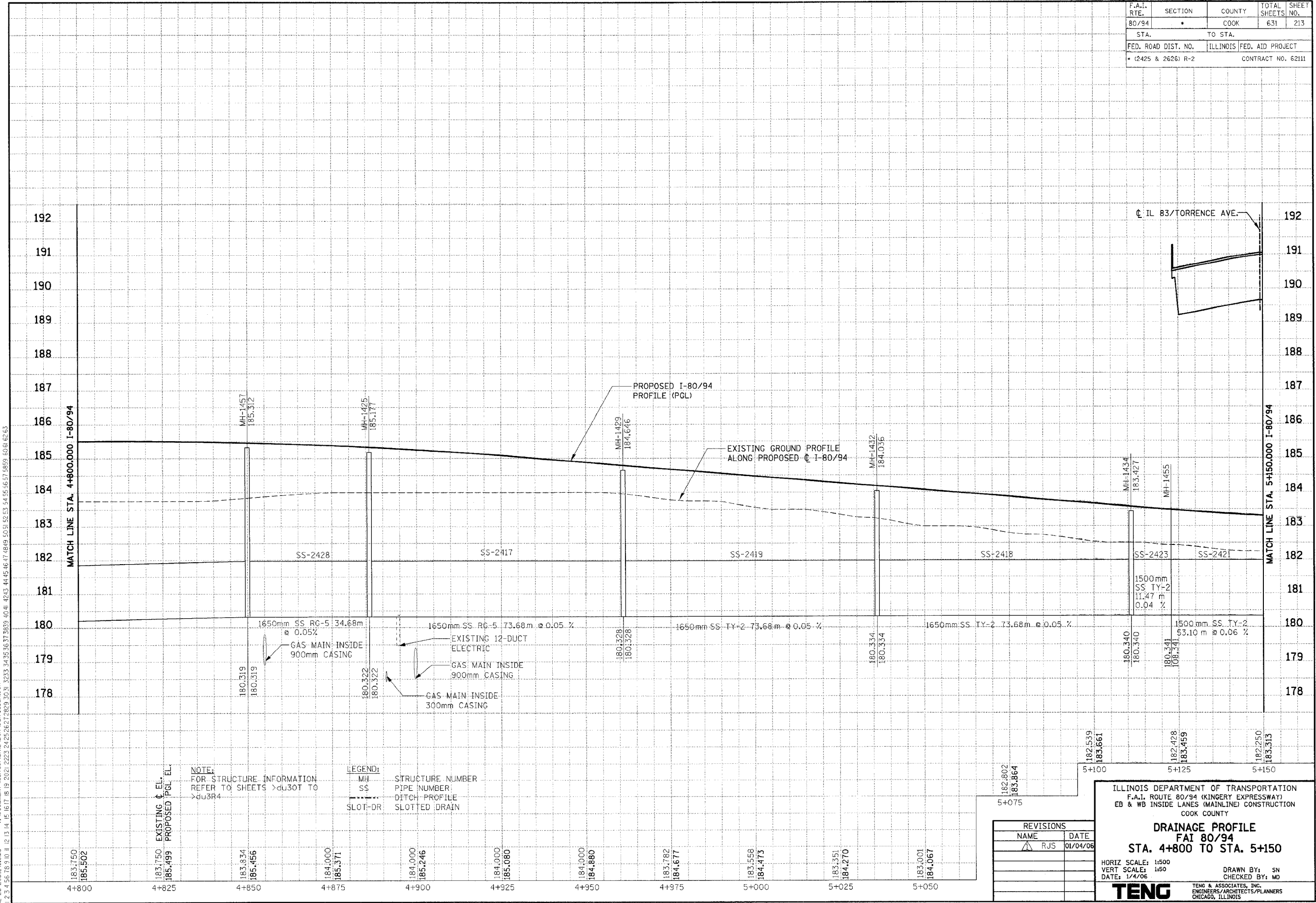


F.A.I. RTE.	SECTION	COUNTY	TOTAL SHEETS	SHEET NO.
80/94	*	COOK	631	213
STA.	TO STA.			
FED. ROAD DIST. NO.	ILLINOIS	FED. AID PROJECT		
* (2425 & 2626) R-2		CONTRACT NO. 62111		

PRELIMINARY SURVEYED SURVEY PLOTTED	BY	DATE
NOTE BOOK TEMPLATE AREAS CHECKED		
NO.		

ORIGINAL SURVEYED SURVEY PLOTTED	BY	DATE
NOTE BOOK TEMPLATE AREAS CHECKED		
NO.		

VARSHINZ  
 1-23-05 18:10:11 12:13:14 15:16:17 18:19 20:21 22:23 24:25 26:27 28:29 30:31 32:33 34:35 36:37 38:39 40:41 42:43 44:45 46:47 48:49 50:51 52:53 54:55 56:57 58:59 60:61 62:63



NOTE:  
 FOR STRUCTURE INFORMATION  
 REFER TO SHEETS >du307 TO >du3R4

LEGEND:  
 MH STRUCTURE NUMBER  
 SS PIPE NUMBER  
 --- DITCH PROFILE  
 - - - SLOTTED DRAIN

REVISIONS	
NAME	DATE
△ RJS	01/04/06

ILLINOIS DEPARTMENT OF TRANSPORTATION  
 F.A.I. ROUTE 80/94 (KINGERY EXPRESSWAY)  
 EB & WB INSIDE LANES (MAINLINE) CONSTRUCTION  
 COOK COUNTY

**DRAINAGE PROFILE**  
 FAI 80/94  
 STA. 4+800 TO STA. 5+150

HORIZ SCALE: 1:500  
 VERT SCALE: 1:50  
 DATE: 1/4/06

DRAWN BY: SN  
 CHECKED BY: MD

**TENG**  
 TENG & ASSOCIATES, INC.  
 ENGINEERS/ARCHITECTS/PLANNERS  
 CHICAGO, ILLINOIS