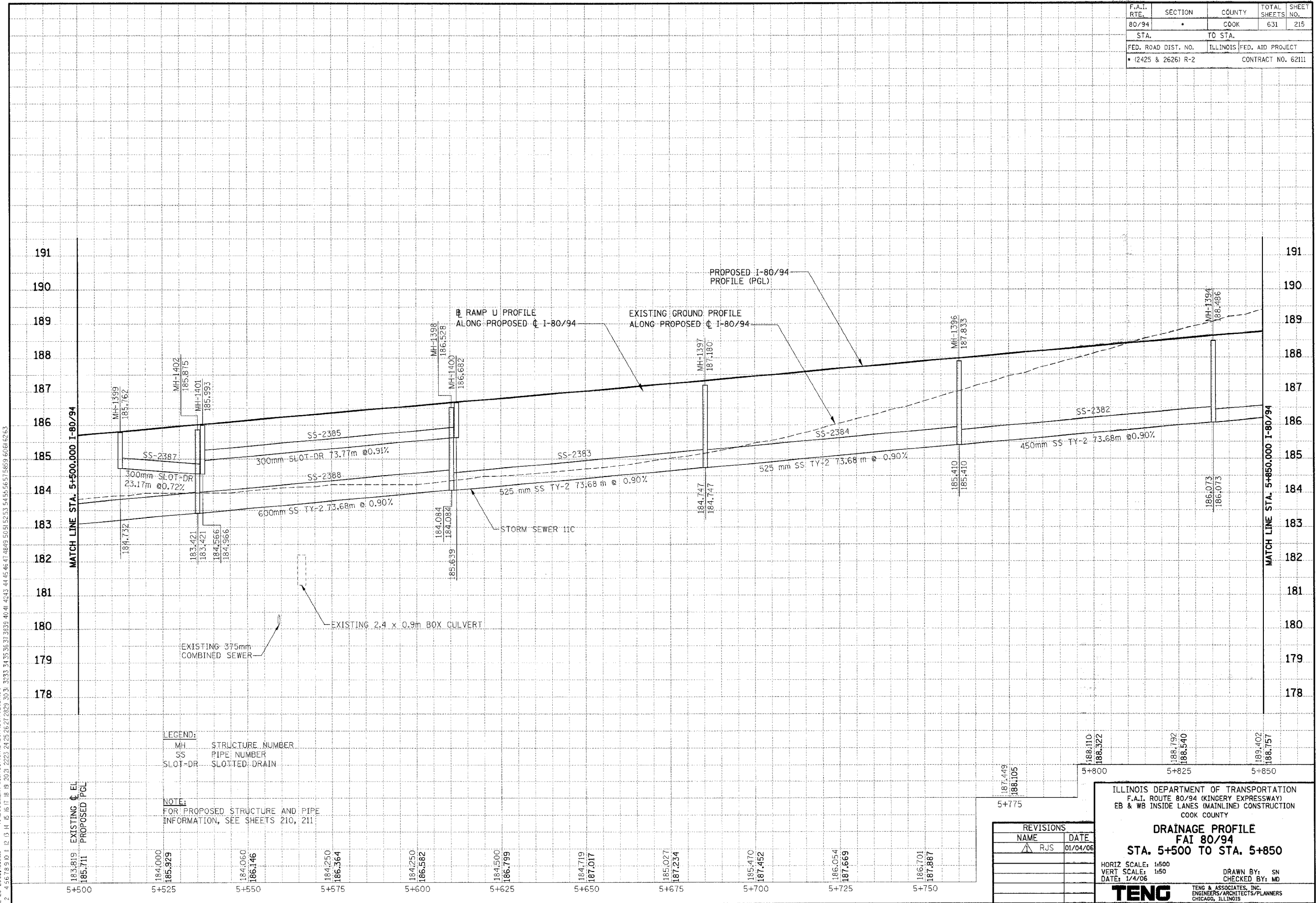


F.A.I. RTE.	SECTION	COUNTY	TOTAL SHEETS	SHEET NO.
80/94		COOK	631	215
STA.	TO STA.			
FED. ROAD DIST. NO.	ILLINOIS FED. AID PROJECT			
(2425 & 2626) R-2			CONTRACT NO. 62111	

PRELIMINARY SURVEYED SURVEY PLOTTED	BY	DATE
NOTE BOOK TEMPLATE AREAS CHECKED		
NO.		

ORIGINAL SURVEYED SURVEY PLOTTED	BY	DATE
NOTE BOOK TEMPLATE AREAS CHECKED		
NO.		

VARSHINAZ
 \P-28-2005-160048 \P-28-2005-160048 \P-28-2005-160048 \P-28-2005-160048 \P-28-2005-160048 \P-28-2005-160048 \P-28-2005-160048 \P-28-2005-160048 \P-28-2005-160048 \P-28-2005-160048
 \P-28-2005-160048 \P-28-2005-160048 \P-28-2005-160048 \P-28-2005-160048 \P-28-2005-160048 \P-28-2005-160048 \P-28-2005-160048 \P-28-2005-160048 \P-28-2005-160048 \P-28-2005-160048



LEGEND:
 MH STRUCTURE NUMBER
 SS PIPE NUMBER
 SLOT-DR SLOTTED DRAIN

NOTE:
 FOR PROPOSED STRUCTURE AND PIPE INFORMATION, SEE SHEETS 210, 211

REVISIONS	
NAME	DATE
RJS	01/04/06

ILLINOIS DEPARTMENT OF TRANSPORTATION
 F.A.I. ROUTE 80/94 (KINGERY EXPRESSWAY)
 EB & WB INSIDE LANES (MAINLINE) CONSTRUCTION
 COOK COUNTY

DRAINAGE PROFILE
FAI 80/94
STA. 5+500 TO STA. 5+850

HORIZ SCALE: 1/500
 VERT SCALE: 1/50
 DATE: 1/4/06

DRAWN BY: SN
 CHECKED BY: MD

TENG
 TENG & ASSOCIATES, INC.
 ENGINEERS/ARCHITECTS/PLANNERS
 CHICAGO, ILLINOIS