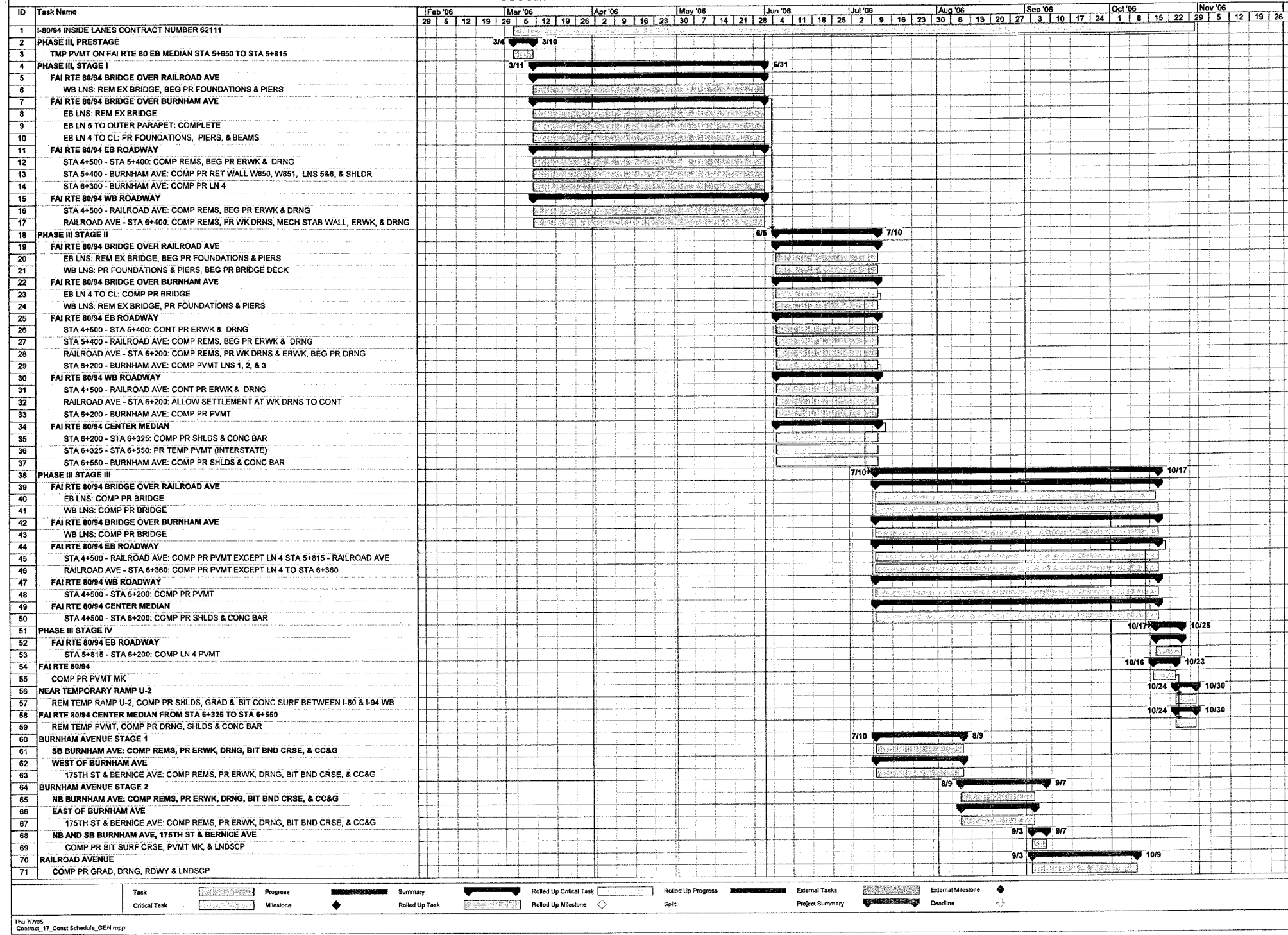


F.A.I. RTE.	SECTION	COUNTY	TOTAL SHEETS	SHEET NO.
80/94	*	COOK	831	12
STA.	TO STA.			
FED. ROAD DIST. NO.	ILLINOIS	FED. AID PROJECT		
* (2425 & 2626) R-2		CONTRACT NO. 62111		

SUGGESTED CONSTRUCTION PROGRESS SCHEDULE



BEG - BEGIN
 BIT - BITUMINOUS
 BND - BINDER
 BAR - BARRIER
 COMP - COMPLETE
 CONC - CONCRETE
 CONT - CONTINUE
 CRSE - COURSE
 CC&G - COMBINED CURB AND GUTTER

DRNG - DRAINAGE
 ERWK - EARTHWORK
 EX - EXISTING
 GRAD - GRADING
 LNS - LANES
 LNDSCP - LANDSCAPING
 MECH - MECHANICALLY
 MK - MARKING
 PCG - PORTLAND CEMENT CONCRETE

PR - PROPOSED
 PVT - PAVEMENT
 REMS - REMOVALS
 RET WALL - RETAINING WALL
 RDWY - ROADWAY
 SHLDS - SHOULDERS
 STA - STATION
 STAB - STABILIZED
 SURF - SURFACE

TEMP - TEMPORARY

NOTE: THE CONSTRUCTION ACTIVITIES THAT DO NOT AFFECT EXPRESSWAY TRAFFIC IN COMPLIANCE WITH SPECIAL PROVISION "WORK RESTRICTIONS", CAN BE PERFORMED PRIOR TO MARCH 4, 2006

REVISIONS	
NAME	DATE

ILLINOIS DEPARTMENT OF TRANSPORTATION
 F.A.I. ROUTE 80/94 (KINGERY EXPRESSWAY)
 EB & WB INSIDE LANES (MAINLINE) CONSTRUCTION
 COOK COUNTY

SUGGESTED CONSTRUCTION PROGRESS SCHEDULE I

SCALE: NONE
 DATE: 7/18/2005

DRAWN BY: MCD
 CHECKED BY: DH

TENG
 TENG & ASSOCIATES, INC.
 ENGINEERS/ARCHITECTS/PLANNERS
 CHICAGO, ILLINOIS

T:\DOCUMENTS\133750\DRAWING\DRAWINGS\10020A.DWG
 7-11-2005, 9:46:09
 1, 2, 3, 4, 5, 6, 7, 8, 9, 10, 11, 12, 13, 14, 15, 16, 17, 18, 19, 20, 21, 22, 23, 24, 25, 26, 27, 28, 29, 30, 31, 32, 33, 34, 35, 36, 37, 38, 39, 40, 41, 42, 43, 44, 45, 46, 47, 48, 49, 50, 51, 52, 53, 54, 55, 56, 57, 58, 59, 60, 61, 62, 63, 64, 65, 66, 67, 68, 69, 70, 71
 STA:MKR
 Contract_17_Const_Schedule_GEN.mpp