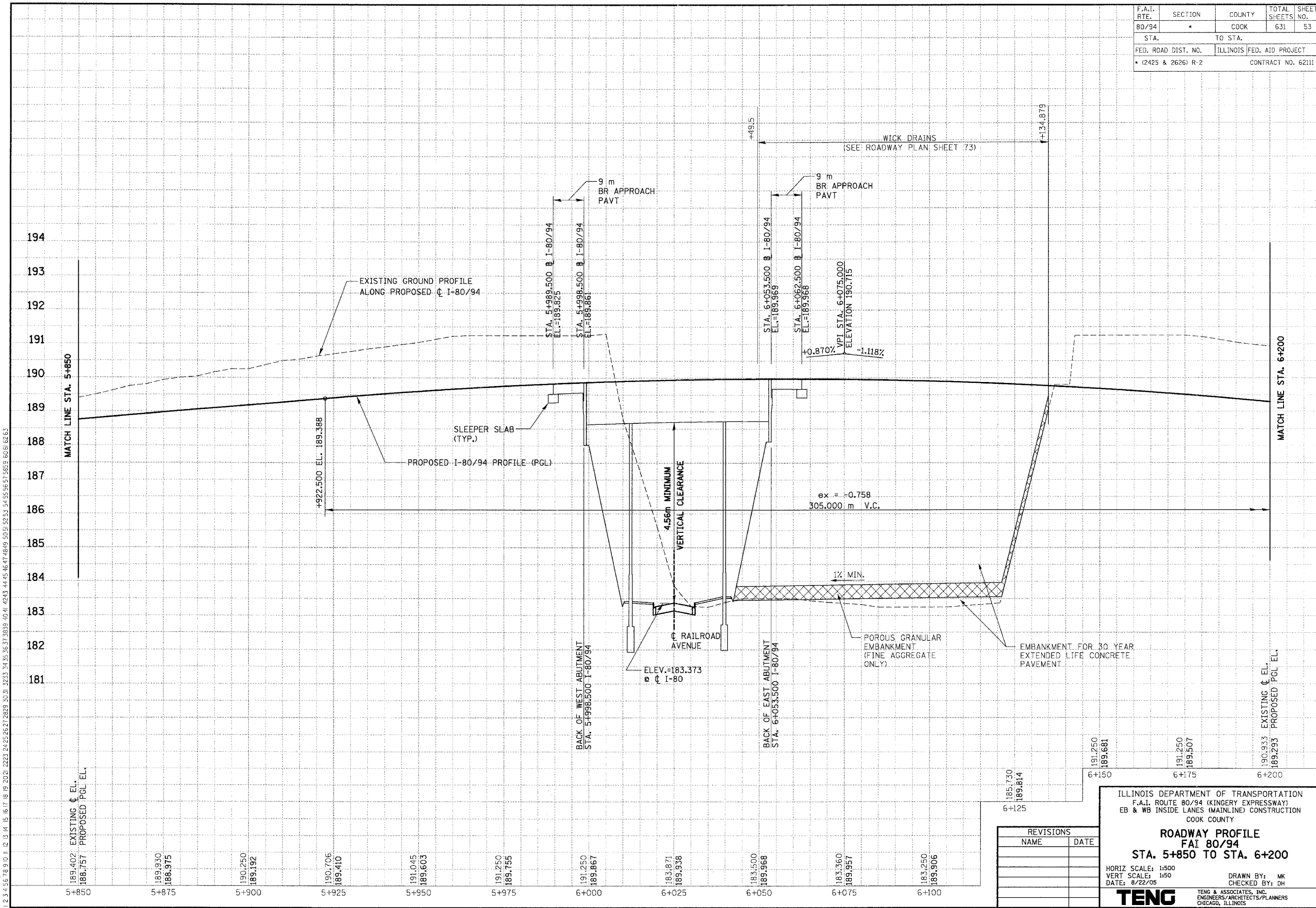


F.A.I. RTE. 80/94	SECTION *	COUNTY COOK	TOTAL SHEETS 631	SHEET NO. 53
STA. FED. ROAD DIST. NO.		TO STA. ILLINOIS FED. AID PROJECT		
* (2425 & 2626) R-2		CONTRACT NO. 62111		

PRELIMINARY SURVEY	BY	DATE
SURVEY PLOTTED		
NOTE BOOK TEMPLATE		
AREAS CHECKED		
NO.		

ORIGINAL SURVEY	BY	DATE
SURVEY PLOTTED		
NOTE BOOK TEMPLATE		
AREAS CHECKED		
NO.		

-NFR7002ADGN...NFR7002ADGN...NFR7002ADGN...NFR7002ADGN...NFR7002ADGN...  
 8-P-2005, 000826 T:\DOCUMENT\831750\CIVIL\G04\NFR7002ADGN  
 1 2 3 4 5 6 7 8 9 10 11 12 13 14 15 16 17 18 19 20 21 22 23 24 25 26 27 28 29 30 31 32 33 34 35 36 37 38 39 40 41 42 43 44 45 46 47 48 49 50 51 52 53 54 55 56 57 58 59 60 61 62 63



REVISIONS	
NAME	DATE

ILLINOIS DEPARTMENT OF TRANSPORTATION  
 F.A.I. ROUTE 80/94 (KINGERY EXPRESSWAY)  
 EB & WB INSIDE LANES (MAINLINE) CONSTRUCTION  
 COOK COUNTY  
**ROADWAY PROFILE**  
**FAI 80/94**  
**STA. 5+850 TO STA. 6+200**  
 HORIZ SCALE: 1:500  
 VERT SCALE: 1:50  
 DATE: 8/22/05  
 DRAWN BY: MK  
 CHECKED BY: DH  
**TENG** TENG & ASSOCIATES, INC.  
 ENGINEERS/ARCHITECTS/PLANNERS  
 CHICAGO, ILLINOIS