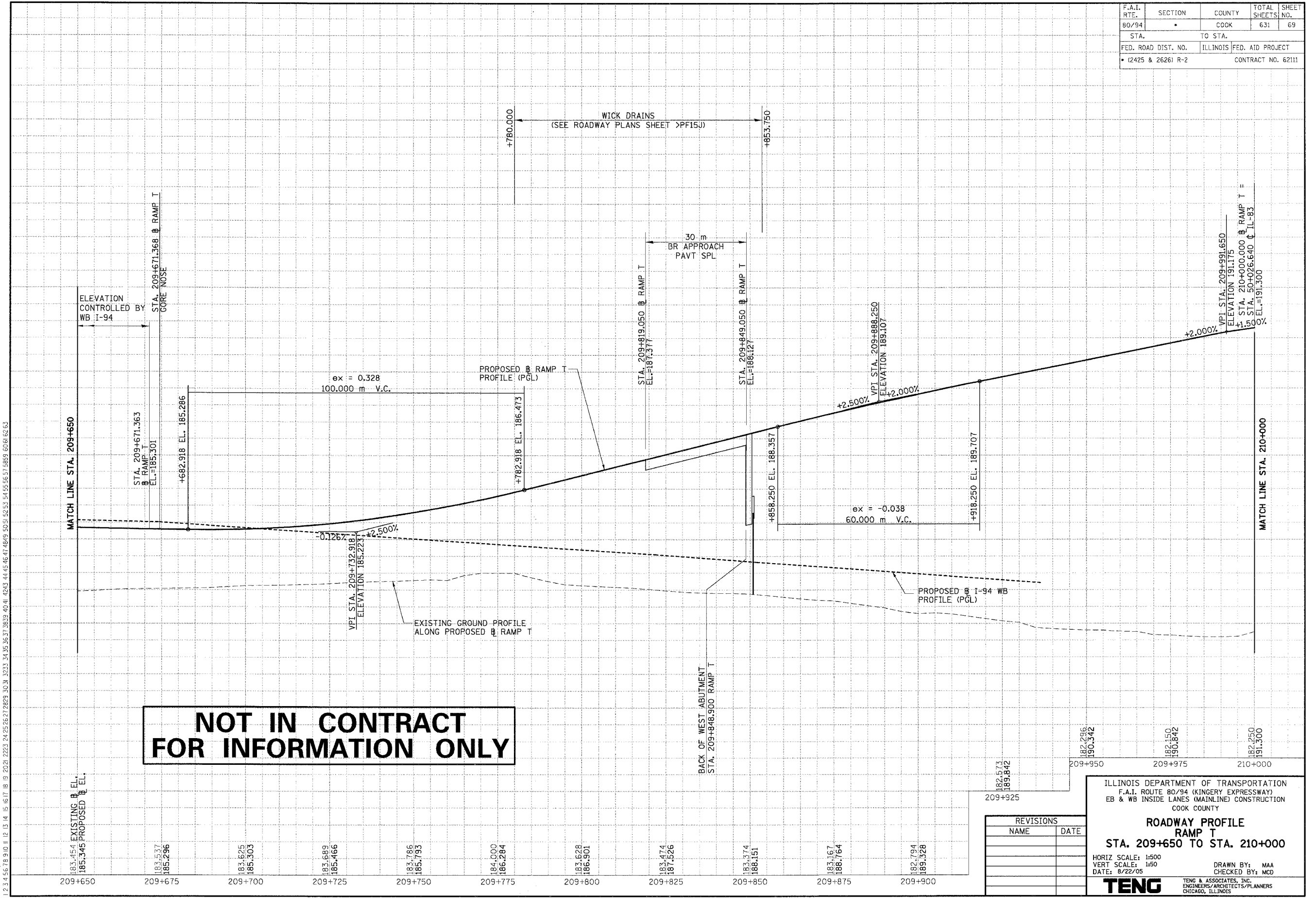


F.A.I. RTE.	SECTION	COUNTY	TOTAL SHEETS	SHEET NO.
80/94		COOK	631	69
STA.		TO STA.		
FED. ROAD DIST. NO.		ILLINOIS	FED. AID PROJECT	
• 12425 & 26261 R-2		CONTRACT NO. 62111		

PRELIMINARY SURVEY PLOTTED	BY	DATE
NOTE BOOK TEMPLATE		
AREAS CHECKED		
NO.		

ORIGINAL SURVEY PLOTTED	BY	DATE
NOTE BOOK TEMPLATE		
AREAS CHECKED		
NO.		

\FRIAD02A.DGN, \FRIAD02A.DGN, \4899002A.DGN, \FRIAD02A.DGN
 8-18-2005, 10:09:37 (1:\DOCUMENT\931750\CIVIL\CONTR\PF1602A.DGN
 1 2 3 4 5 6 7 8 9 10 11 12 13 14 15 16 17 18 19 20 21 22 23 24 25 26 27 28 29 30 31 32 33 34 35 36 37 38 39 40 41 42 43 44 45 46 47 48 49 50 51 52 53 54 55 56 57 58 59 60 61 62 63



**NOT IN CONTRACT
FOR INFORMATION ONLY**

REVISIONS	
NAME	DATE

ILLINOIS DEPARTMENT OF TRANSPORTATION
 F.A.I. ROUTE 80/94 (KINGERY EXPRESSWAY)
 EB & WB INSIDE LANES (MAINLINE) CONSTRUCTION
 COOK COUNTY

ROADWAY PROFILE
RAMP T
STA. 209+650 TO STA. 210+000

HORIZ SCALE: 1:500
 VERT SCALE: 1:50
 DATE: 8/22/05

DRAWN BY: MAA
 CHECKED BY: MCD

TENG ENGINEERS & ARCHITECTS/PLANNERS
 CHICAGO, ILLINOIS