

F.A.I. RTE.	SECTION	COUNTY	TOTAL SHEETS	SHEET NO.
80/94		COOK	631	181
STA.		TO STA.		
FED. ROAD DIST. NO.		ILLINOIS	FED. AID PROJECT	
		• (2425 & 2626) R-2		CONTRACT NO. 62111

TABLE OF SIGNING FOR BURNHAM AV DETOUR ST I

SYMBOL	SIGNS
AB	⑨ ④ ②
AC	⑩
AD	⑥ ④ ②
AE	③ ④ ②
AF	⑨
AG	① ④ ②
AJ	⑩
AK	⑩ ④ ②
AL	⑧ ④ ②
AM	⑪ ⑧
AN	① ② ④
AP	⑧
AR	⑫
AS	⑬
AT	⑦ ④ ②
AU	⑭
AV	⑮
AW	⑰
AX	⑱

TABLE OF SIGNING FOR 175TH ST DETOUR ST I

SYMBOL	SIGNS
BA	⑨ ⑮ ⑮
BB	① ⑮ ⑮
BC	⑥ ⑮ ⑮
BD	⑦ ⑮ ⑮
BE	③ ⑮ ⑮
BF	① ⑮ ⑮
BG	⑰
BH	⑨ ⑮ ⑮
BI	③ ⑮ ⑮
BJ	⑭

TABLE OF SIGNING FOR STAGE II

SYMBOL	SIGNS
CA	⑭
CB	⑩

NOTES:

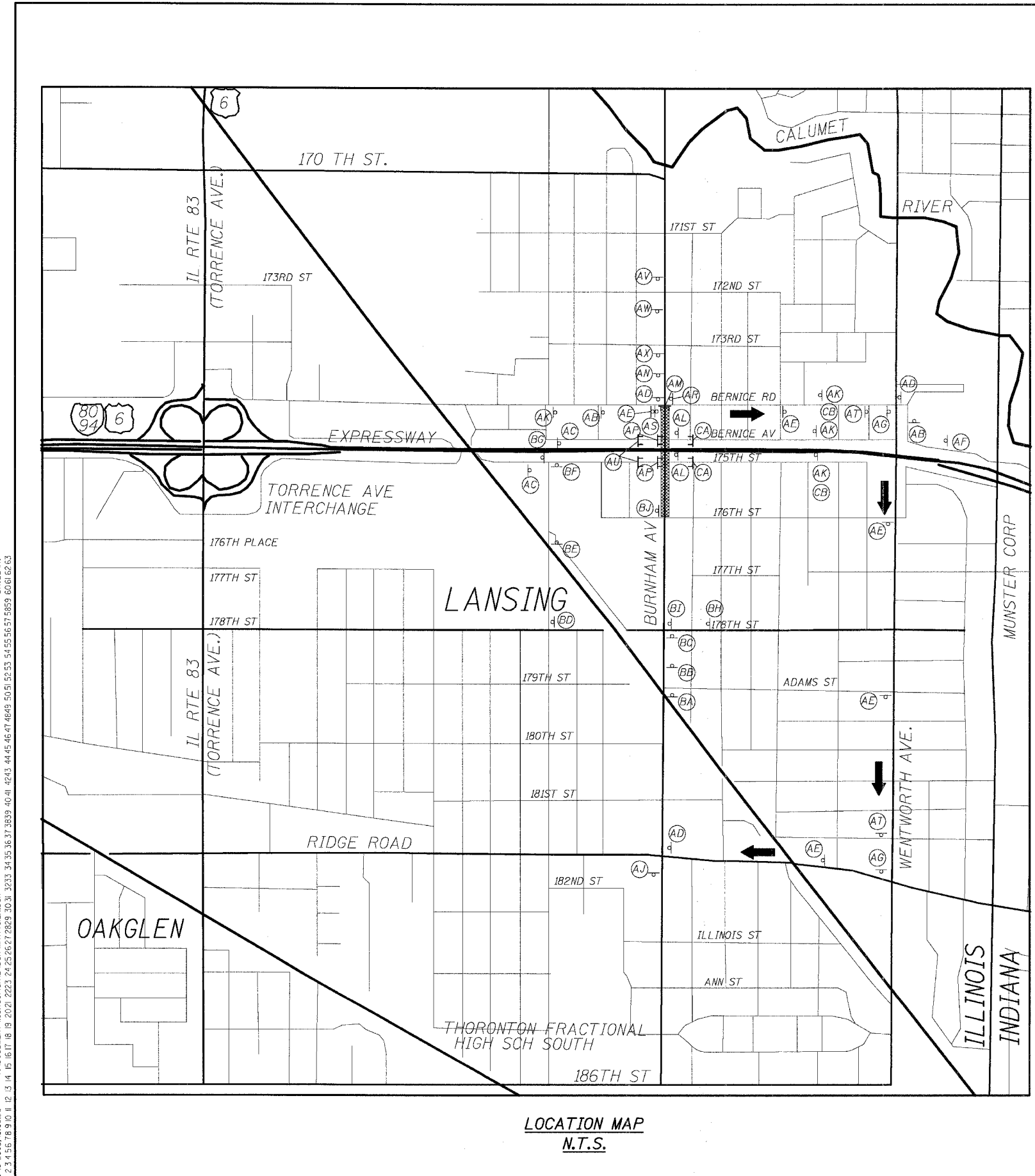
1. THE COST OF FURNISHING, ERECTING, MAINTAINING, AND REMOVING TRAFFIC CONTROL DEVICES SHOWN FOR STAGE 1 DETOUR OF BURNHAM AVENUE AND THE RELATED DETOUR OF 175TH STREET SHALL BE PAID FOR AS TRAFFIC CONTROL AND PROTECTION FOR TEMPORARY DETOUR, 1 EACH.
2. THE COST OF FURNISHING, ERECTING, MAINTAINING, AND REMOVING TRAFFIC CONTROL DEVICES SHOWN FOR STAGE 2 SHALL BE INCLUDED IN THE CONTRACT UNIT PRICE FOR TRAFFIC CONTROL AND PROTECTION (SPECIAL).
3. TYPE III BARRICADES SHALL BE PLACED COMPLETELY ACROSS THE SIDEWALKS AND ROADWAY TO PREVENT PEDESTRIAN AND VEHICULAR ACCESS TO THE WORK AREA. TWO (2) HI-INTENSITY FLASHERS SHALL BE PLACED ON EACH BARRICADE.
4. STANDARD 702001 IS UTILIZED WITH THIS DETOUR.

LEGEND:

- TT TYPE III BARRICADES WITH 2 HI-INTENSITY FLASHERS EACH
- ▽ SIGN ON PERMANENT SUPPORT (OR ON EXISTING SUPPORT IF AVAILABLE)
- ▨ CONSTRUCTION WORK AREA
- ➔ DETOUR ROUTE

REVISIONS	
NAME	DATE

- ① M4-9L 750 x 600 mm
- ② BURNHAM AVE D3-1 VAR. x 200 mm
- ③ M4-9 750 x 600 mm
- ④ SOUTH M3-3 600 x 300 mm
- ⑤ M4-9R 750 x 600 mm
- ⑥ M4-9L 750 x 600 mm
- ⑦ M4-9R 750 x 600 mm
- ⑧ ROAD CLOSED R11-2 1200 x 750 mm
- ⑨ DETOUR AHEAD W20-2 1200 x 1200 mm
- ⑩ ROAD CLOSED AHEAD W20-3 1200 x 1200 mm
- ⑪ M4-10L 1200 x 450 mm
- ⑫ R3-2 600 x 600 mm
- ⑬ R3-1 600 x 600 mm
- ⑭ ROAD CLOSED TO THRU TRAFFIC R11-4 1500 x 750 mm
- ⑮ 175TH ST D3-1
- ⑯ WEST
- ⑰ END DETOUR M4-8a 600 x 450 mm
- ⑱ ROAD CLOSED 1500 FT C24-12 1200 x 1200 mm
- ⑳ DETOUR 1000 FT W20-4 1200 x 1200 mm
- ROAD CLOSED 500 FT C24-14 1200 x 1200 mm



1: ABBROCCALIGN
 8-19-2005: 1509823
 1, 2, 3, 4, 5, 6, 7, 8, 9, 10, 11, 12, 13, 14, 15, 16, 17, 18, 19, 20, 21, 22, 23, 24, 25, 26, 27, 28, 29, 30, 31, 32, 33, 34, 35, 36, 37, 38, 39, 40, 41, 42, 43, 44, 45, 46, 47, 48, 49, 50, 51, 52, 53, 54, 55, 56, 57, 58, 59, 60, 61, 62, 63
 T:\DOCUMENT\93750\CIVIL\DRN\MT1782\ALIGN
 BAIZEKJ

ILLINOIS DEPARTMENT OF TRANSPORTATION
 F.A.I. ROUTE 80/94 (KINGERY EXPRESSWAY)
 EB & WB INSIDE LANES (MAINLINE) CONSTRUCTION
 COOK COUNTY

**MAINTENANCE OF TRAFFIC
 TRAFFIC CONTROL SIGNING
 AND BURNHAM AVENUE DETOUR**

SCALE: DATE: 8/22/05 DRAWN BY: CHECKED BY:

TENG TENG & ASSOCIATES, INC.
 ENGINEERS/ARCHITECTS/PLANNERS
 CHICAGO, ILLINOIS