

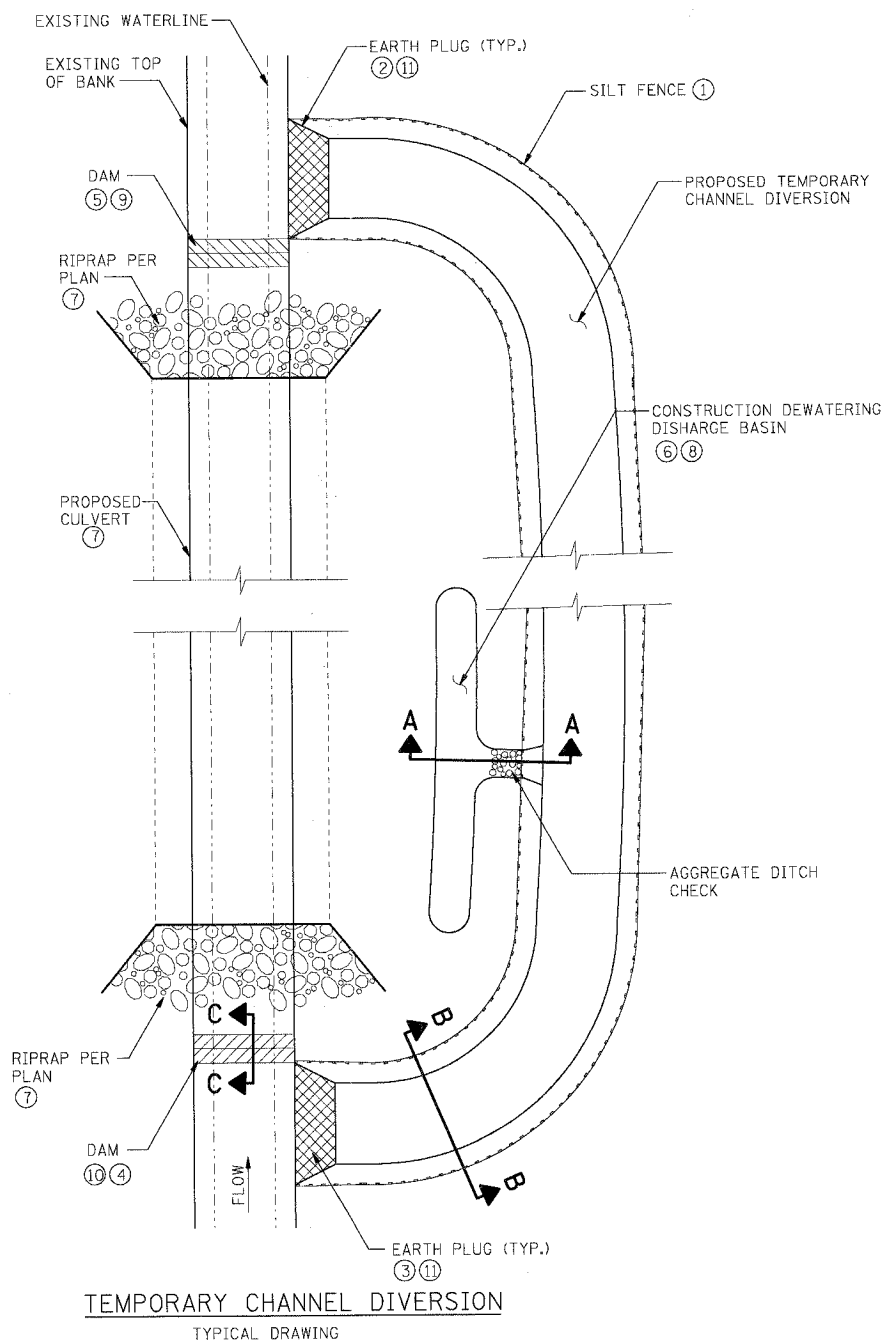
F.A.I. RTE.	SECTION	COUNTY	TOTAL SHEETS	SHEET NO.
80/94	*	COOK	631	196
STA.	TO STA.			
FED. ROAD DIST. NO.	ILLINOIS	FED. AID PROJECT		
* (2425 & 2626) R-2		CONTRACT NO. 62111		

GENERAL NOTES

1. THE CONTRACTOR SHALL FOLLOW THE CONSTRUCTION SEQUENCE DESCRIBED BELOW.
2. THE NEW CULVERT AND ANY REQUIRED RIPRAP SHALL BE COMPLETED PRIOR TO INITIATING OPENING OF THE CULVERT TO FLOW.

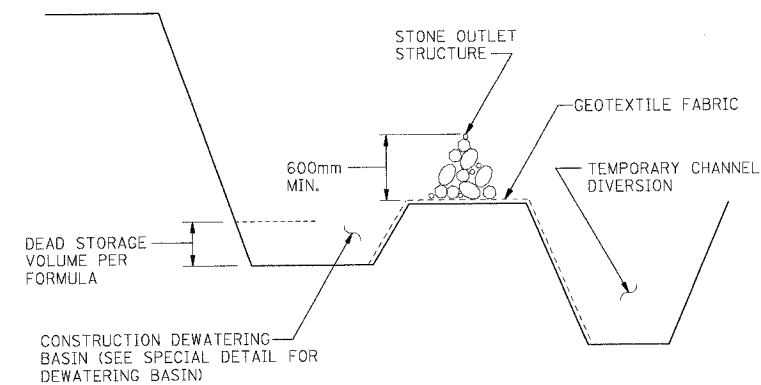
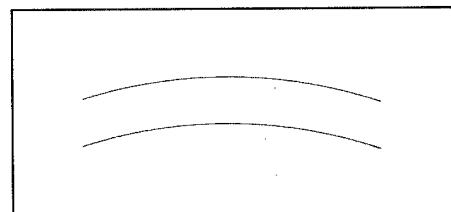
CONSTRUCTION SEQUENCE

1. INSTALL SILT FENCE. EXCAVATE TEMPORARY CHANNEL DIVERSION - DO NOT BREAK THROUGH EXISTING EARTH PLUG AT UPSTREAM AND DOWN STREAM ENDS. LINE CHANNEL WITH GEOTEXTILE FABRIC.
2. EXCAVATE DOWNSTREAM EARTH PLUG, ALLOW WATER LEVELS TO EQUALIZE.
3. EXCAVATE UPSTREAM EARTH PLUG.
4. CONSTRUCT UPSTREAM DAM IN ACCORDANCE WITH DETAIL.
5. CONSTRUCT DOWNSTREAM DAM IN ACCORDANCE WITH DETAIL.
6. CONSTRUCT DEWATERING DISCHARGE BASIN. DEWATER PROPOSED CULVERT LOCATION BY PUMPING INTO DISCHARGE BASIN ONLY.
7. CONSTRUCT PROPOSED CULVERT AND ANY REQUIRED STABILIZATION BOTH UPSTREAM AND DOWNSTREAM, INCLUDING CHANNEL TRANSITIONS.
8. REMOVE (FILL) DEWATERING DISCHARGE BASIN.
9. REMOVE DOWNSTREAM DAM, ALLOW WATER LEVELS TO EQUALIZE.
10. REMOVE UPSTREAM DAM.
11. CONSTRUCT EARTH PLUGS, UTILIZE SALVAGED RIPRAP FROM DAMS.
12. FILL CHANNEL PER EMBANKMENT SPECIFICATIONS.

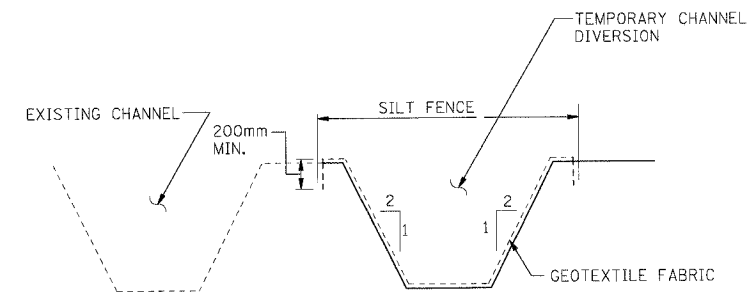


TEMPORARY CHANNEL DIVERSION
TYPICAL DRAWING

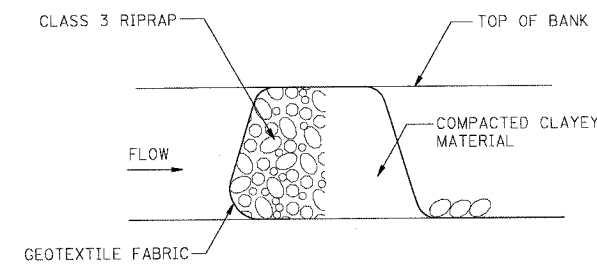
STANDARD SYMBOL



SECTION A-A



SECTION B-B



SECTION C-C

\A:\85902\A.DGN
 6-16-2005, 10:46:10
 2, 3, 4, 5, 6, 7, 8, 9, 10, 11, 12, 13, 14, 15, 16, 17, 18, 19, 20, 21, 22, 23, 24, 25, 26, 27, 28, 29, 30, 31, 32, 33, 34, 35, 36, 37, 38, 39, 40, 41, 42, 43, 44, 45, 46, 47, 48, 49, 50, 51, 52, 53, 54, 55, 56, 57, 58, 59, 60, 61, 62, 63
 BAIZERKU
 T:\DOCUMENT\1\8376\PC\1\CONVENTION\032\A.DGN
 2/25/2005 2:28:27 PM

REVISIONS	
NAME	DATE

ILLINOIS DEPARTMENT OF TRANSPORTATION
 F.A.I. ROUTE 80/94 (KINGERY EXPRESSWAY)
 EB & WB INSIDE LANES (MAINLINE) CONSTRUCTION
 COOK COUNTY

**EROSION AND SEDIMENT CONTROL
 TEMPORARY CHANNEL DIVERSION DETAIL**

SCALE: NONE
 DATE: 8/22/05

DRAWN BY: SN
 CHECKED BY: MD

TENG
 TENG & ASSOCIATES, INC.
 ENGINEERS/ARCHITECTS/PLANNERS
 CHICAGO, ILLINOIS