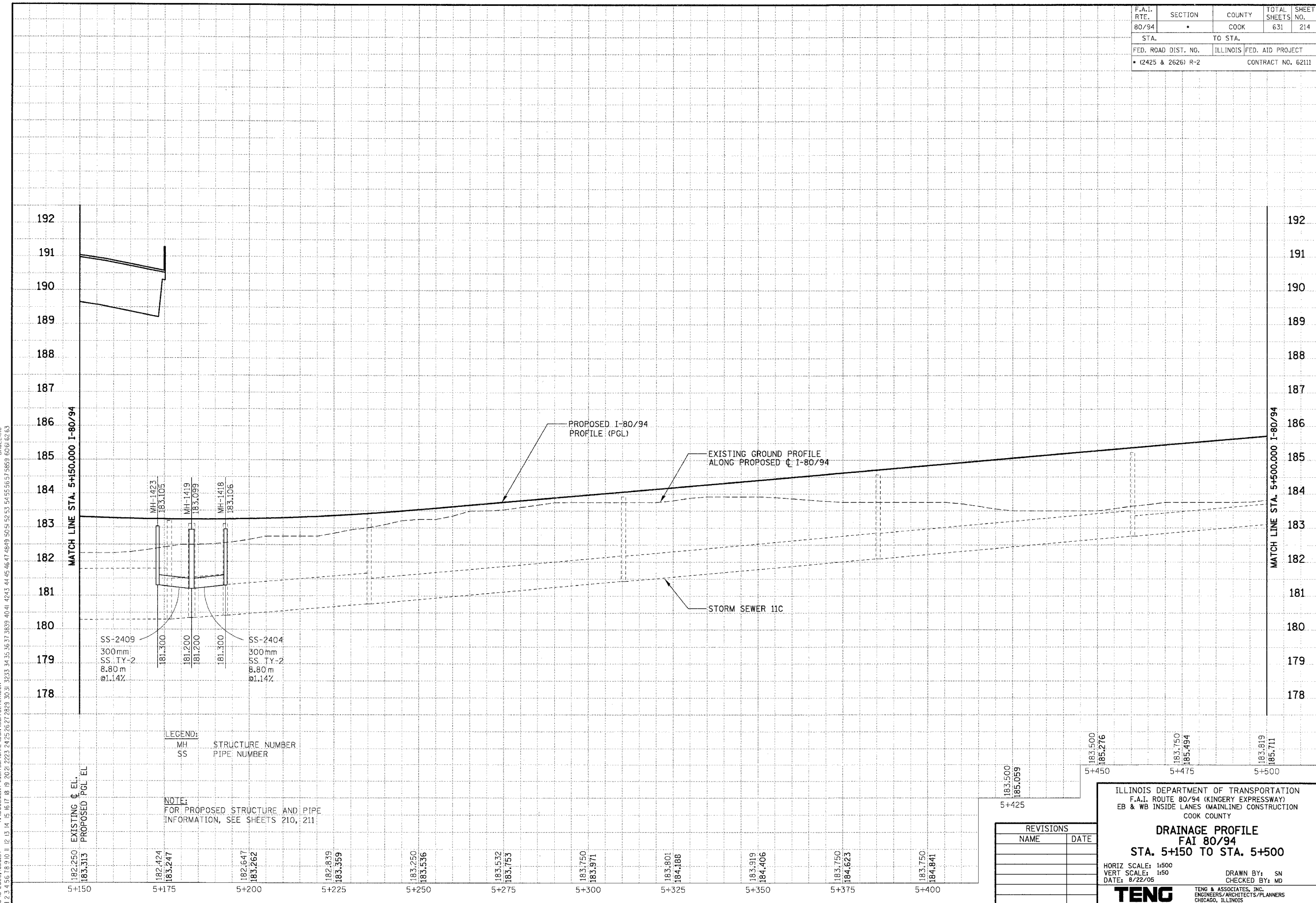


F.A.I. RTE. 80/94	SECTION •	COUNTY COOK	TOTAL SHEETS 631	SHEET NO. 214
STA. • (2425 & 2626) R-2		TO STA. ILLINOIS FED. AID PROJECT CONTRACT NO. 62111		

PRELIMINARY SURVEY	BY	DATE
SURVEY PLOTTED		
NOTE BOOK		
NO.		
AREAS CHECKED		

ORIGINAL SURVEY	BY	DATE
SURVEY PLOTTED		
NOTE BOOK		
NO.		
AREAS CHECKED		

\AFR7002A.DGN, \NRY7002A.DGN, \AFR7002A.DGN, \AFR7002A.DGN, \NAB99002A.DGN
 8-18-2005, 10:56:57, T:\DOCUMENTS\83150\CHILINDEN\0702A.DGN
 1 2 3 4 5 6 7 8 9 10 11 12 13 14 15 16 17 18 19 20 21 22 23 24 25 26 27 28 29 30 31 32 33 34 35 36 37 38 39 40 41 42 43 44 45 46 47 48 49 50 51 52 53 54 55 56 57 58 59 60 61 62 63
 BALZFKJ



REVISIONS	
NAME	DATE

ILLINOIS DEPARTMENT OF TRANSPORTATION
 F.A.I. ROUTE 80/94 (KINGERY EXPRESSWAY)
 EB & WB INSIDE LANES (MAINLINE) CONSTRUCTION
 COOK COUNTY

**DRAINAGE PROFILE
 FAI 80/94
 STA. 5+150 TO STA. 5+500**

HORIZ SCALE: 1"=500
 VERT SCALE: 1"=50
 DATE: 8/22/05

DRAWN BY: SM
 CHECKED BY: MD

TENG
 TENG & ASSOCIATES, INC.
 ENGINEERS/ARCHITECTS/PLANNERS
 CHICAGO, ILLINOIS