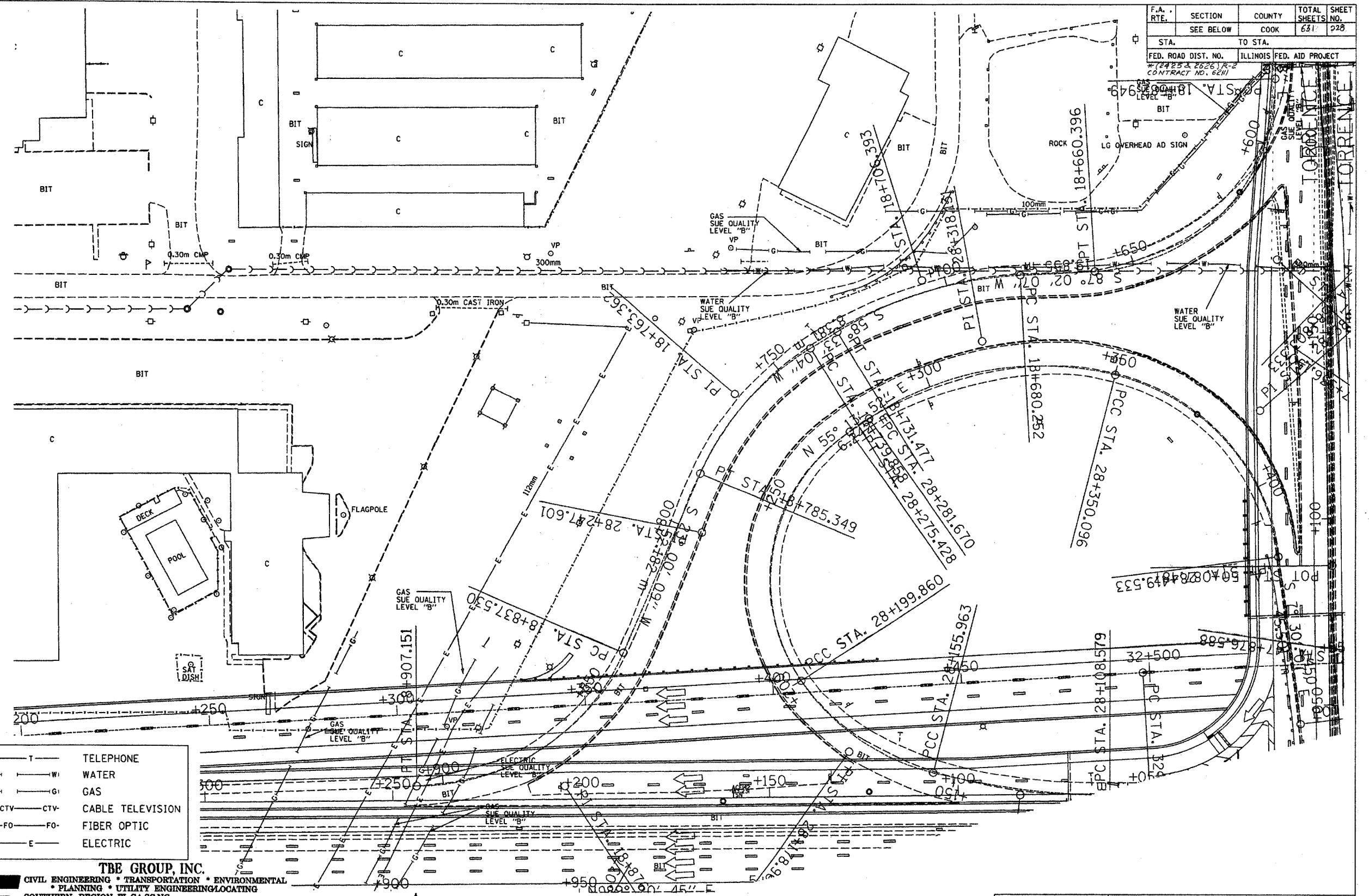


F.A. RTE.	SECTION	COUNTY	TOTAL SHEETS NO.	SHEET NO.
SEE BELOW	COOK	631	228	
STA. TO STA.		ILLINOIS FED. AID PROJECT		
FED. ROAD DIST. NO.		CONTRACT NO. 62110		



T	T	TELEPHONE
W	W	WATER
G	G	GAS
CTV	CTV	CABLE TELEVISION
FO	FO	FIBER OPTIC
E	E	ELECTRIC

**TBE GROUP, INC.**  
 CIVIL ENGINEERING • TRANSPORTATION • ENVIRONMENTAL  
 • PLANNING • UTILITY ENGINEERING/LOCATING  
 SOUTHERN REGION: FL, GA, SC, NC  
 NORTHERN REGION: IL, IN, MI, OH, MD, NJ, NY  
 PA, VA, CANADA  
 WESTERN REGION: AZ, NV, NM, TX, CA, OR, UT, WA

IL09500122  
 TBE SUE PAGE NO: 32 of 52  
 Signature *Robert L. Clements Jr.*  
 SUE Quality Level "A" : Test Holes  
 SUE Quality Level "B" : Designating



205 W. WACKER DRIVE  
 SUITE 1020  
 CHICAGO, IL 60606  
 (312) 704-1970

Utilities shown on these plans as depicted in the legend have been investigated by TBE Group, Inc in accordance with SUE Industry Standards as of 2/8/02. All other information shown has been provided to TBE Group, Inc by others.

REVISIONS	
NAME	DATE

ILLINOIS DEPARTMENT OF TRANSPORTATION  
 E. of IL RT. 83/US RT. 6 to E. Burnham Ave.  
 I-80/I-94 Burnham Ave. to State Line  
 I-80/I-94 (Tollway) E. of I-94 to W. of RT. 83/US 6.  
 I-94/IL RT. 394 S. of US 6 to 186th Street (Inbound & S. bound)  
 Contract No. 62110, 62111, 62114, 62105, 62107, 62108  
 SCALE : 500 DRAWN BY : JAC  
 SOL "B" DATE : 2/8/02 CHECKED BY :