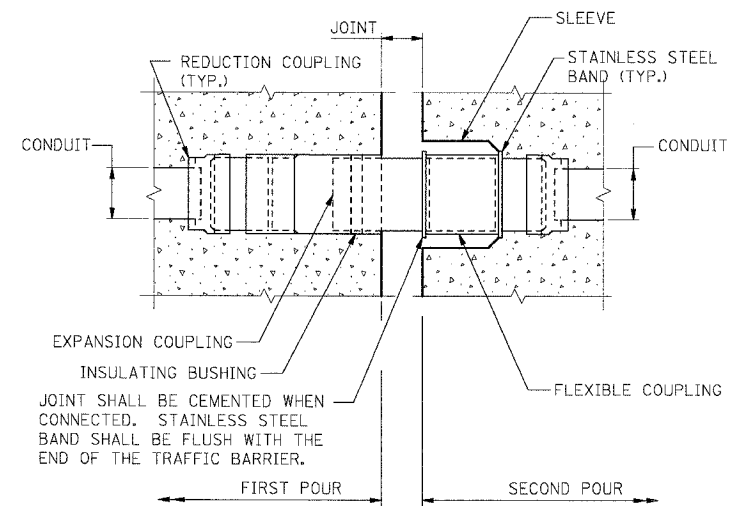
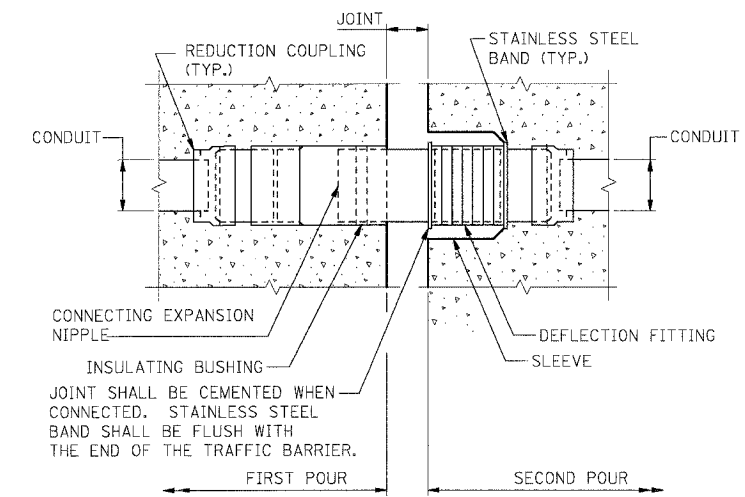


F.A.I. RTE.	SECTION	COUNTY	TOTAL SHEETS	SHEET NO.
80/94	*	COOK	631	296
STA.	TO STA.		FED. AID PROJECT	
FED. ROAD DIST. NO.		ILLINOIS	CONTRACT NO. 62111	
* (2425 & 2626) R-2				



JOINT SHALL BE CEMENTED WHEN CONNECTED. STAINLESS STEEL BAND SHALL BE FLUSH WITH THE END OF THE TRAFFIC BARRIER.

**CONDUIT EXPANSION JOINT**



JOINT SHALL BE CEMENTED WHEN CONNECTED. STAINLESS STEEL BAND SHALL BE FLUSH WITH THE END OF THE TRAFFIC BARRIER.

**CONDUIT EXPANSION/DEFLECTION JOINT**

**NOTES FOR CONDUIT EXP. & EXP./DEFL. JOINTS:**

1. ALL MATERIALS (FITTING, COUPLINGS, CONDUIT, ETC.) INCLUDED WITH CONDUIT PAY ITEMS.
2. ALL COUPLINGS SHALL BE WATERTIGHT.
3. EXPANSION ASSEMBLY SHALL BE INSTALLED IN ALL EXPANSION JOINTS THAT ARE AT LEAST 45MM AT 10°C, UNLESS OTHERWISE SHOWN OR AS DIRECTED BY THE ENGINEER. EXPANSION COUPLINGS SHALL HAVE A TOTAL MINIMUM MOVEMENT OF 150MM OR THE MOVEMENT CAPACITY OF THE STRUCTURAL JOINT, WHICHEVER IS GREATER.
4. EXPANSION/DEFLECTION ASSEMBLY SHALL BE INSTALLED AT EXPANSION JOINT LOCATIONS WHEN INDICATED IN THE PLANS, OR AS DIRECTED BY THE ENGINEER. EXPANSION/DEFLECTION COUPLINGS SHALL HAVE A TOTAL LONGITUDINAL MOVEMENT OF 100MM OR THE MOVEMENT CAPACITY OF THE STRUCTURAL JOINT, WHICHEVER IS GREATER. THE ROTATIONAL CAPACITY OF THE DEFLECTION FITTING SHALL ALLOW FOR A MINIMUM MOVEMENT OF 25MM IN THE TRANSVERSE DIRECTION.
5. EXPANSION AND EXPANSION/DEFLECTION COUPLING TYPES SHALL BE APPROVED BY THE ENGINEER.
6. REFER TO STRUCTURE PLANS FOR LOCATION & SIZE OF EXPANSION JOINTS.

\AR900724.DGN  
 R:9:20:05 (0)BC63  
 1, 2, 3, 4, 5, 6, 7, 8, 9, 10, 11, 12, 13, 14, 15, 16, 17, 18, 19, 20, 21, 22, 23, 24, 25, 26, 27, 28, 29, 30, 31, 32, 33, 34, 35, 36, 37, 38, 39, 40, 41, 42, 43, 44, 45, 46, 47, 48, 49, 50, 51, 52, 53, 54, 55, 56, 57, 58, 59, 60, 61, 62, 63  
 T:\DOCUMENTS\BKT50N\DWG\NCHANS\VIEWING\24.DGN  
 BAITEK1

SHT. 9 OF 12

ILLINOIS DEPARTMENT OF TRANSPORTATION  
 F.A.I. ROUTE 80/94 (KINGERY EXPRESSWAY)  
 EB & WB INSIDE LANES (MAINLINE) CONSTRUCTION  
 COOK COUNTY

**ELECTRICAL RACEWAY PLANS  
 DETAILS - II**

SCALE: NONE  
 DATE: 8/22/05

DRAWN BY: JFS  
 CHECKED BY: VCP

**TENG**  
 TENG & ASSOCIATES, INC.  
 ENGINEERS/ARCHITECTS/PLANNERS  
 CHICAGO, ILLINOIS

REVISIONS	
NAME	DATE