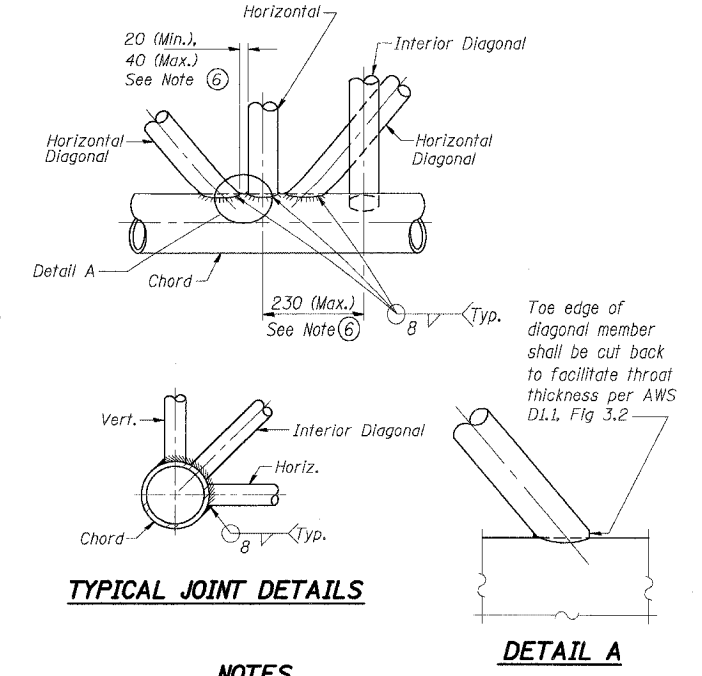
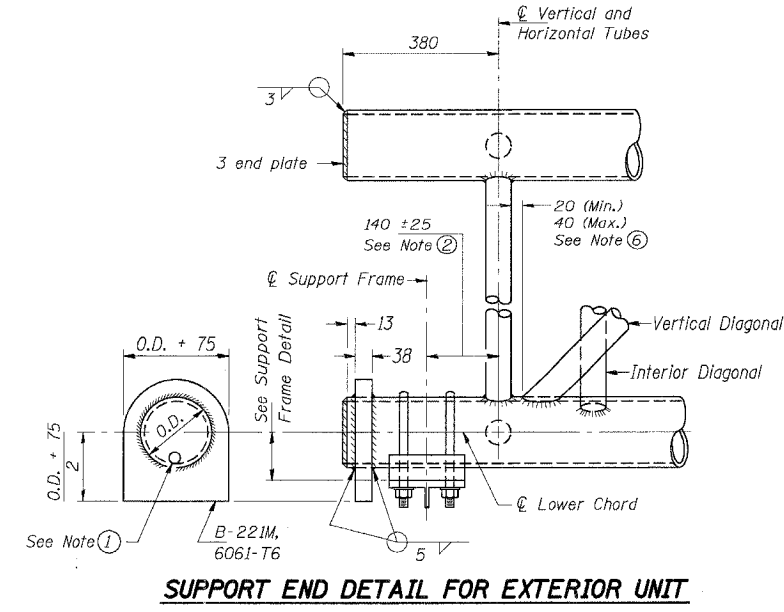
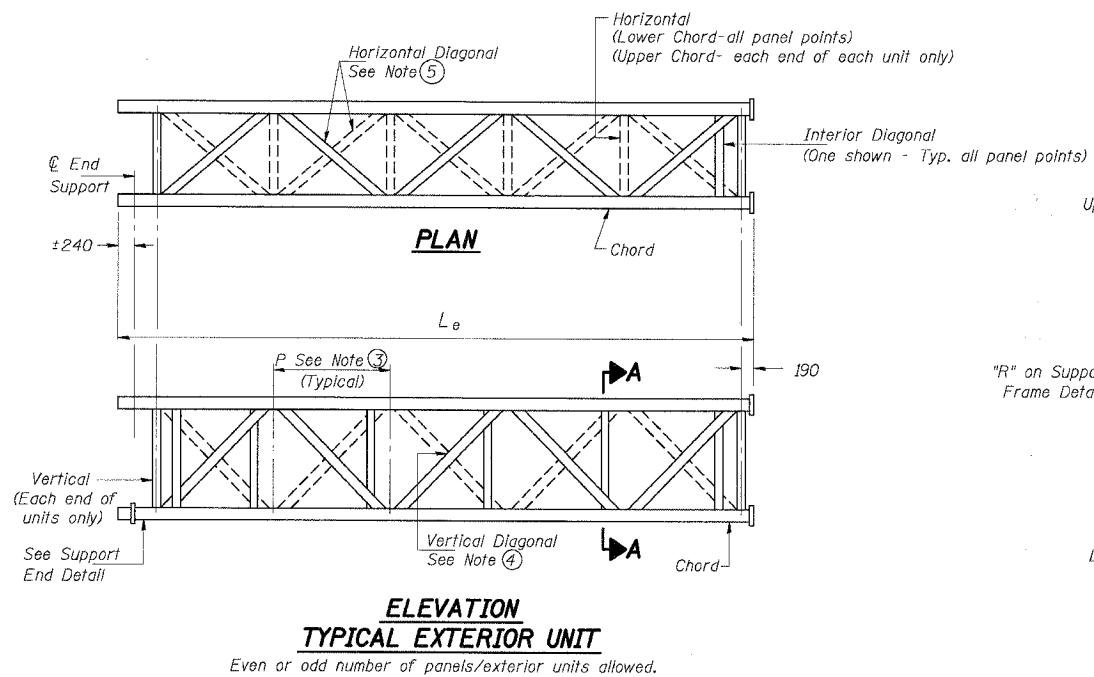
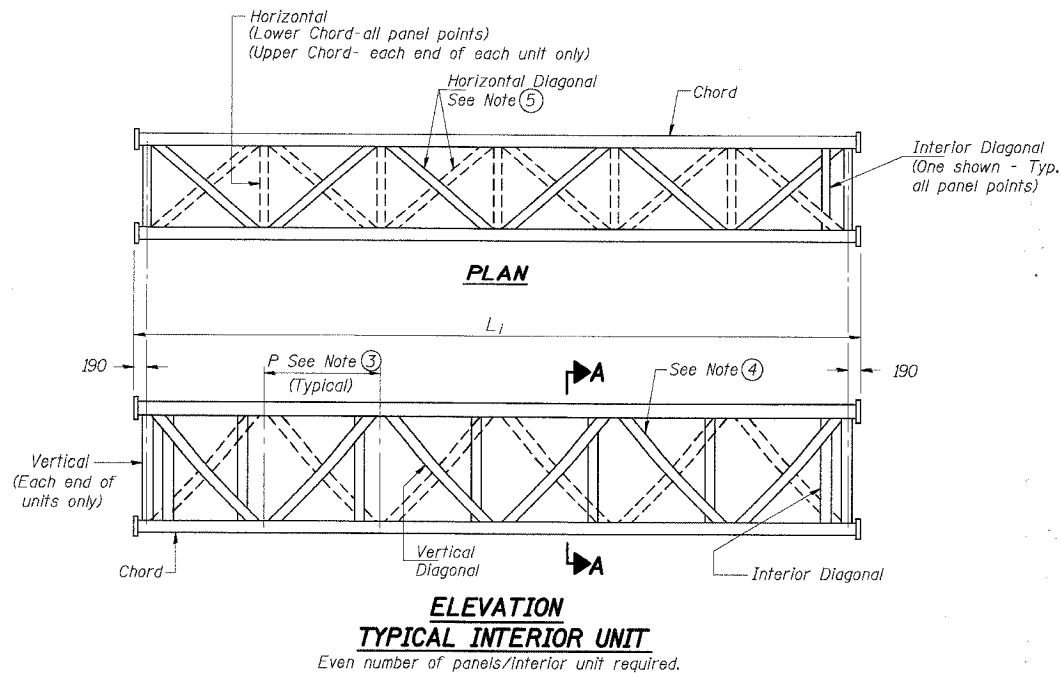
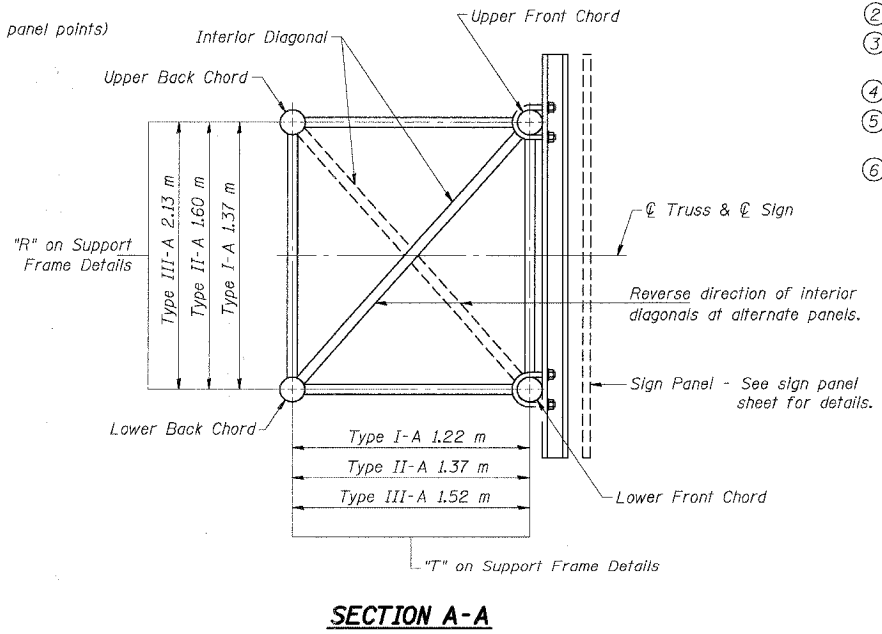


F.A.I. RTE.	SECTION	COUNTY	TOTAL SHEETS	SHEET NO.
80/94		COOK	631	318
STA.	TO STA.			
FED. ROAD DIST. NO.	ILLINOIS	FED. AID PROJECT		
• (2425 & 2626) R-2		CONTRACT NO. 62111		



- NOTES**
- Contractor may alternatively use standard aluminum drive-fit cap to close end. 13 mm φ drain hole in end plate/drive-fit cap. (Typ. at ends of all chords)
 - 140 mm end dimension may vary by ±25 mm to provide uniform panel spacing (P).
 - Panel spacing (P) shall be uniform for entire truss and between 1.20 m and 1.50 m for Type I-A or 1.20 m and 1.65 m for Types II-A and III-A.
 - Vertical Diagonals in front and back face shall alternate.
 - Hidden lines show wind bracing alternates direction between planes of top and bottom chords.
 - All diagonals shall be detailed for minimum offset from the panel point based on the following: Offset shall be such as to provide a 20 mm minimum to 40 mm maximum clearance between any diagonal and any horizontal or vertical member, and to provide clearance for U-bolt connections of signs or walkway brackets.



BAJZEKJ
 18950002A.DGN
 7-2-2005, 10:23:47
 T:\DOCUMENT\18950002A.DGN
 11 12 13 14 15 16 17 18 19 20 21 22 23 24 25 26 27 28 29 30 31 32 33 34 35 36 37 38 39 40 41 42 43 44 45 46 47 48 49 50 51 52 53 54 55 56 57 58 59 60 61 62 63

OS-A-2(M) 11/1/2002

REVISIONS	
NAME	DATE

ILLINOIS DEPARTMENT OF TRANSPORTATION
 F.A.I. ROUTE 80/94 (KINGERY EXPRESSWAY)
 EB & WB INSIDE LANES (MAINLINE) CONSTRUCTION
 COOK COUNTY

**OVERHEAD SIGN STRUCTURES
 ALUMINUM TRUSS DETAILS
 TRUSS TYPES I-A, II-A & III-A**

SCALE: 1/8" = 1'-0"
 DATE: 7/18/2005

DRAWN BY: NK
 CHECKED BY: VCP

TENG
 ENGINEERS/ARCHITECTS/PLANNERS
 CHICAGO, ILLINOIS