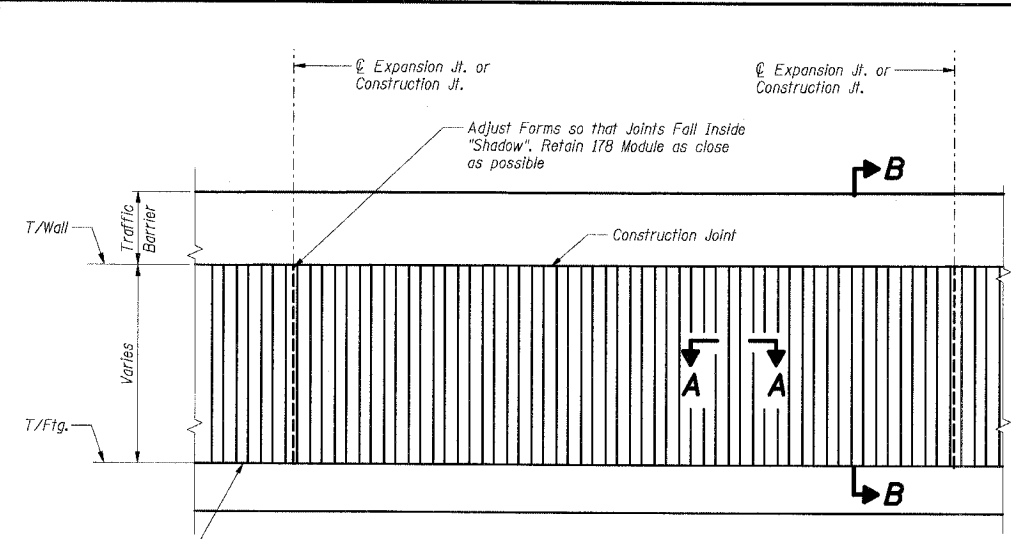
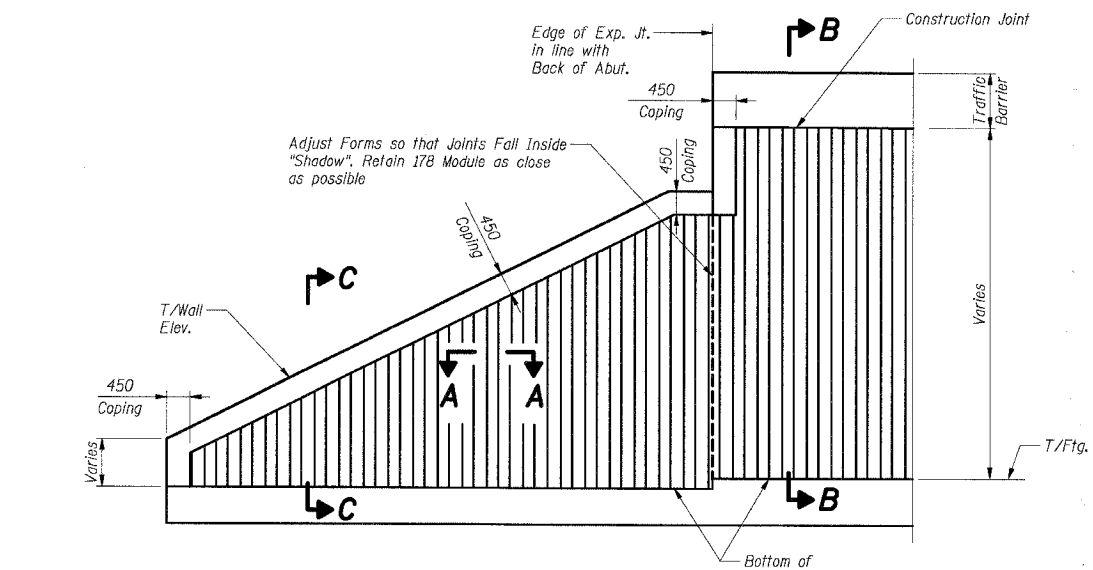


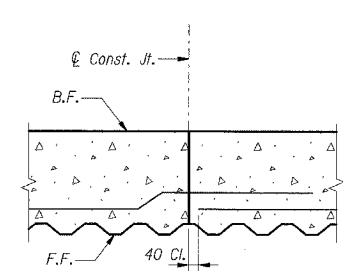
F.A.I. RTE.	SECTION	COUNTY	TOTAL SHEETS	SHEET NO.
80/94	*	COOK	631	354
STA.	TO STA.			
FED. ROAD DIST. NO.	ILLINOIS	FED. AID PROJECT		
* (2425 & 2626) R-2		CONTRACT NO. 62111		



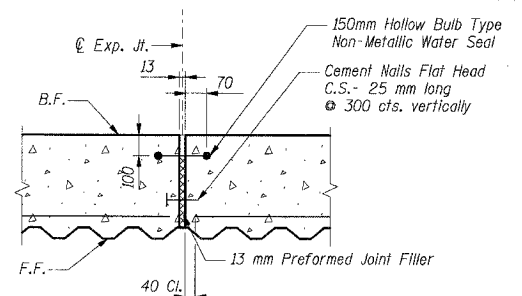
ELEVATION - TYPICAL RUSTICATION FINISH



ELEVATION - RUSTICATION FINISH AT ABUTMENT

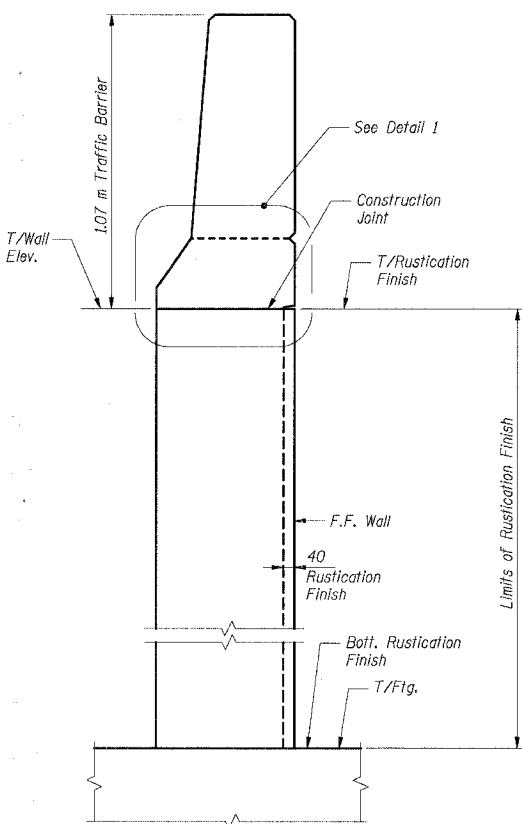


CONSTRUCTION JOINT DETAIL

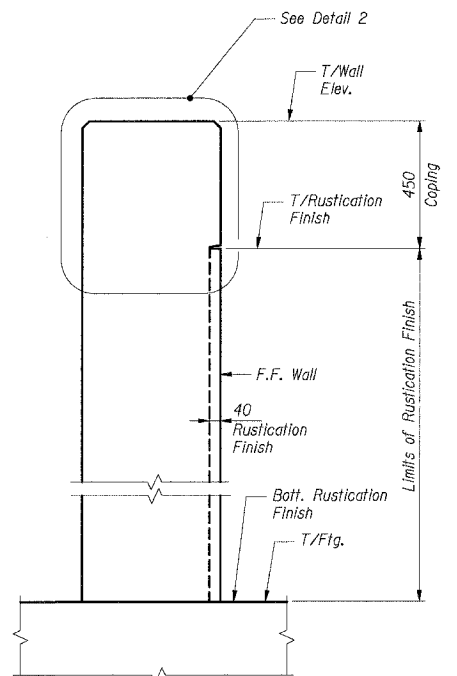


EXPANSION JOINT DETAIL

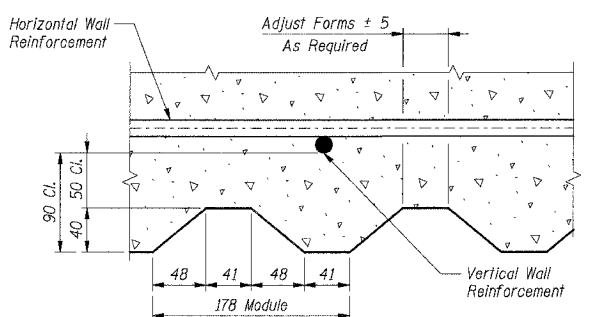
Cost of joint sealant, non-metallic water seal, P.J.F. and cement nails are included with Concrete Structures.



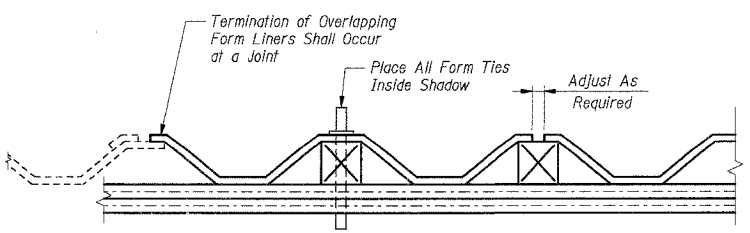
SECTION B-B



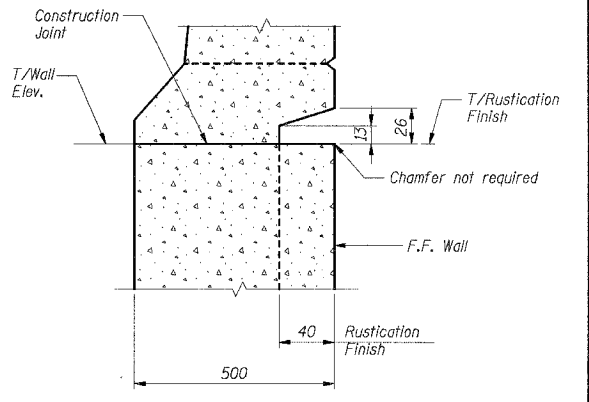
SECTION C-C



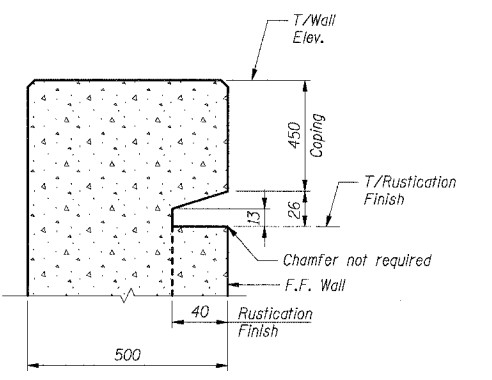
SECTION A-A



SUGGESTED FORMWORK DETAIL



DETAIL 1
Not to Scale



DETAIL 2
Not to Scale

BILL OF MATERIAL

Item	Unit	Total
Rustication Finish	Sq m	303

- Notes:
 1. All dimensions are in millimeters (mm) except as noted.
 2. All edges shall have a 20 mm chamfer unless noted otherwise.

*** 2001-167R, (2425 & 2626) R-1 AND (2425 & 2626) R-2
 ILLINOIS DEPARTMENT OF TRANSPORTATION
 F.A.I. ROUTE 80/94 (KINGERY EXPRESSWAY)
 EB & WB INSIDE LANES (MAINLINE) CONSTRUCTION
 RETAINING WALL - STRUCTURE NO. 016-W850
 SECTIONS ***
 COOK COUNTY

SHT. RW850-49 OF 58

REVISIONS	
NAME	DATE

RUSTICATION FINISH & JOINT DETAILS

DATE: 7/18/2005
 DRAWN BY: MJK
 CHECKED BY: MJK
TENG
 TENG & ASSOCIATES, INC.
 ENGINEERS/ARCHITECTS/PLANNERS
 CHICAGO, ILLINOIS

BAJ/ZKK/J
 12.3.4.56.78.9.10.11.12.13.14.15.16.17.18.19.20.21.22.23.24.25.26.27.28.29.30.31.32.33.34.35.36.37.38.39.40.41.42.43.44.45.46.47.48.49.50.51.52.53.54.55.56.57.58.59.60.61.62.63
 T:\DOCUMENT\875750\STRUCT\UDN\8570892A.DGN
 7-12-2005, 10:24:50
 \S99902A.DGN, \S99902A.DGN