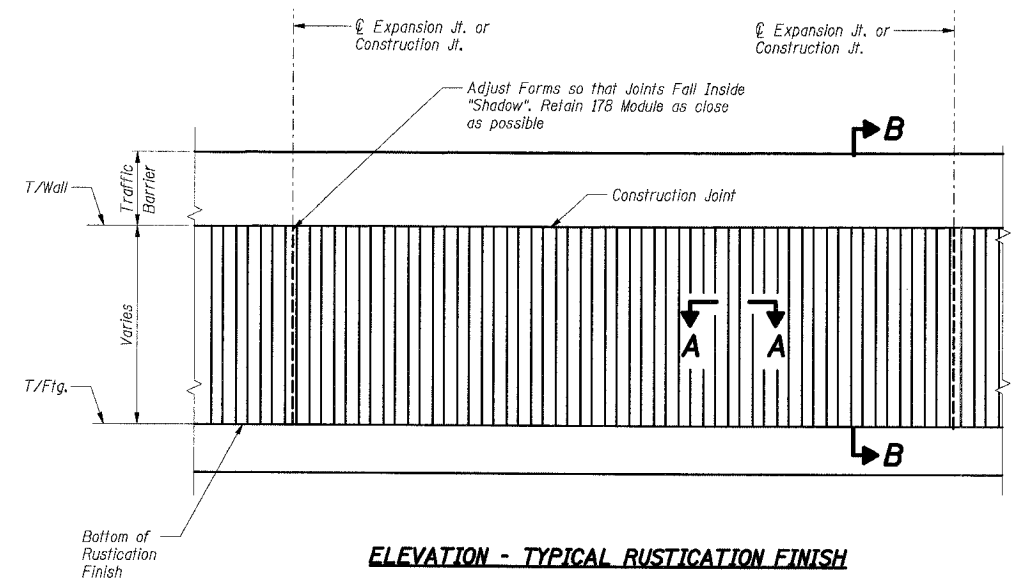
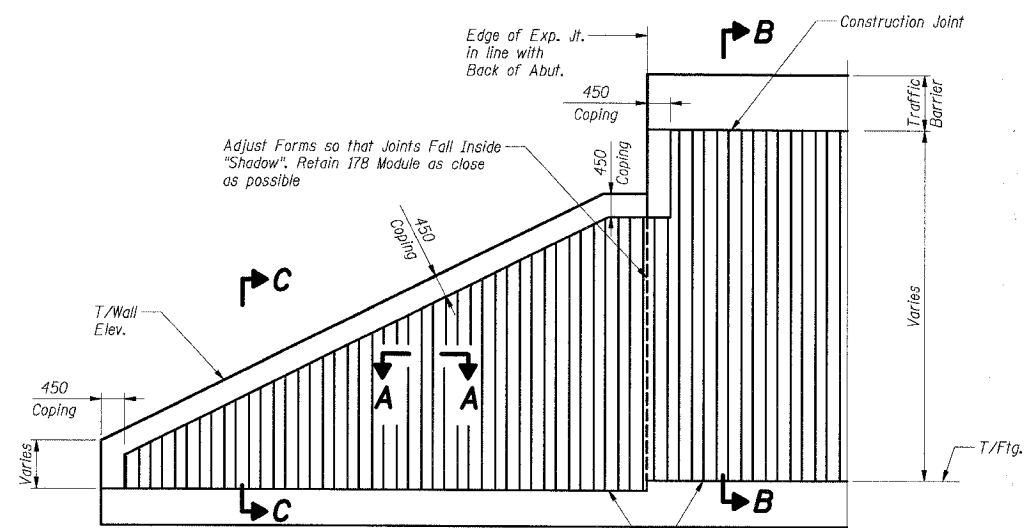


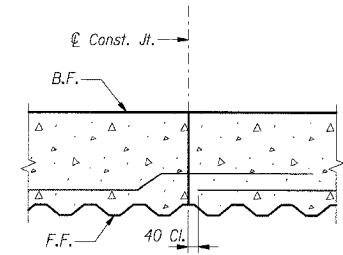
F.A.I. RTE.	SECTION	COUNTY	TOTAL SHEETS	SHEET NO.
80/94		COOK	631	370
STA.	TO STA.			
FED. ROAD DIST. NO.	ILLINOIS	FED. AID PROJECT		
(2425 & 2626) R-2		CONTRACT NO. 62111		



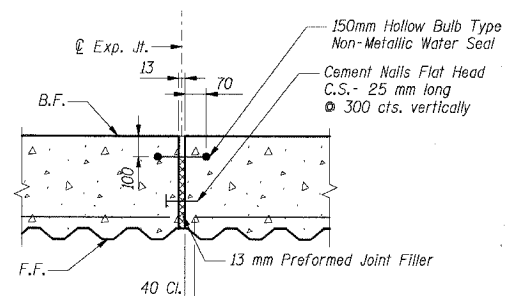
ELEVATION - TYPICAL RUSTICATION FINISH



ELEVATION - RUSTICATION FINISH AT ABUTMENT

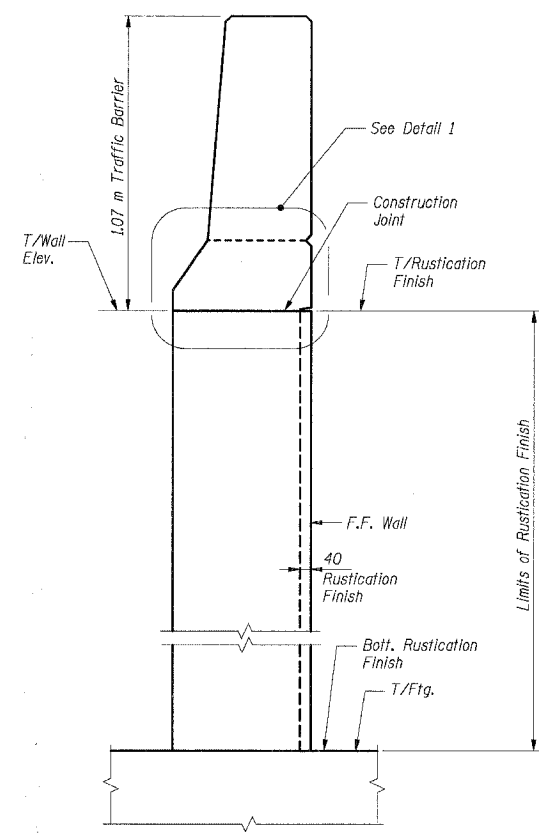


CONSTRUCTION JOINT DETAIL

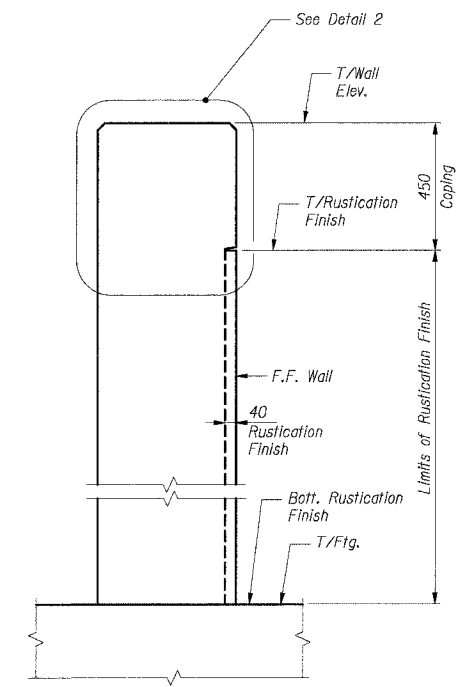


EXPANSION JOINT DETAIL

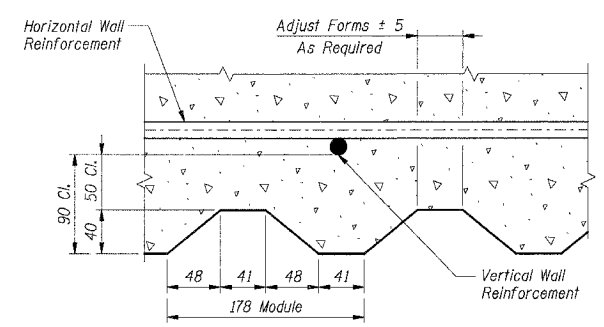
Cost of joint sealant, non-metallic water seal, P.J.F. and cement nails are included with Concrete Structures.



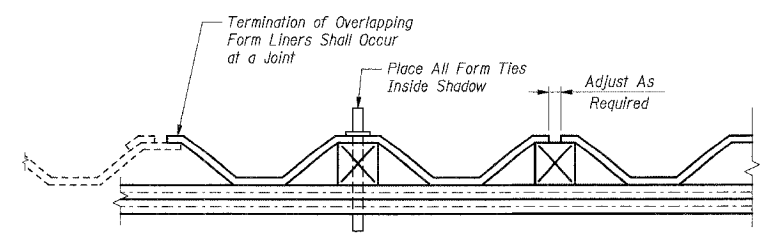
SECTION B-B



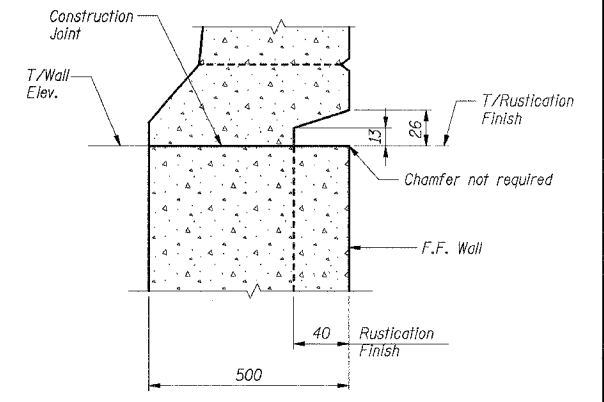
SECTION C-C



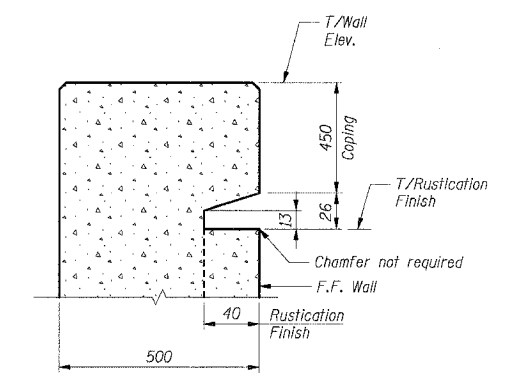
SECTION A-A



SUGGESTED FORMWORK DETAIL



DETAIL 1
Not to Scale



DETAIL 2
Not to Scale

BILL OF MATERIAL

Item	Unit	Total
Rustication Finish	Sq m	365

- Notes:
1. All dimensions are in millimeters (mm) except as noted.
2. All edges shall have a 20 mm chamfer unless noted otherwise.

SHT. RW851-12 OF 14

REVISIONS	
NAME	DATE

ILLINOIS DEPARTMENT OF TRANSPORTATION
F.A.I. ROUTE 80/94 (KINGERY EXPRESSWAY)
EB & WB INSIDE LANES (MAINLINE) CONSTRUCTION
RETAINING WALL - STRUCTURE NO. 016-W851
SECTION (2425 & 2626) R-2
COOK COUNTY

RUSTICATION FINISH & JOINT DETAILS

DATE: 7/18/2005
DRAWN BY: LG
CHECKED BY: MJK

TENG
TENG & ASSOCIATES, INC.
ENGINEERS/ARCHITECTS/PLANNERS
CHICAGO, ILLINOIS

Shah Engineering Inc.
ONE IOWA PLAZA, SUITE 3300
CHICAGO, IL 60611
TEL: 312.626.3000
Consulting Engineers

\\MS99002A.DDN...\\9599032A.DDN
7-12-2005 10:25:56
1: \\\\DOCUMENT\337876\STRUCT\VDN\857442A.DGN
12 3 4 5 6 7 8 9 10 11 12 13 14 15 16 17 18 19 20 21 22 23 24 25 26 27 28 29 30 31 32 33 34 35 36 37 38 39 40 41 42 43 44 45 46 47 48 49 50 51 52 53 54 55 56 57 58 59 60 61 62 63