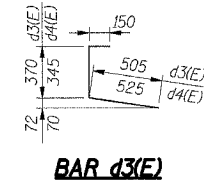
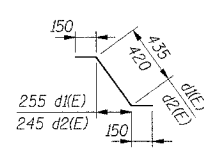
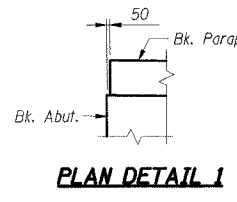
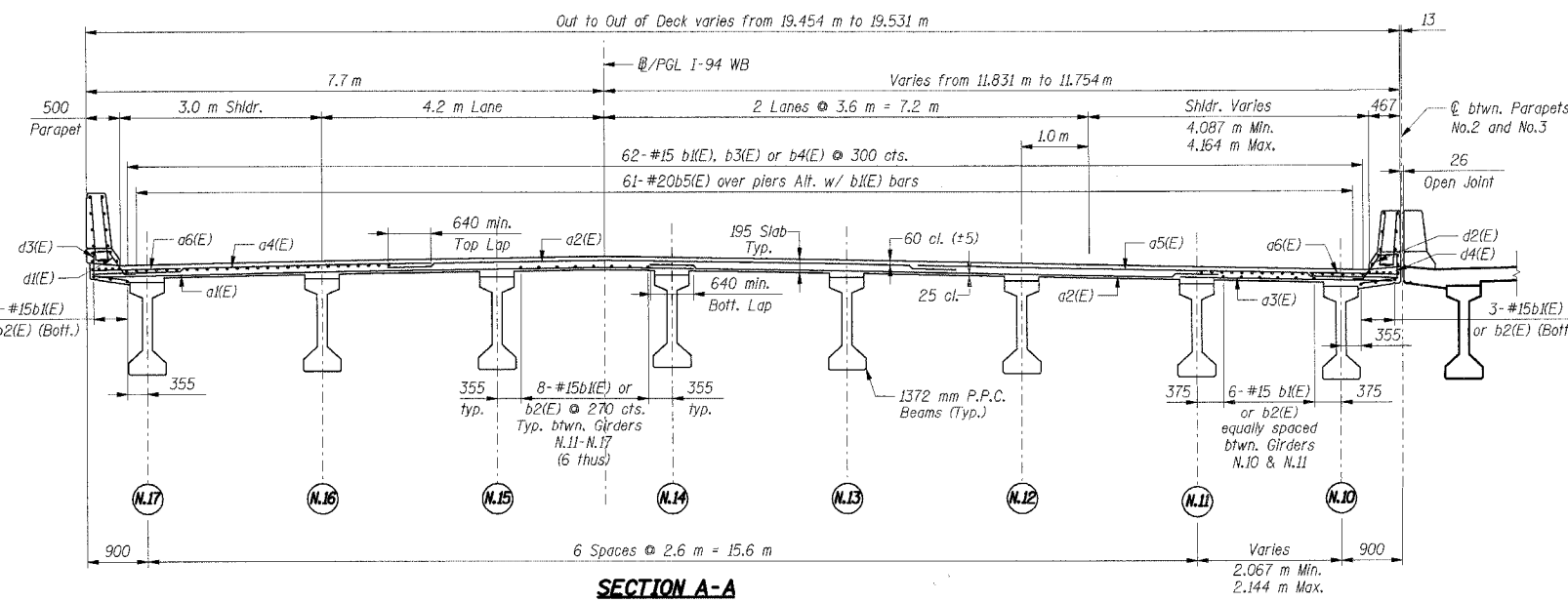
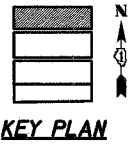
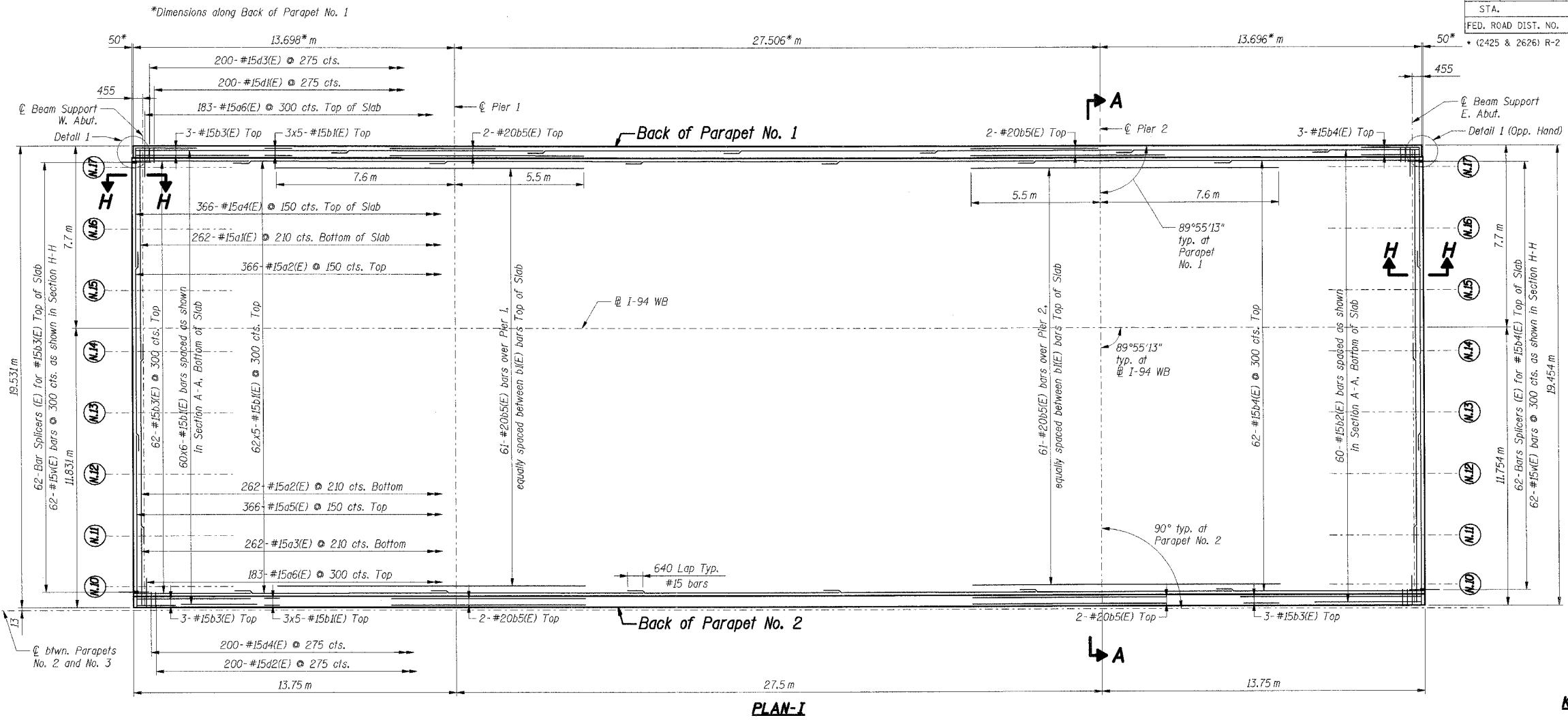


F.A.I. RTE.	SECTION	COUNTY	TOTAL SHEETS	SHEET NO.
80/94	*	COOK	631	396
STA.	TO STA.			
FED. ROAD DIST. NO.	ILLINOIS	FED. AID PROJECT		
	(2425 & 2626) R-2	CONTRACT NO. 62111		



- Notes:**
1. All dimensions are in millimeters (mm) except as noted.
 2. Reinforcement bars designated (E) shall be epoxy coated.
 3. Bars indicated thus 74x10-#15 etc. indicates 74 lines of bars with 10 lengths per line.
 4. For Parapet 1 Elevation, see Sht. RS-35.
 5. For Parapet 2 Elevation, see Sht. RS-36.
 6. For Section H-H, see Sht. RS-28.
 7. For Reinforcement Bar List & Bill of Material, see Sht. RS-34.
 8. Work this Sheet with Shts. RS-25 thru RS-34.
 9. I.F. Denotes Inside Face.
 10. O.F. Denotes Outside Face.
 11. All edges shall have a 20 mm chamfer unless noted otherwise.

THIS SHEET FOR INFORMATION ONLY

SHT. RS-24 OF 70

REVISIONS	NAME	DATE

ILLINOIS DEPARTMENT OF TRANSPORTATION
 F.A.I. ROUTE 80/94 (KINGERY EXPRESSWAY)
 EB & WB INSIDE LANES (MAINLINE) CONSTRUCTION
 I-80/94 OVER RAILROAD AVENUE
 STRUCTURE NO. 016-2792 STA. 6+025.000
 SECTION 1977-121-R
 COOK COUNTY

**DECK PLAN
 DECK CROSS SECTION - I**

DATE: 9/13/05
 DRAWN BY: LAR
 CHECKED BY: MJK

TENG
 TENG & ASSOCIATES, INC.
 ENGINEERS/ARCHITECTS/PLANNERS
 CHICAGO, ILLINOIS

KLUENSTAU
 9-08-2005 15:29:53
 T:\DOCUMENTS\931501\STRUC1\LOGN\SU130324.DGN
 12.3 4.56 78.9 10 11 12 13 14 15 16 17 18 19 20 21 22 23 24 25 26 27 28 29 30 31 32 33 34 35 36 37 38 39 40 41 42 43 44 45 46 47 48 49 50 51 52 53 54 55 56 57 58 59 60 61 62 63