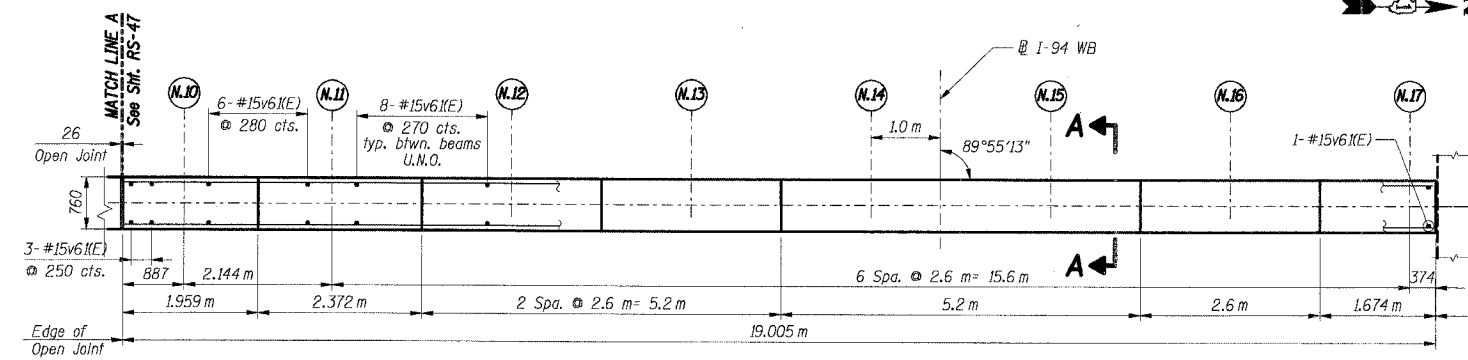
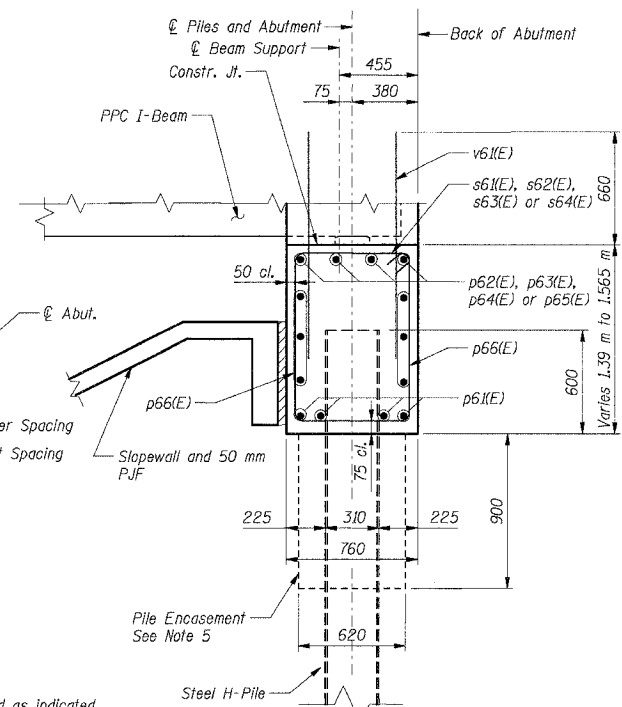


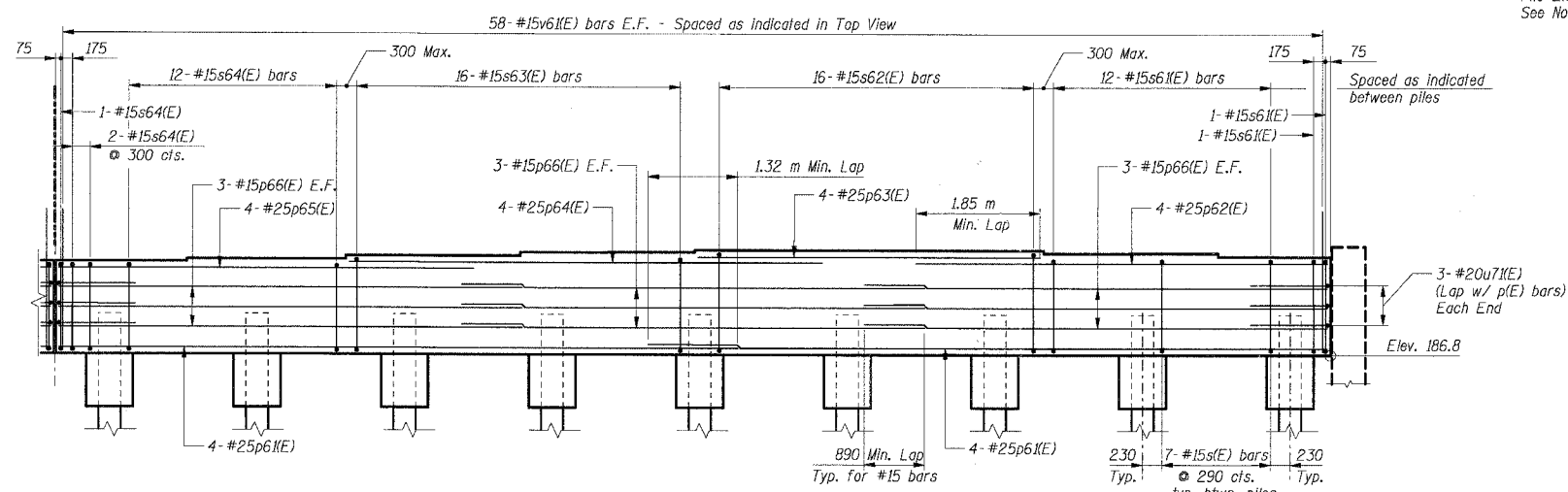
F.A.I. RTE.	SECTION	COUNTY	TOTAL SHEETS	SHEET NO.
80/94	*	COOK	631	418
STA.	TO STA.			
FED. ROAD DIST. NO.	ILLINOIS	FED. AID PROJECT		
			(2425 & 2626) R-2	CONTRACT NO. 62111



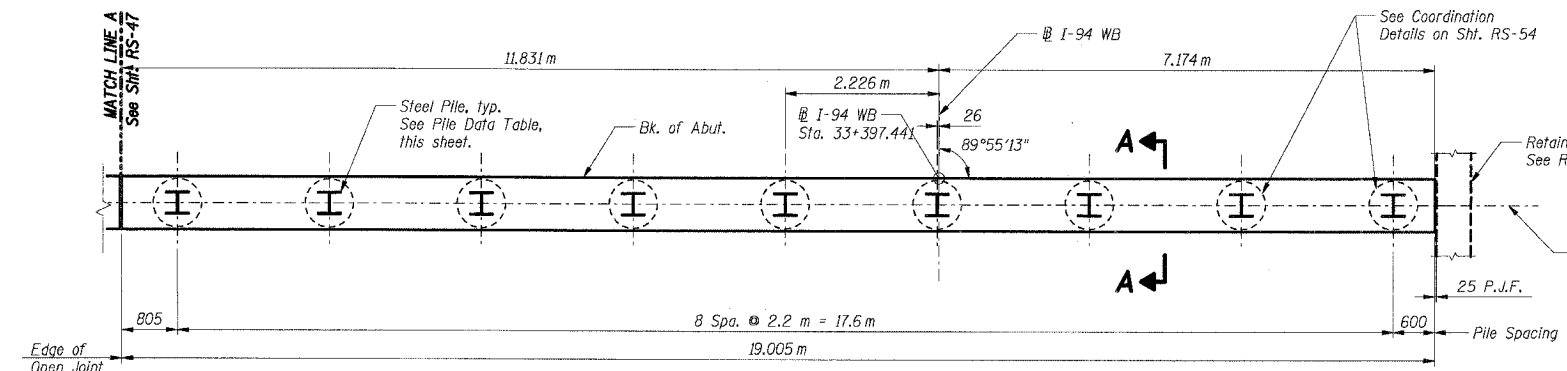
TOP VIEW



SECTION A-A



ELEVATION (Looking West)



FOOTING PLAN

Girder	West Abutment	Steps
N.10	188.190	40
N.11	188.230	50
N.12	188.280	55
N.13	188.335	30
N.14	188.365	0
N.15	188.365	40
N.16	188.325	40
N.17	188.275	50

Bar	A (m)
s6(E)	1.34
s62(E)	1.43
s63(E)	1.35
s64(E)	1.26

Bar	No.	Size	Length (m)	Shape
p6(E)	8	#25	10.12	
p62(E)	4	#25	6.13	
p63(E)	4	#25	5.10	
p64(E)	4	#25	7.05	
p65(E)	4	#25	6.19	
p66(E)	8	#15	6.90	
s6(E)	15	#15	4.28	[]
s62(E)	16	#15	4.46	[]
s63(E)	16	#15	4.30	[]
s64(E)	14	#15	4.12	[]
u7(E)	6	#20	2.85	[]
v6(E)	116	#15	1.32	

Item	Unit	Total
Concrete Structures	Cu m	21.7
Reinforcement Bars, Epoxy Coated	kg	1,590
Structure Excavation	Cu m	2

Type:	HP 310x79
Design Capacity:	600 kN
Required Bearing:	900 kN
Est. Length:	26 m
No. Required:	9



- Notes**
- All dimensions are in millimeters (mm) except as noted.
 - Reinforcement bars designated (E) shall be epoxy coated.
 - E.F. indicates each face.
 - Work this sheet with sheet RS-47.
 - For Pile Encasement details, see sheet RS-3.

THIS SHEET FOR INFORMATION ONLY

NAME	DATE

ILLINOIS DEPARTMENT OF TRANSPORTATION
 F.A.I. ROUTE 80/94 (KINGERY EXPRESSWAY)
 EB & WB INSIDE LANES (MAINLINE) CONSTRUCTION
 I-80/94 OVER RAILROAD AVENUE
 STRUCTURE NO. 016-2792 STA. 6+025.000
 SECTION 1977-121-R
 COOK COUNTY

WEST ABUTMENT PLAN, ELEVATION & SECTION - I

DATE: 7/18/2005
 DRAWN BY: LS
 CHECKED BY: TCU

TENG
 TENG & ASSOCIATES, INC.
 ENGINEERS/ARCHITECTS/PLANNERS
 CHICAGO, ILLINOIS

BAIZEKJ
 7-2-2005, 10:25:55
 I:\DOCUMENTS\STRUCT\DDN\AB173092A.DGN
 12 3 4 56 78 9 10 11 12 13 14 15 16 17 18 19 20 21 22 23 24 25 26 27 28 29 30 31 32 33 34 35 36 37 38 39 40 41 42 43 44 45 46 47 48 49 50 51 52 53 54 55 56 57 58 59 60 61 62 63