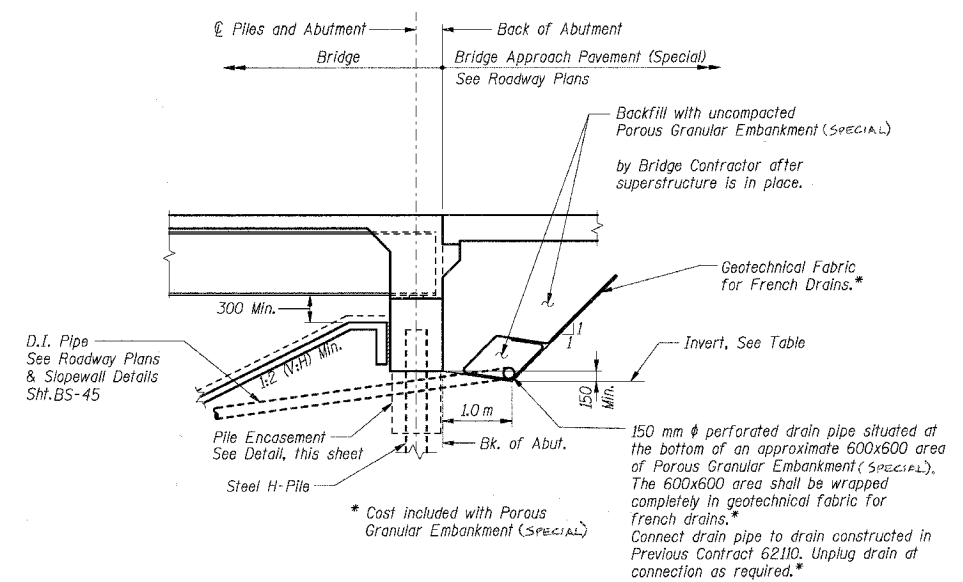


F.A.I. RTE.	SECTION	COUNTY	TOTAL SHEETS	SHEET NO.
80/94	-	COOK	631	445
STA.	TO STA.			
FED. ROAD DIST. NO.	ILLINOIS	FED. AID PROJECT		
* (2425 & 2626) R-2		CONTRACT NO. 62111		

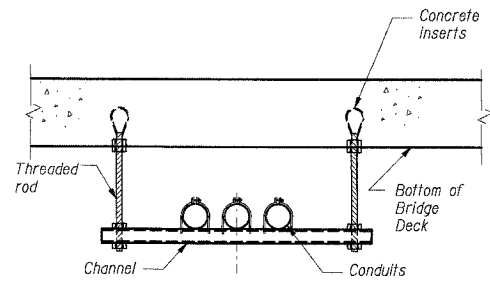
**150 mm ϕ Perforated Drain
Pipe Invert Elevation Table**

Location & Station (ϕ I-80/94)	Offset (m)	Invert Elev.
West Abut. Sta. 6+738.461		
At Wall W849	30.606 LT	186.183
Lowpoint	22.03 LT	186.140
Const. Joint	19.03 LT	186.155
CenterLine I-80/94	0.00	186.250
Lowpoint	17.00 RT	186.165
At Wall W850	28.75 RT	186.224
East Abut. Sta. 6+806.721		
At Wall W852	29.827 LT	186.083
Lowpoint	22.03 LT	186.040
Const. Joint	19.03 LT	186.055
CenterLine I-80/94	0.00	186.150
Lowpoint	17.00 RT	186.065
At Wall W851	27.82 RT	186.119

* D.I. Pipe constructed in Contract 62110 by Others.

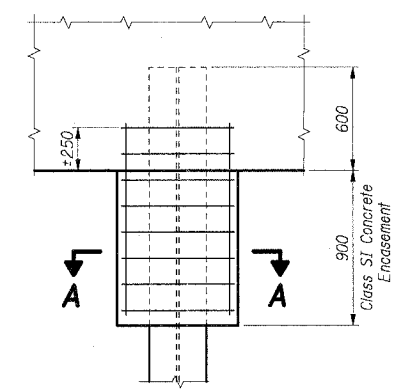


ABUTMENT BACKFILL SECTION

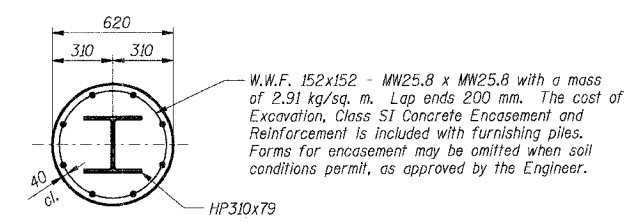


Note: The hanger assemblies including concrete inserts for fiber optic conduits shall be provided as part of the conduit pay items included in Electrical Raceway plans. The cost of installing inserts in the bridge deck shall be included with Concrete Superstructure. Refer to Electrical Raceway plans for limits, numbers and locations of conduits.

HANGER ASSEMBLIES FOR FIBER OPTIC CONDUITS ATTACHED TO BRIDGE DECK



ELEVATION



SECTION A-A

PILE ENCASEMENT AT ABUTMENTS

**STATION 6+772.591
BUILT 200_ BY
STATE OF ILLINOIS
F.A.I. RT. 80/94 SEC. 1977-121-R
LOADING MS-18 & ALT.
STR. NO. 016-2791**

NAME PLATE
See Standard 515001
See Sht. BS-25 for location.

Notes:
1. All dimensions are in millimeters (mm) except as noted.

SHT. BS-3 OF 60

REVISIONS	
NAME	DATE

ILLINOIS DEPARTMENT OF TRANSPORTATION
F.A.I. ROUTE 80/94 (KINGERY EXPRESSWAY)
EB & WB INSIDE LANES (MAINLINE) CONSTRUCTION
I-80/94 OVER BURNHAM AVENUE
STRUCTURE NO. 016-2791 STA. 6+772.591
SECTION 1977-121-R
COOK COUNTY

MISCELLANEOUS DETAILS

DATE: 7/18/2005
DRAWN BY: LS
CHECKED BY: MJK
TENG
TENG & ASSOCIATES, INC.
ENGINEERS/ARCHITECTS/PLANNERS
CHICAGO, ILLINOIS

..\MS99002A.DGN, ..\MS99M2A.DGN, ..\MS05012A.DGN, ..\MS17012A.DGN
 7-12-2005, 10:26:22
 I:\DOCUMENT\931750\STRUCT\90N\MS162A.DGN
 7/23/05 7:56:18 PM
 12 14 15 16 17 18 19 20 21 22 23 24 25 26 27 28 29 30 31 32 33 34 35 36 37 38 39 40 41 42 43 44 45 46 47 48 49 50 51 52 53 54 55 56 57 58 59 60 61 62 63
 RAJTEKKI