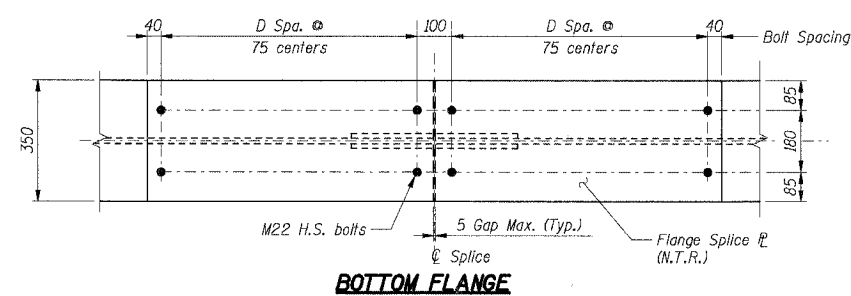
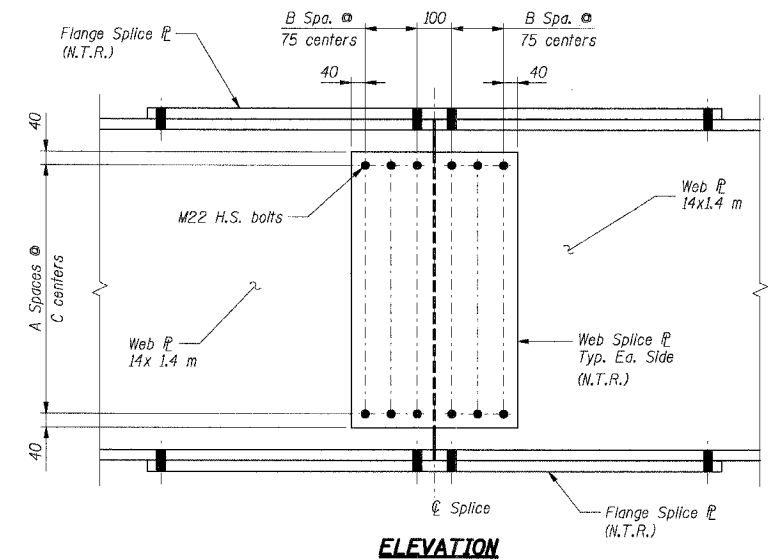
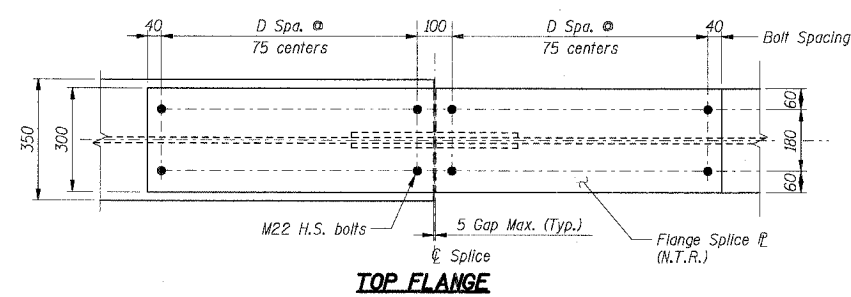


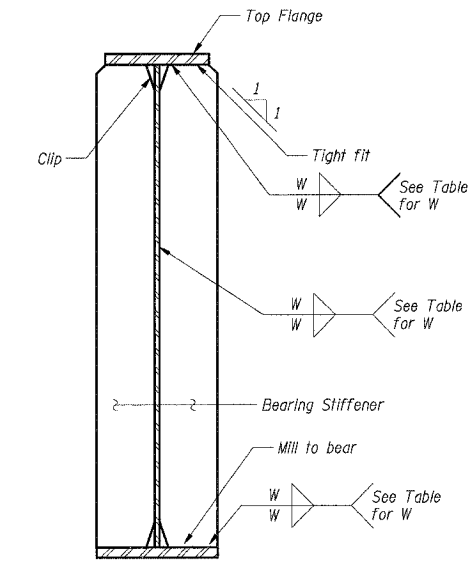
F.A.I. RTE.	SECTION	COUNTY	TOTAL SHEETS	SHEET NO.
80/94		COOK	631	475
STA.	TO STA.			
FED. ROAD DIST. NO.	ILLINOIS	FED. AID PROJECT		
	(2425 & 2626) R-2	CONTRACT NO. 62111		



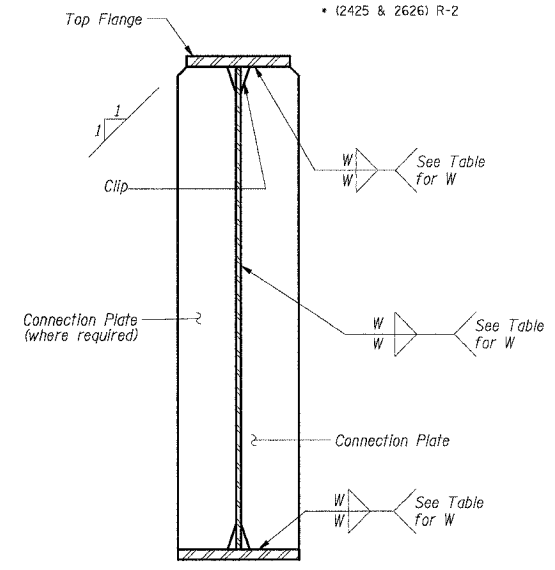
FIELD SPLICE TYPE 1 & 2

FIELD SPLICE TABLE

FIELD SPLICE DESIGNATION	GIRDERS	WEB SPLICE			TOP FLANGE SPLICE			BOTTOM FLANGE SPLICE			
		SPLICE (mm)	A	B	C	SPLICE (mm)	FILL (mm)	D	SPLICE (mm)	FILL (mm)	D
FST-1	N.12, S.12	10x480x1.28 m	12	2	100	30x300x1.98 m	-	12	30x350x1.98 m	-	12
FST-2	N.1 - N.11 & S.1 - S.11	10x480x1.28 m	12	2	100	20x300x1.38 m	-	8	20x350x1.53 m	-	9



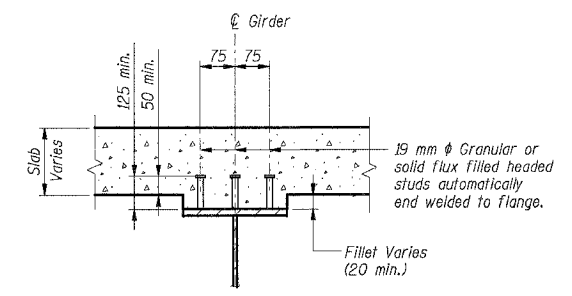
TYPICAL BEARING STIFFENER DETAIL



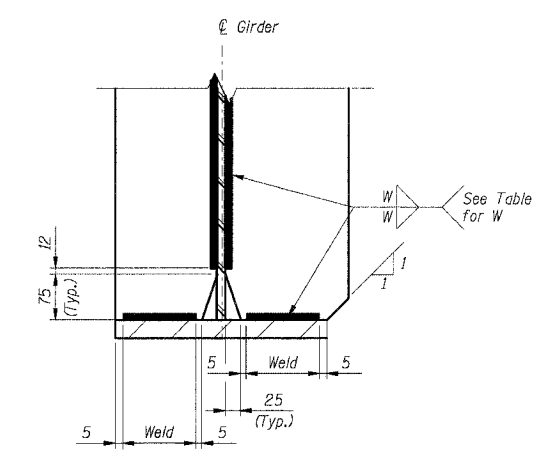
TYPICAL CONNECTION PLATE DETAIL

WELD SIZES "W"

Thickness "T" of Thicker (mm) to be Joined	Min. Size of Fillet Weld
T < 20	6
T > 20	8



SHEAR CONNECTOR DETAIL



TYPICAL END OF BEARING STIFFENER OR CONNECTION PLATE DETAIL

- Notes:**
- All dimensions are in millimeters (mm) except as noted.
 - All steel shown on this sheet shall be AASHTO M 270M Grade 345, except fill plates which can be Grade 250.
 - N.T.R. denotes steel subject to Supplemental Requirements for Notch Toughness (Zone 2).
 - All bolts shall be M22 AASHTO M 164M bolts unless noted otherwise.

ILLINOIS DEPARTMENT OF TRANSPORTATION
 F.A.I. ROUTE 80/94 (KINGERY EXPRESSWAY)
 EB & WB INSIDE LANES (MAINLINE) CONSTRUCTION
 I-80/94 OVER BURNHAM AVENUE
 STRUCTURE NO. 016-2791 STA. 6+772.591
 SECTION 1977-121-R
 COOK COUNTY

SHT. BS-33 OF 60

REVISIONS	
NAME	DATE

STEEL DETAILS - II

DATE: 7/18/2005
 DRAWN BY: NK
 CHECKED BY: TCU

TENG
 TENG & ASSOCIATES, INC.
 ENGINEERS/ARCHITECTS/PLANNERS
 CHICAGO, ILLINOIS

I:\DOCUMENTS\931560\STRUCT\CON\ST176052A.DGN
 7-12-2005, 10:26:46
 2 3 4 5 6 7 8 9 10 11 12 13 14 15 16 17 18 19 20 21 22 23 24 25 26 27 28 29 30 31 32 33 34 35 36 37 38 39 40 41 42 43 44 45 46 47 48 49 50 51 52 53 54 55 56 57 58 59 60 61 62 63
 BAUZEKU
 1-15-99 02A.DGN
 1-15-99 02A.DGN