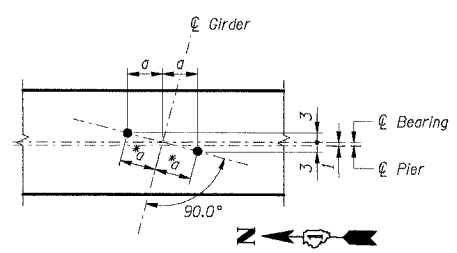
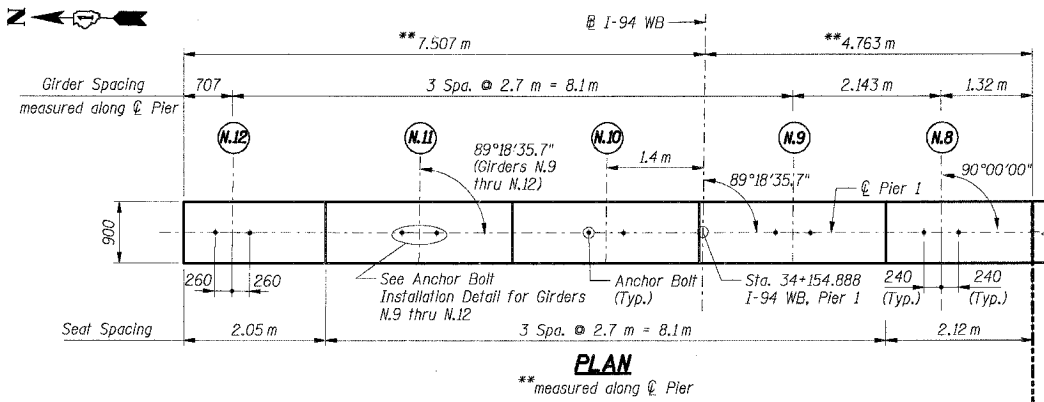


F.A.I. RTE.	SECTION	COUNTY	TOTAL SHEETS	SHEET NO.
80/94		COOK	631	488
STA.	TO STA.			
FED. ROAD DIST. NO.	ILLINOIS	FED. AID PROJECT		
• (2425 & 2626) R-2		CONTRACT NO. 62111		

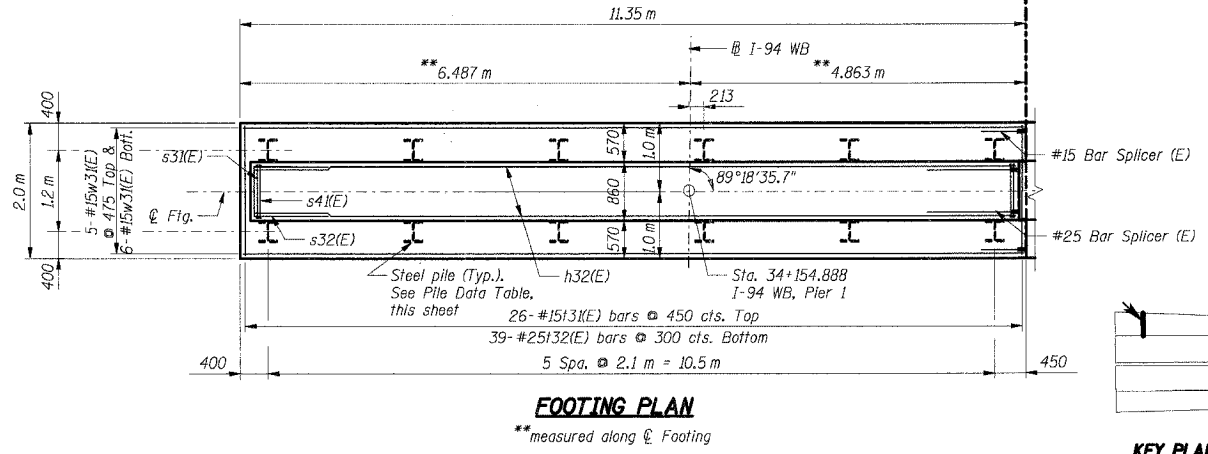
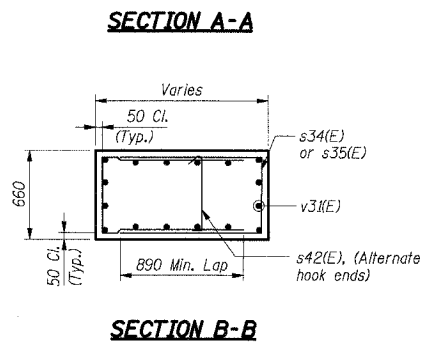
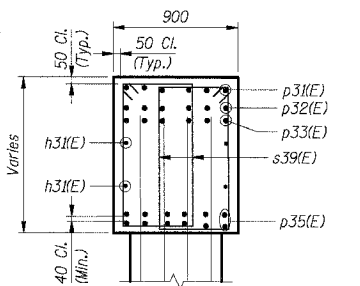
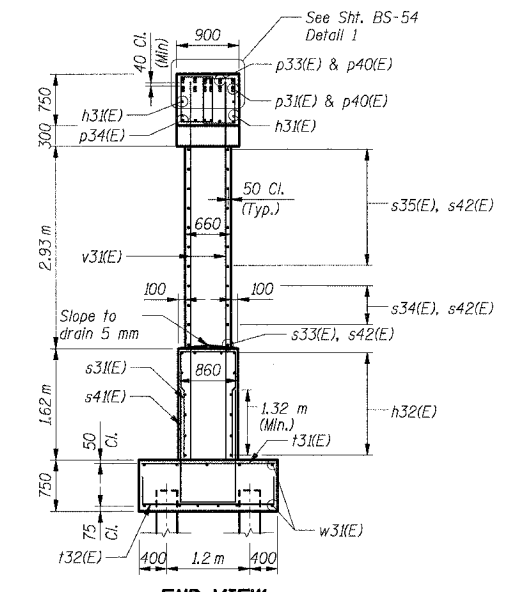
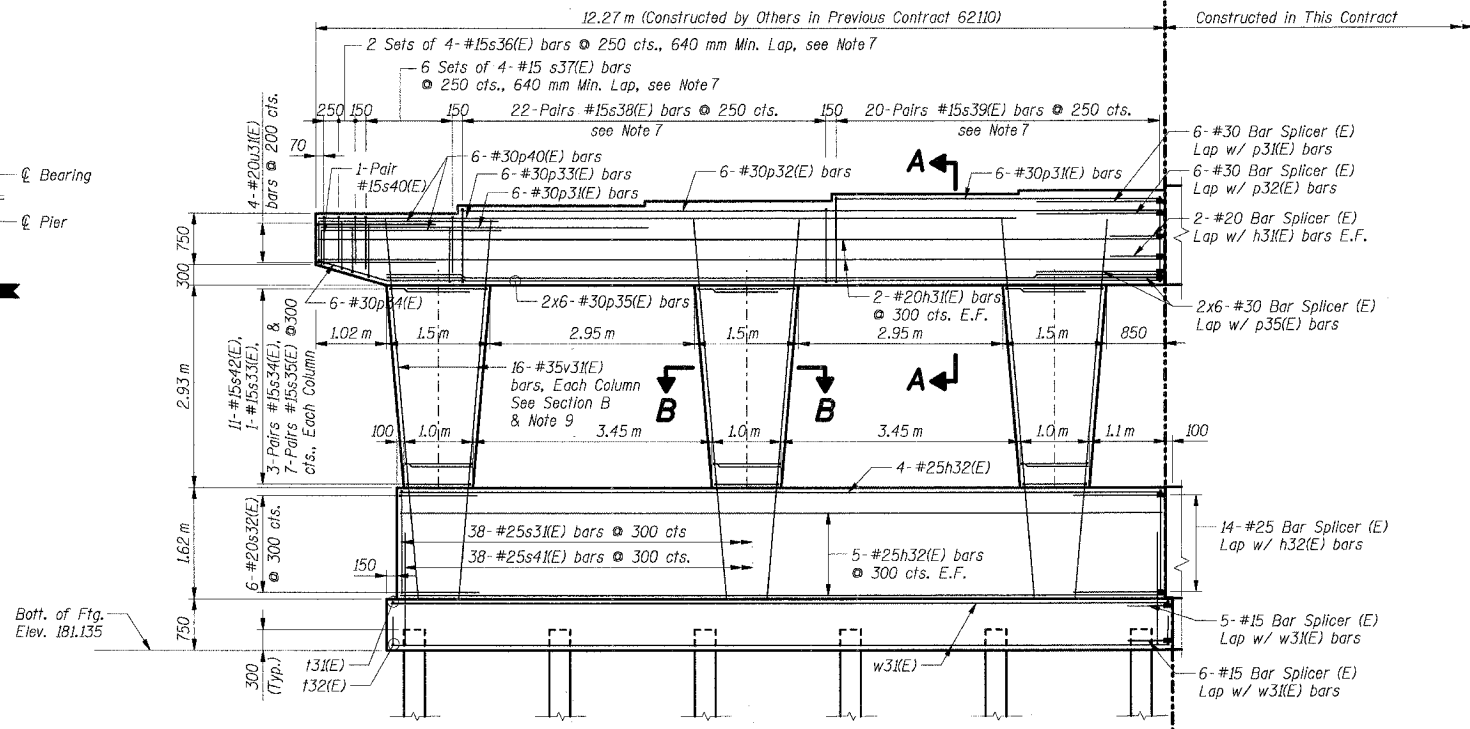
Girders	Elevations
N.12	187.485
N.11	187.595
N.10	187.660
N.9	187.765
N.8	187.820



**ANCHOR BOLT INSTALLATION DETAIL**  
(Girders N.9 thru N.12)

\* a = 260 mm for Girder N.12,  
240 mm for Girders N.9 thru N.11

a = 260 mm for Girder N.12,  
240 mm for Girders N.9 thru N.11



**THIS SHEET FOR INFORMATION ONLY**

SHT. BS-46 OF 60

REVISIONS	
NAME	DATE

**PILE DATA**

Type: HP 310 x 79  
Design Capacity: 600 kN  
Required Bearing: 900 kN  
Est. Length: 22 m  
No. Required: 12

- Notes:**
- All dimensions are in millimeters (mm) except as noted.
  - Reinforcement bars designated (E) shall be epoxy coated.
  - E.F. indicates Each Face.
  - All edges shall have 20 mm chamfers except as noted.
  - For bar splicer details see Sht. BS-56.
  - Work this sheet with Sht. BS-54.
  - Space reinforcement in cap to miss anchor bolts.
  - For Anchor Bolt details see Sht. BS-35.
  - All column "v" bars shall be firmly tied and fixed in position prior to casting crashwall portion of pier.

ILLINOIS DEPARTMENT OF TRANSPORTATION  
F.A.I. ROUTE 80/94 (KINGERY EXPRESSWAY)  
EB & WB INSIDE LANES (MAINLINE) CONSTRUCTION  
I-80/94 OVER BURNHAM AVENUE  
STRUCTURE NO. 016-2791 STA. 6+772.591  
SECTION 1977-121-R  
COOK COUNTY

**PIER 1  
PLAN, ELEVATION & SECTION - I**

DATE: 7/18/2005  
DRAWN BY: NK  
CHECKED BY: TCU

**TENG**  
TENG & ASSOCIATES, INC.  
ENGINEERS/ARCHITECTS/PLANNERS  
CHICAGO, ILLINOIS

\P199M652A.DGN, \P199M652A.DGN, \P199M652A.DGN, \P199M652A.DGN, \P199M652A.DGN  
 I:\DOCUMENTS\1997\STRUCT\STRUCT\08\PIER1\PIER1.DGN  
 7-12-2005, 10:56:57  
 2,234,561,18,910,11,12,13,14,15,16,17,18,19,20,21,22,23,24,25,26,27,28,29,30,31,32,33,34,35,36,37,38,39,40,41,42,43,44,45,46,47,48,49,50,51,52,53,54,55,56,57,58,59,60,61,62,63