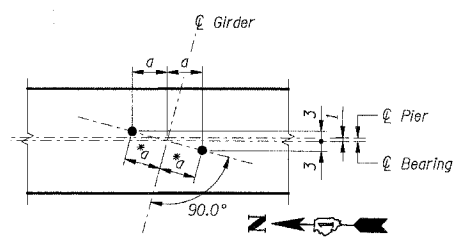
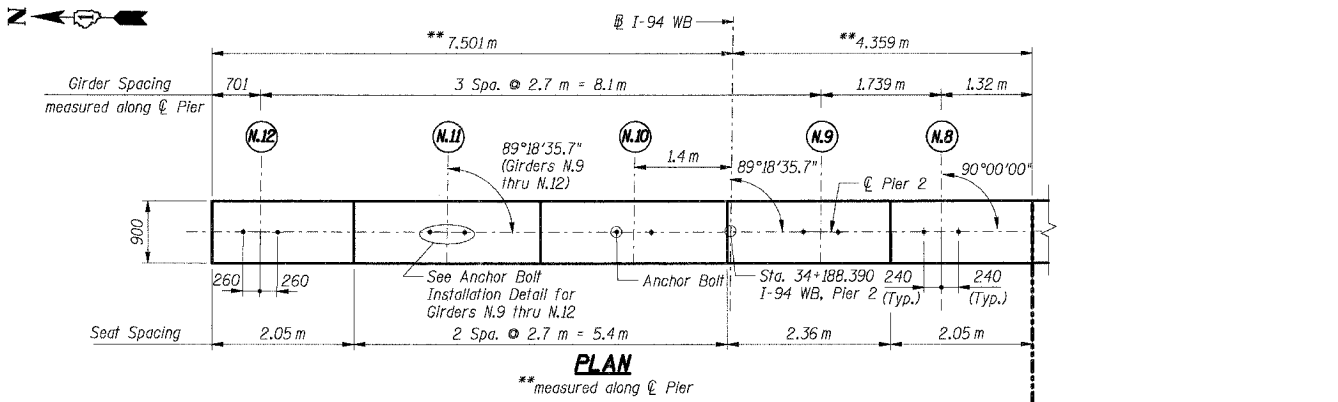


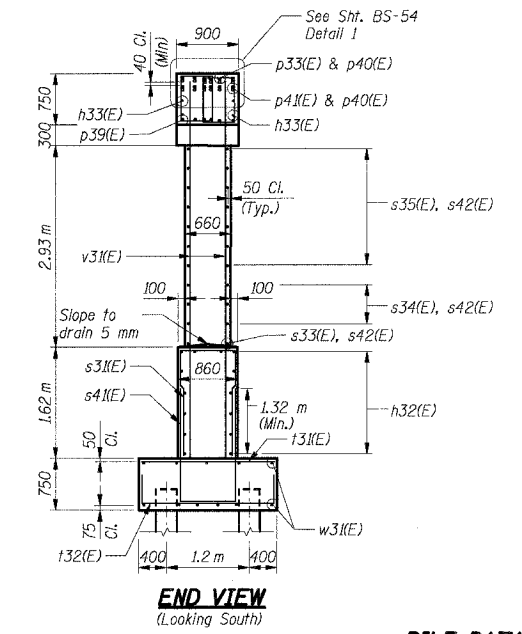
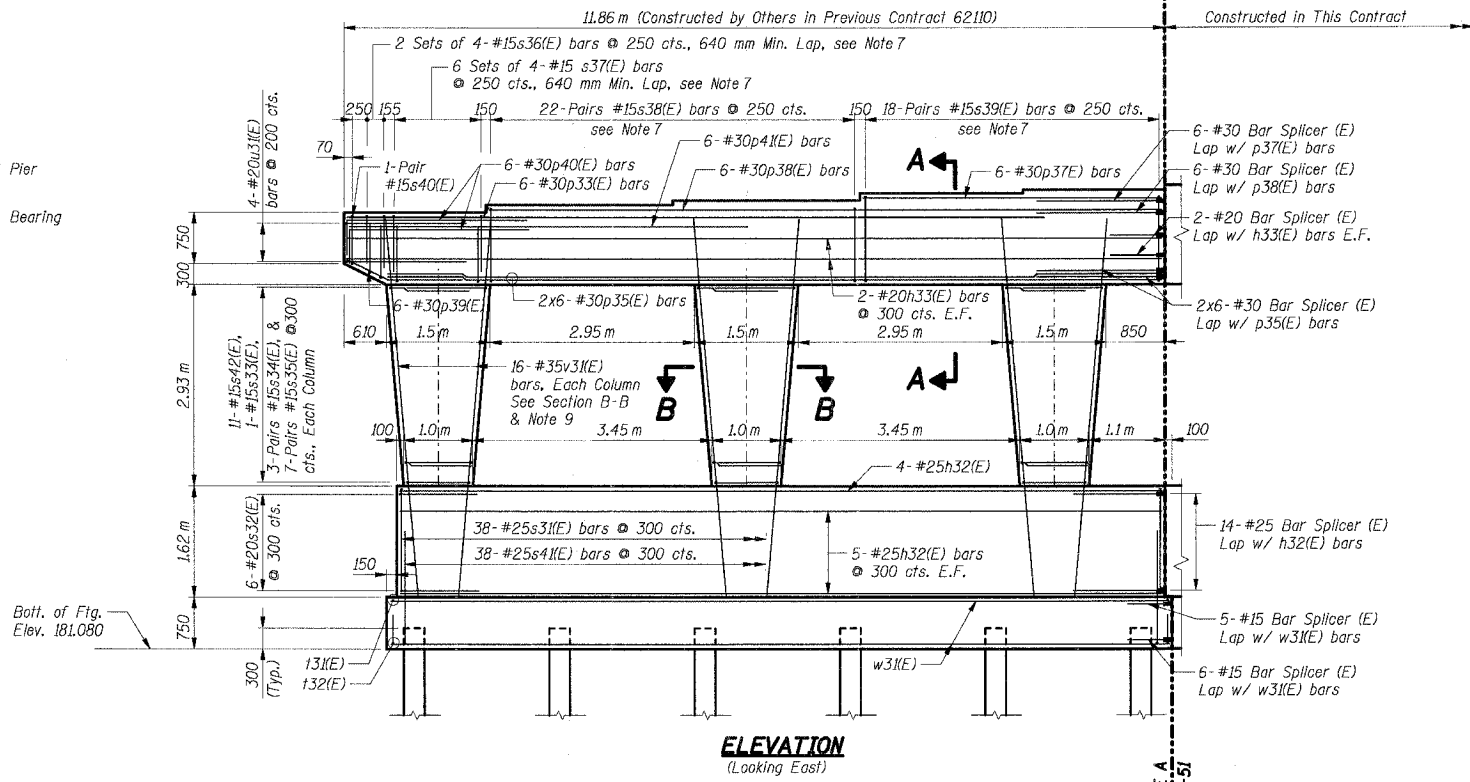
F.A.I. R.T.E.	SECTION	COUNTY	TOTAL SHEETS	SHEET NO.
80/94		COOK	631	492
STA.	TO STA.			
FED. ROAD DIST. NO.	ILLINOIS	FED. AID PROJECT		
• (2425 & 2626) R-2		CONTRACT NO. 62111		

Girders	Elevations
N.12	187.430
N.11	187.540
N.10	187.605
N.9	187.710
N.8	187.760



* a = 260 mm for Girder N.12,
240 mm for Girders N.9 thru N.11

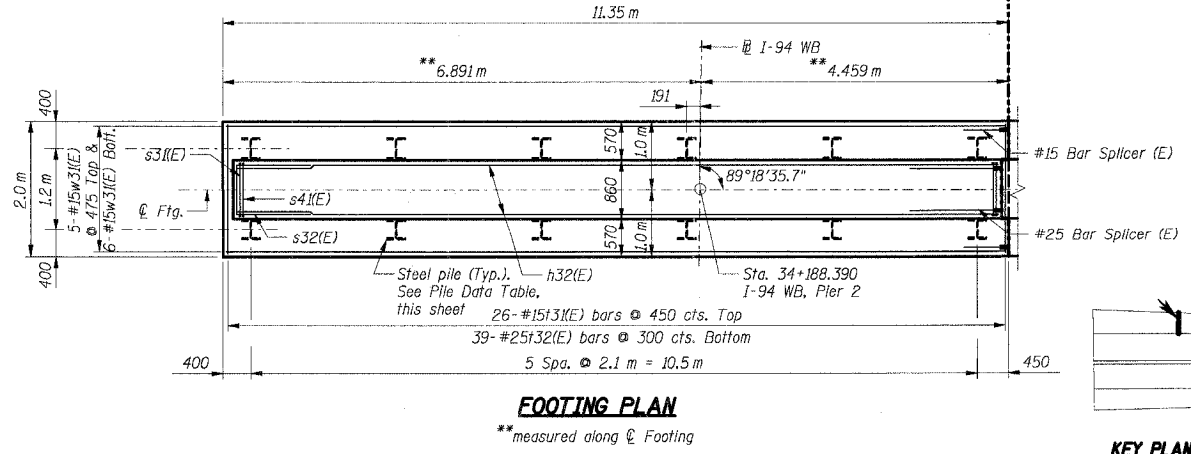
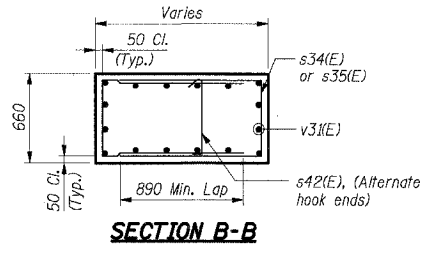
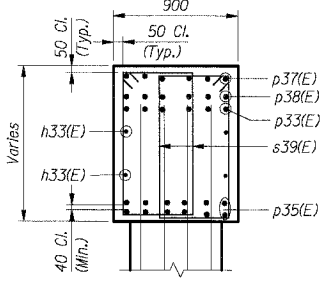
a = 260 mm for Girder N.12,
240 mm for Girders N.9 thru N.11



PILE DATA

Type: HP 310 x 79
Design Capacity: 600 kN
Required Bearing: 900 kN
Est. Length: 23 m
No. Required: 11 + 1 Test Pile

- Notes:**
- All dimensions are in millimeters (mm) except as noted.
 - Reinforcement bars designated (E) shall be epoxy coated.
 - E.F. indicates Each Face.
 - All edges shall have 20 mm chamfers except as noted.
 - For bar splicer details see Sht. BS-56.
 - Work this sheet with Sht. BS-54.
 - Space reinforcement in cap to miss anchor bolts.
 - For Anchor Bolt details see Sht. BS-35.
 - All column "v" bars shall be firmly tied and fixed in position prior to casting crashwall portion of pier.



**THIS SHEET FOR
INFORMATION ONLY**

SHT. BS-50 OF 60

REVISIONS	
NAME	DATE

ILLINOIS DEPARTMENT OF TRANSPORTATION
F.A.I. ROUTE 80/94 (KINGERY EXPRESSWAY)
EB & WB INSIDE LANES (MAINLINE) CONSTRUCTION
1-80/94 OVER BURNHAM AVENUE
STRUCTURE NO. 016-2791 STA. 6+772.591
SECTION 1977-121-R
COOK COUNTY

**PIER 2
PLAN, ELEVATION & SECTION - I**

DATE: 7/18/2005
DRAWN BY: NK
CHECKED BY: TCU

TENG
TENG & ASSOCIATES, INC.
ENGINEERS/ARCHITECTS-PLANNERS
CHICAGO, ILLINOIS

V:\P9596124.DWG, V:\P9596124.DWG, V:\P9596124.DWG, V:\P9596124.DWG
7-12-2005, 08:27:00
2,234,556, 18,910, 12, 13, 14, 15, 16, 17, 18, 19, 20, 21, 22, 23, 24, 25, 26, 27, 28, 29, 30, 31, 32, 33, 34, 35, 36, 37, 38, 39, 40, 41, 42, 43, 44, 45, 46, 47, 48, 49, 50, 51, 52, 53, 54, 55, 56, 57, 58, 59, 60, 61, 62, 63