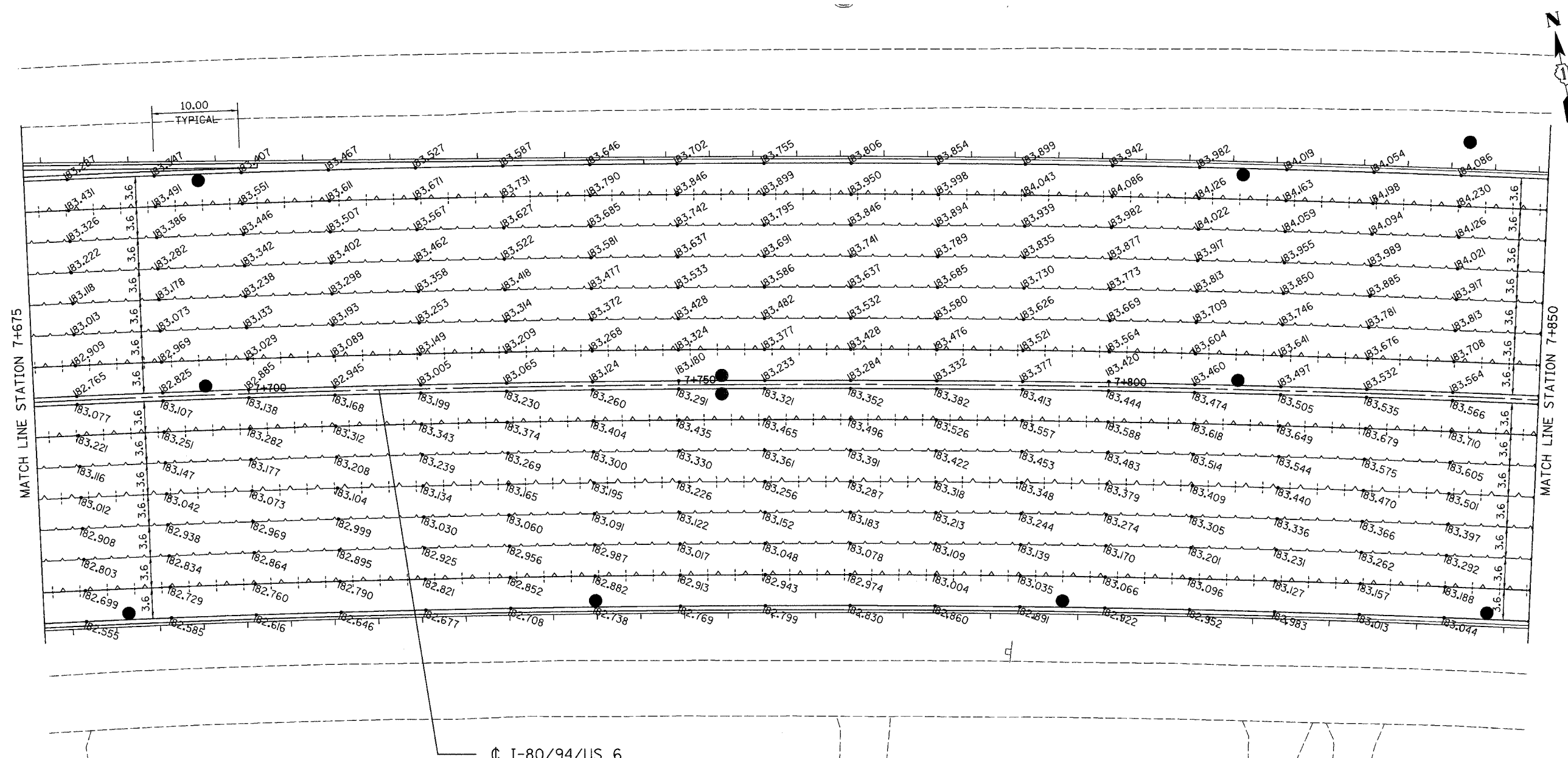
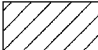


ALL DIMENSIONS IN METERS EXCEPT PAY ITEMS AND UNLESS NOTED OTHERWISE

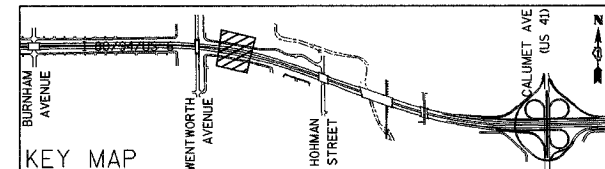
F.A.I. RTE.	SECTION	COUNTY	TOTAL SHEETS	SHEET NO.
80/94	2626,2-R-2	COOK/LAKE	1207	135
STA.	TO STA.			
FED. ROAD DIST. NO.	ILLINOIS	FED. AID PROJECT		
CONTRACT NO. 62114	INDOT DES. NO. 0100987			



LEGEND

• xxx.xxx	PAVEMENT ELEVATION (METERS)
~ ~ ~	LONGITUDINAL JOINT
+ + +	LONGITUDINAL CONSTRUCTION JOINT
- - -	PAVEMENT SWALE
	EXISTING PAVEMENT BY CONTRACT 62113

⊕ I-80/94/US 6



REVISIONS	
NAME	DATE

ILLINOIS DEPARTMENT OF TRANSPORTATION
 I-80/94/US 6 (KINGERY EXPRESSWAY)
 BURNHAM ROAD TO US 41 (CALUMET AVE)
PAVEMENT JOINTS AND ELEVATIONS
I-80/94/US 6
STA 7+675 TO STA 7+850
 SCALE 1:250 DRAWN BY ACE/CAD
 DATE 07/05 CHECKED BY TAE

