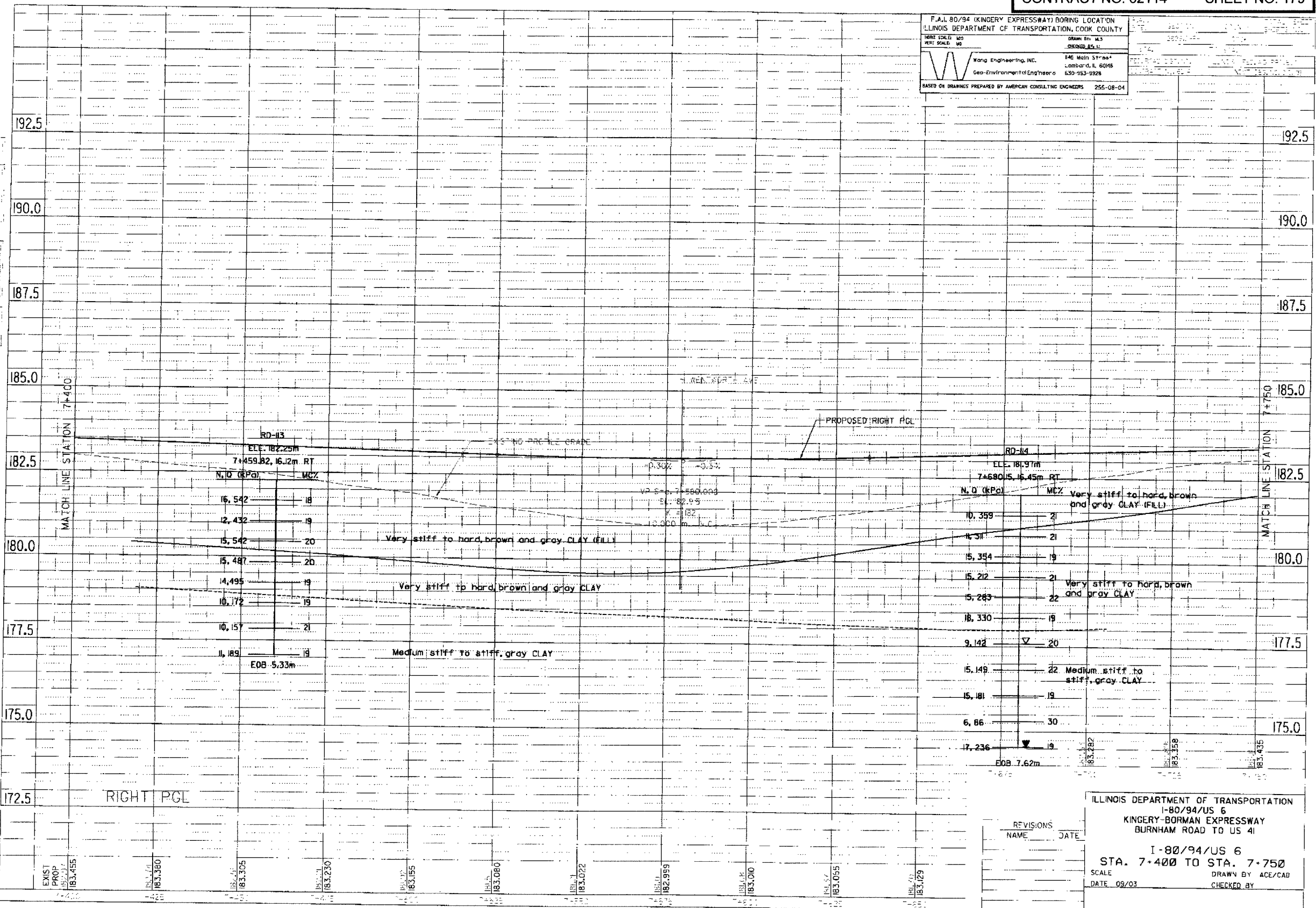


F.A.I. 80/94 (KINGERY EXPRESSWAY) BORING LOCATION
 ILLINOIS DEPARTMENT OF TRANSPORTATION, COOK COUNTY
 HORIZ SCALE: 1"=40'
 VERT SCALE: 1"=10'
 DRAWN BY: M.S.
 CHECKED BY: L.L.
 Wang Engineering, Inc.
 146 Main Street
 Lombard, IL 60148
 Geo-Environmental Engineers
 630-953-9928
 BASED ON DRAWINGS PREPARED BY AMERICAN CONSULTING ENGINEERS 255-08-04

FINAL SURVEYED
 SURVEY PLOTTED
 NORTH BOUND
 AREAS CHECKED
 BY: [Signature]

ORIGINAL SURVEYED
 SURVEY PLOTTED
 NORTH BOUND
 AREAS CHECKED
 BY: [Signature]



REVISIONS	NAME	DATE

ILLINOIS DEPARTMENT OF TRANSPORTATION
 I-80/94/US 6
 KINGERY-BORMAN EXPRESSWAY
 BURNHAM ROAD TO US 41
 I-80/94/US 6
 STA. 7-400 TO STA. 7-750
 SCALE: DRAWN BY ACE/CAD
 DATE 09/03 CHECKED BY