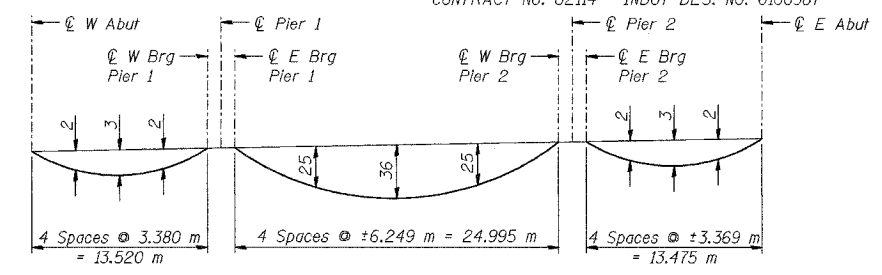
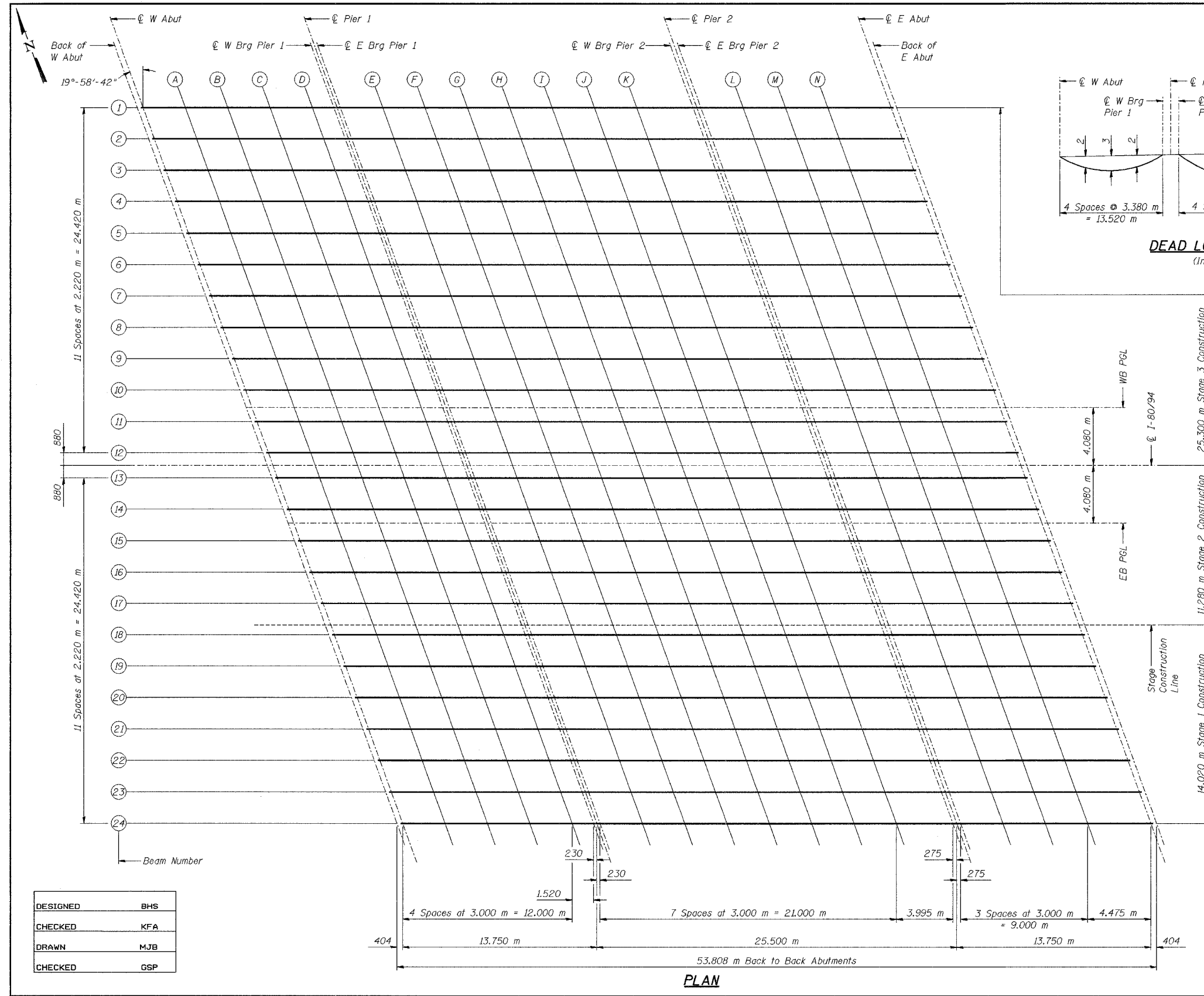


|           |            |                      |        |   |               |
|-----------|------------|----------------------|--------|---|---------------|
| ROUTE NO. | SECTION    | COUNTY               | SHEETS | SHEET                                     | SHEET NO. S-7 |
| F.A.L.    | 2626.2-R-2 | LAKE COUNTY, INDIANA | 1207   | 586                                       | 40 SHEETS     |
| ILLINOIS  |            | FED. AID PROJECT     |        | CONTRACT NO. 62114 INDOT DES. NO. 0100987 |               |



**DEAD LOAD DEFLECTION DIAGRAM**  
(Includes weight of concrete only)

NOTE: The above deflections are not to be used in the field if the engineer is working from the grade elevations adjusted for dead load deflections.

NOTES:  
All dimensions are in millimeters (mm) except as noted.

|          |     |
|----------|-----|
| DESIGNED | BHS |
| CHECKED  | KFA |
| DRAWN    | MJB |
| CHECKED  | GSP |

ILLINOIS DEPARTMENT OF TRANSPORTATION  
F.A.L. ROUTE 80/94 (BORMAN EXPRESSWAY)  
OVER HOHMAN AVENUE

**TOP OF DECK ELEVATIONS - LAYOUT**  
**SECTION 2626.2-R-2**  
**LAKE COUNTY, INDIANA**  
**STATION 8+225.132**  
**STRUCTURE NO. I-80-1-8459 (EB & WB)**  
DATE 09/05 (016-1001 & 016-1002)

**AMERICAN**  
CONSULTING ENGINEERS

**PLAN**