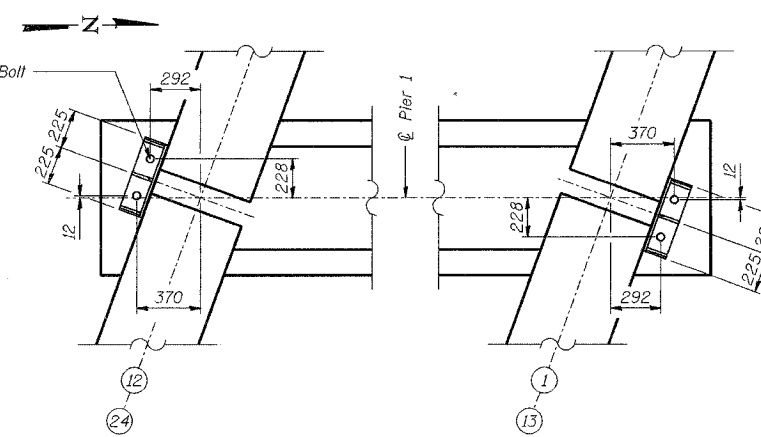


Equivalent rolled angle with stiffeners will be allowed in lieu of welded plates. (4 Required at Fixed Pier 1) (Cost included with Concrete, C, Superstructure)

Ø M36 x 450 mm Anchor Bolt with 75 x 75 x 8 mm 1/2" washer under nut. Holes in cap to be drilled after bears are in place (Typ)



(Cost included with Concrete, C, Superstructure)

- NOTES:**
- See Sheet No S-18 for diaphragm at Pier 1.
 - See Sheet No S-21 for reinforcement diagrams and Bill of Material.
 - See Sheet No S-22 for location of interior diaphragms.
 - Concrete in diaphragm is included with Concrete, C, Superstructure.
 - Reinforcement bars designated (E) shall be epoxy coated.
 - All concrete edges shall have a 20 mm chamfer.
 - All dimensions are in millimeters (mm) except as noted.

| | |
|----------|-----|
| DESIGNED | BHS |
| CHECKED | KFA |
| DRAWN | MJB |
| CHECKED | GSP |

LEGEND
EF - Each Face

ILLINOIS DEPARTMENT OF TRANSPORTATION
F.A.L. ROUTE 80/94 (BORMAN EXPRESSWAY)
OVER HOHMAN AVENUE

INTERIOR DIAPHRAGMS & DETAILS
SECTION 2626.2-R-2
LAKE COUNTY, INDIANA
STATION 8+225.132
STRUCTURE NO. I-80-1-8459 (EB & WB)
DATE 09/05 (016-1001 & 016-1002)

AMERICAN
CONSULTING ENGINEERS