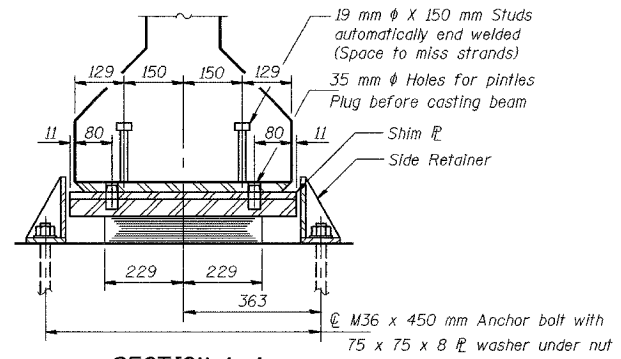


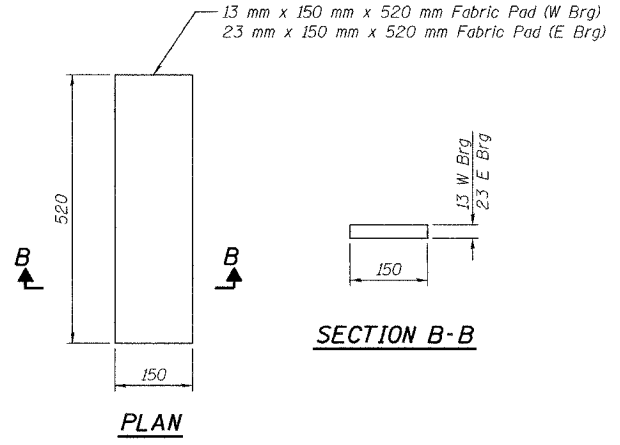
SECTION AT PIER 2



SECTION A-A

TYPE I ELASTOMERIC EXP. BRG.

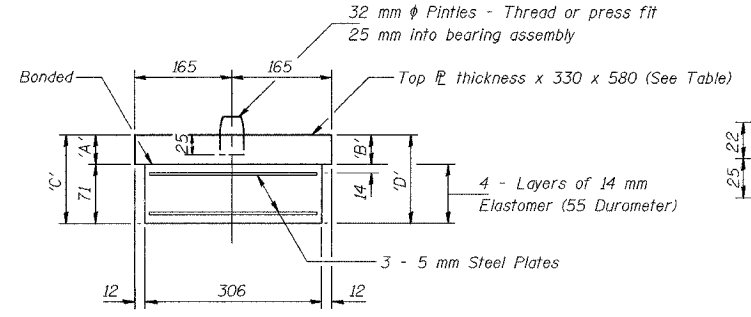
Notes: After beams have been erected holes at expansion bearings shall be drilled and anchor bolts grouted in place. See Sheet S-26 for anchor bolt installation. All dimensions are in millimeters (mm) except as noted.



PLAN

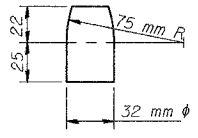
FABRIC PAD AT PIER 1

(Cost included with Concrete, C. Superstructure)



BEARING ASSEMBLY

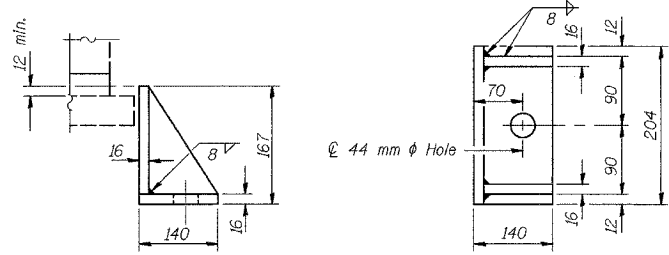
(Looking North)
Note: Shim plates shall not be placed under Bearing Assembly.



PINTLE

BEARING ASSEMBLY DIMENSIONS

Location	'A'	'B'	'C'	'D'
W Brg - Beams 13 thru 24	65	65	136	136
E Brg - Beams 13 thru 24	77	77	136	136
W Brg - Beams 1 thru 12	65	72	136	143
E Brg - Beams 1 thru 12	77	84	148	155



SIDE RETAINER

Equivalent rolled angle with stiffeners will be allowed in lieu of welded plates. (Cost included with Elastomeric Bearing Assembly, Type I)

DESIGNED	BHS
CHECKED	KFA
DRAWN	MJB
CHECKED	GSP

PI-2E-1 (M) 9-1-03

BILL OF MATERIAL

Item	Unit	Total
Elastomeric Bearing Assembly, Type I	Each	48

ILLINOIS DEPARTMENT OF TRANSPORTATION
F.A.L. ROUTE 80/94 (BORMAN EXPRESSWAY)
OVER HOHMAN AVENUE

BEARING DETAILS
SECTION 2626.2-R-2
LAKE COUNTY, INDIANA
STATION 8+225.132
STRUCTURE NO. I-80-1-8459 (EB & WB)
DATE 09/05 (016-1001 & 016-1002)

