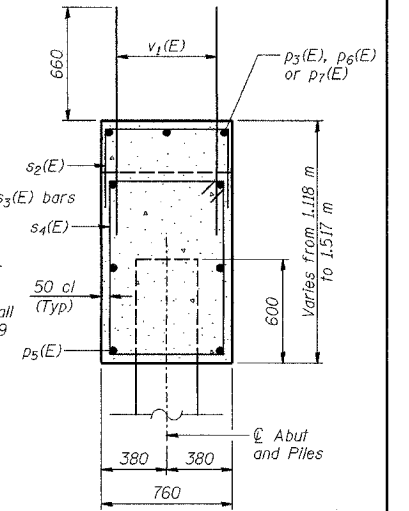


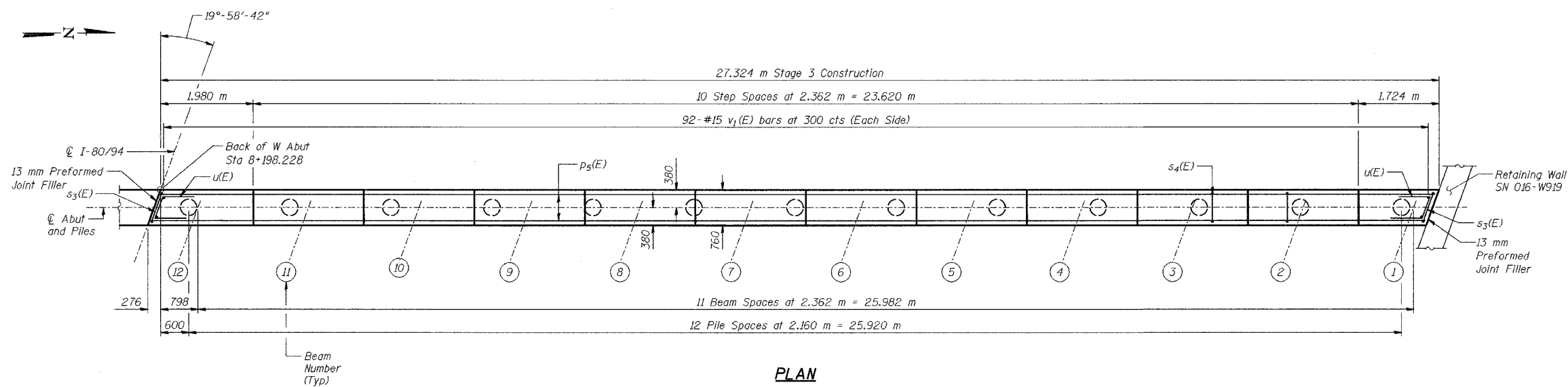
ELEVATION
(Looking West)



SECTION A-A

PILE DATA

Type - 356 ϕ Metal Shell
Capacity - 500 kN
Est Length - 17.0 m
* Est Length - 18.8 m
No Reqd - 13
Test Piles - 0



PLAN

BEARING SEAT ELEVATIONS

Beam	ϕ W Abut
1	186.118
2	186.191
3	186.265
4	186.338
5	186.402
6	186.460
7	186.497
8	186.517
9	186.497
10	186.475
11	186.444
12	186.406

DESIGNED	BHS
CHECKED	KFA
DRAWN	MJB
CHECKED	GSP

NOTES:

See Sheet No S-31 for reinforcement details and Bill of Material.
See Sheet No S-36 for concrete pile details.
Pour steps monolithically with cap.
Reinforcement bars designated (E) shall be epoxy coated.
Bars indicated thus 20 x 3-#15 etc. indicates 20 lines of bars with 3 lengths per line.
All dimensions are in millimeters (mm) except as noted.
All edges shall have standard 20 mm chamfers except as noted.
Cost of 13 mm Preformed Joint Filler Included with Concrete, A, Substructure.
* For the 3 northernmost piles, which are outside the Limits of Existing Structure.

MINIMUM BAR LAPS

#15 bars = 640
#20 bars = 790
#30 bars = 1850

ILLINOIS DEPARTMENT OF TRANSPORTATION
F.A.L. ROUTE 80/94 (BORMAN EXPRESSWAY)
OVER HOHMAN AVENUE

WEST ABUTMENT - WESTBOUND
SECTION 2626.2-R-2
LAKE COUNTY, INDIANA
STATION 8+225.132
STRUCTURE NO. I-80-1-8459 (EB & WB)
DATE 09/05 (016-1001 & 016-1002)

AMERICAN
CONSULTING ENGINEERS