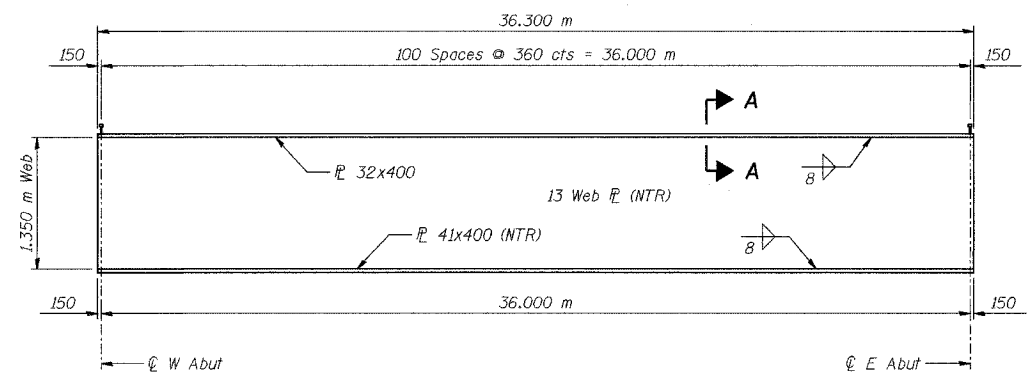


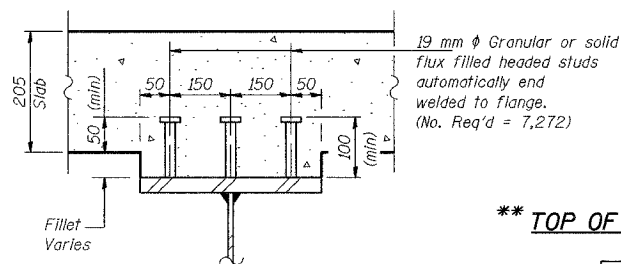
DESIGNED	BHS
CHECKED	KFA
DRAWN	MJB
CHECKED	GSP

FRAMING PLAN



GIRDER ELEVATION

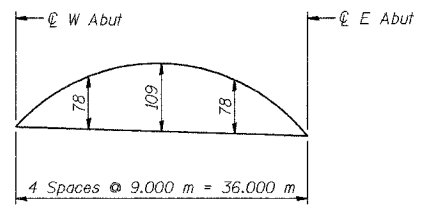
All structural steel on this sheet shall be AASHTO M 270M Grade 345W.



SECTION A-A

**** TOP OF WEB ELEVATION TABLE**
(For Fabrication Use Only)

Girder	℄ W Abut	℄ E Abut
1	189.106	188.236
2	189.159	188.287
3	189.211	188.339
4	189.263	188.390
5	189.315	188.441
6	189.368	188.493
7	189.420	188.544
8	189.472	188.596
9	189.525	188.647
10	189.577	188.699
11	189.629	188.750
12	189.682	188.802
13	189.088	188.211
14	189.140	188.263
15	189.192	188.314
16	189.245	188.366
17	189.297	188.418
18	189.349	188.469
19	189.402	188.521
20	189.454	188.572
21	189.507	188.624
22	189.559	188.676
23	189.611	188.727
24	189.664	188.779



**** CAMBER DIAGRAM**

NOTES:
See Sheet No. S-16 for cross frame details and table of moments and shears.
All dimensions are in millimeters (mm) except as noted.
NTR denotes notch toughness requirements.
* Measured radial to ℄ I-80/94.

**** FOR INFORMATION ONLY**

ILLINOIS DEPARTMENT OF TRANSPORTATION
F.A.L. ROUTE 80/94 (BORMAN EXPRESSWAY)
OVER HARRISON AVENUE

FRAMING PLAN
SECTION 2626.2-R-2
LAKE COUNTY, INDIANA
STATION 8+754.874
STRUCTURE NO. I-80-1-8461 (EB & WB)
DATE 09/05 (016-1005 & 016-1006)

AMERICAN
CONSULTING ENGINEERS