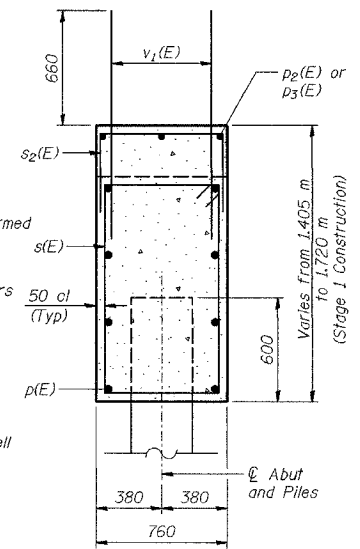
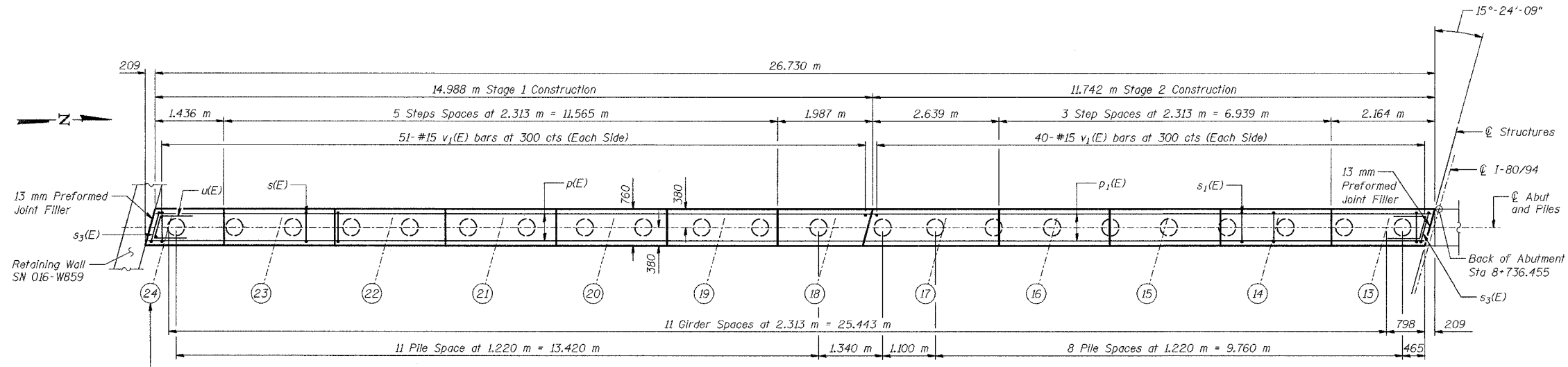


ELEVATION
(Looking West)

PILE DATA
 Type - 356 ϕ Metal Shell
 Capacity - 500 kN
 Est Length - 18.0 m
 *Est Length - 20.0 m
 No Reqd - 21
 Test Piles - 1



SECTION A-A

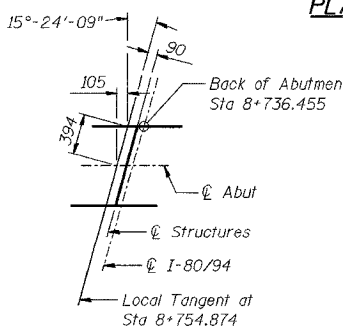


PLAN

BEARING SEAT ELEVATIONS

Girder	ϕ Brg W Abut
13	187.644
14	187.696
15	187.748
16	187.801
17	187.853
18	187.905
19	187.958
20	188.010
21	188.063
22	188.115
23	188.167
24	188.220

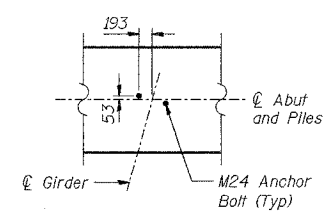
DESIGNED	BHS
CHECKED	KFA
DRAWN	MJB
CHECKED	GSP



OFFSET SKETCH

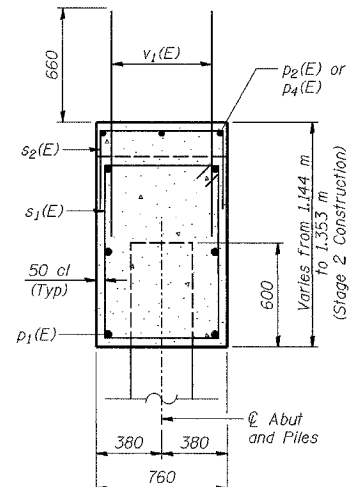
MINIMUM BAR LAPS

#15 bars = 640
 #20 bars = 790
 #25 bars = 1320



ANCHOR BOLT LAYOUT

NOTES:
 See Sheet No S-22 for reinforcement details and Bill of Material.
 See Sheet No S-24 for concrete pile details.
 Space reinforcement in cap to miss anchor bolts.
 Pour steps monolithically with cap.
 Reinforcement bars designated (E) shall be epoxy coated.
 Bars indicated thus 20 x 3-#15 etc. indicates 20 lines of bars with 3 lengths per line.
 All dimensions are in millimeters (mm) except as noted.
 All edges shall have standard 20 mm chamfers except as noted.
 Cost of 13 mm Preformed Joint Filler included with Concrete, A, Substructure.
 *For the 3 southernmost piles, which are outside the Limits of Existing Structure.
 **Cut bars to fit in field.



SECTION B-B

ILLINOIS DEPARTMENT OF TRANSPORTATION
 F.A.L. ROUTE 80/94 (BORMAN EXPRESSWAY)
 OVER HARRISON AVENUE

WEST ABUTMENT - EASTBOUND
SECTION 2626.2-R-2
LAKE COUNTY, INDIANA
STATION 8+754.874
STRUCTURE NO. I-80-1-8461 (EB & WB)
 DATE 09/05 (016-1005 & 016-1006)

AMERICAN
 CONSULTING ENGINEERS