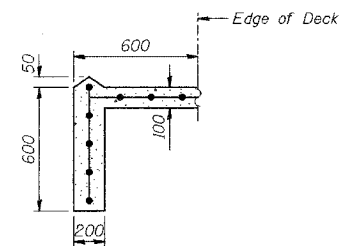


SECTION THRU INTEGRAL ABUTMENT

(Dimensions at Right Angles)

* Included in the cost of Structure Backfill



SECTION A-A

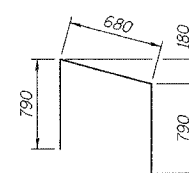
(Extend past limits of deck at locations where retaining wall is not present.)

**WEST ABUTMENT
BILL OF MATERIAL**

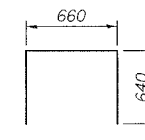
Bar	No.	Size	Length (m)	Shape
p(E)	16	#25	8.11	—
p ₁ (E)	6	#25	11.64	—
p ₂ (E)	15	#15	5.27	—
p ₃ (E)	3	#15	1.33	—
p ₄ (E)	3	#15	2.74	—
p ₅ (E)	8	#25	8.80	—
p ₆ (E)	8	#25	10.58	—
p ₇ (E)	6	#25	9.91	—
p ₈ (E)	3	#15	4.16	—
s(E)	49	#15	4.20	□
s ₁ (E)	37	#15	3.68	□
s ₂ (E)	111	#15	1.94	□
s ₃ (E)	8	#15	2.76	□
s ₄ (E)	29	#15	4.56	□
s ₅ (E)	28	#15	4.14	□
s ₆ (E)	29	#15	3.72	□
u(E)	15	#20	2.26	□
v ₁ (E)	362	#15	1.32	—
Test Pile	Each		1	
Structure Backfill		m ³	396	
Excavation, Foundation, Unclassified		m ³	249	
Concrete, A, Substructure		m ³	58.5	
Reinforcing Bars, Epoxy Coated		kg	4,090	
Pile, Concrete, Steel Shell Encased, 6.35 mm, 356 mm		m	786.0	
Threaded Tie Bar Assembly, Epoxy Coated Slope wall, Concrete, 100 mm		m ²	712	

**EAST ABUTMENT
BILL OF MATERIAL**

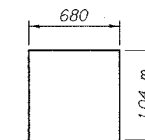
Bar	No.	Size	Length (m)	Shape
p(E)	16	#25	8.11	—
p ₁ (E)	6	#25	11.64	—
p ₂ (E)	15	#15	5.27	—
p ₃ (E)	3	#15	1.33	—
p ₄ (E)	3	#15	2.74	—
p ₅ (E)	8	#25	8.80	—
p ₆ (E)	8	#25	10.58	—
p ₇ (E)	6	#25	9.91	—
p ₈ (E)	3	#15	4.16	—
s ₂ (E)	111	#15	1.94	□
s ₃ (E)	8	#15	2.76	□
s ₆ (E)	37	#15	3.72	□
s ₇ (E)	49	#15	4.24	□
s ₈ (E)	29	#15	4.60	□
s ₉ (E)	28	#15	4.18	□
s ₁₀ (E)	29	#15	3.78	□
u(E)	15	#20	2.26	□
v ₁ (E)	362	#15	1.32	—
Test Pile	Each		1	
Structure Backfill		m ³	400	
Excavation, Foundation, Unclassified		m ³	218	
Concrete, A, Substructure		m ³	59.4	
Reinforcing Bars, Epoxy Coated		kg	4,100	
Pile, Concrete, Steel Shell Encased, 6.35 mm, 356 mm		m	745.5	
Threaded Tie Bar Assembly, Epoxy Coated Slope wall, Concrete, 100 mm		m ²	533	



BAR u(E)



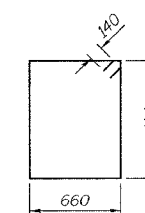
BAR s₂(E)



BAR s₃(E)

BAR DIMENSIONS

Bar	'A'
s(E)	1.30 m
s ₁ (E)	1.04 m
s ₄ (E)	1.48 m
s ₅ (E)	1.27 m
s ₆ (E)	1.06 m
s ₇ (E)	1.32 m
s ₈ (E)	1.50 m
s ₉ (E)	1.29 m
s ₁₀ (E)	1.09 m



BARS s(E), s₁(E), s₄(E), s₅(E), s₆(E), s₇(E), s₈(E), s₉(E) or s₁₀(E)

DESIGNED	BHS
CHECKED	KFA
DRAWN	MJB
CHECKED	GSP

NOTES:
Reinforcement bars designated (E) shall be epoxy coated.
All dimensions are in millimeters (mm) except as noted.

ILLINOIS DEPARTMENT OF TRANSPORTATION
F.A.I. ROUTE 80/94 (BORMAN EXPRESSWAY)
OVER HARRISON AVENUE

**ABUTMENT DETAILS
SECTION 2626.2-R-2
LAKE COUNTY, INDIANA
STATION 8+754.874
STRUCTURE NO. I-80-1-8461 (EB & WB)
DATE 09/05 (016-1005 & 016-1006)**

**AMERICAN
CONSULTING ENGINEERS**