

F.A.I. RTE.	SECTION	COUNTY	TOTAL SHEETS	SHEET NO.
80/94	2626.2-R-2	COOK	1207	721
STA.	TO STA.			
FED. ROAD DIST. NO.	ILLINOIS	FED. AID PROJECT		

CONTRACT NO. 62114

BENCHMARK

BM "M" Chiseled square cut in southwest wingwall of existing IL Rte 83 (Torrence Avenue) bridge over I-80. El. 188.209

DESIGN SPECIFICATIONS

1996 AASHTO Standard Specifications for Highway Bridges, with 1997 thru 2000 & 2002 Interims.
1989 AASHTO Guide Specifications for Structural Design of Sound Barriers with 1992 Interims.

DESIGN STRESSES

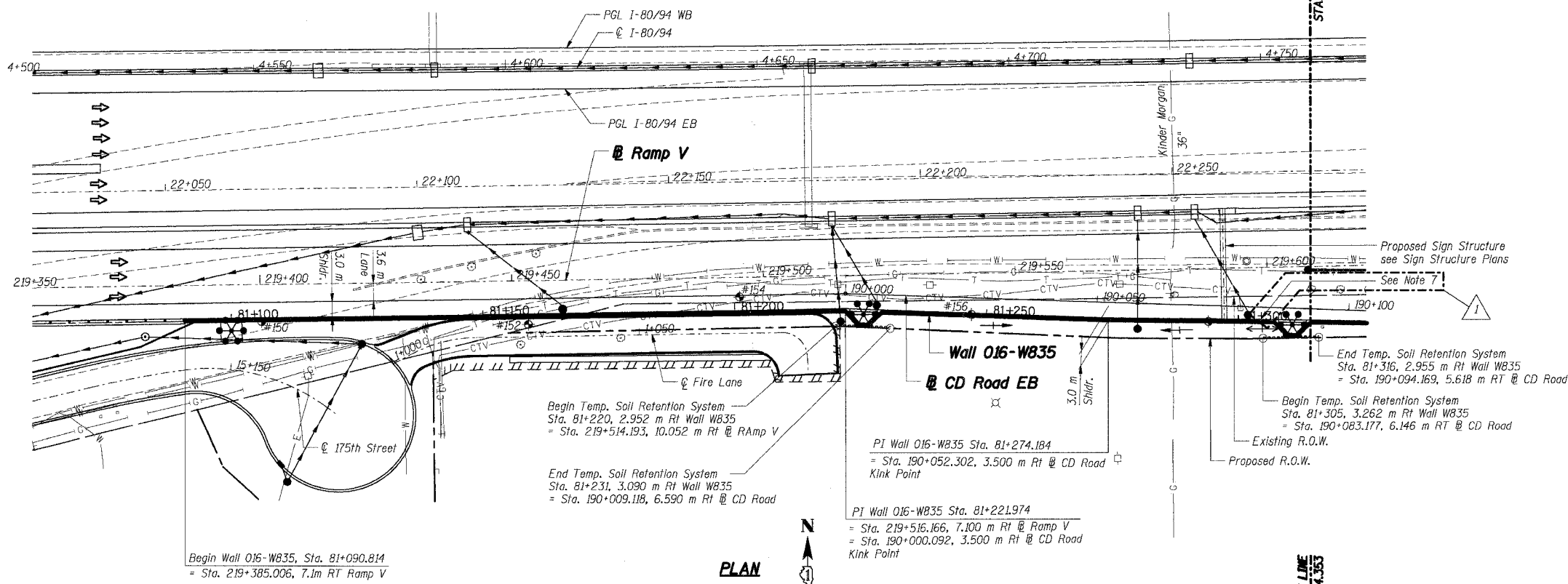
Concrete, $f'_c = 24 \text{ MPa}$
Reinforcement, $f_y = 400 \text{ MPa}$

DESIGN LOADING

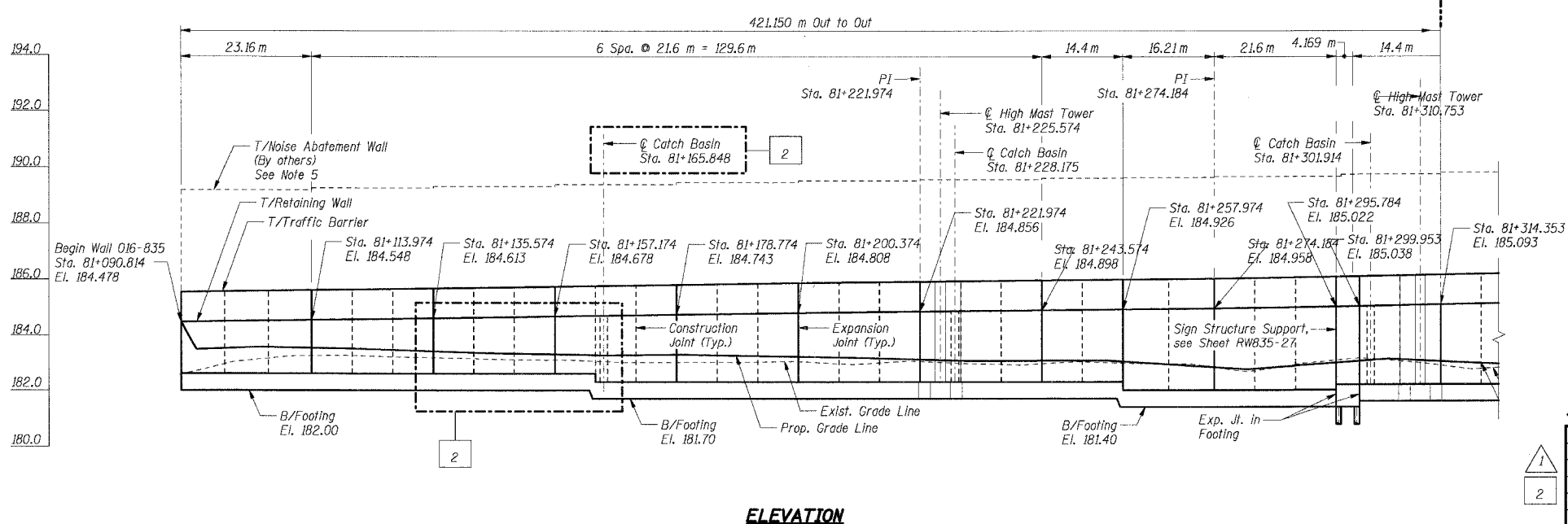
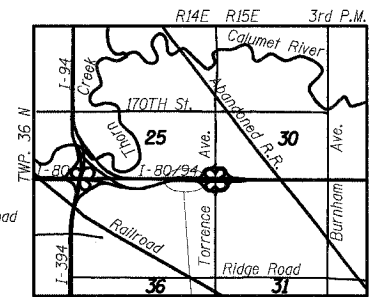
Wind Load On Noise Abatement Wall: 1.7 kPa
Design height of Noise Abatement Wall: 4.71m (Measured from top of retaining wall)

EXISTING STRUCTURE

None



- LEGEND:**
- #5 Soil Boring
 - High Mast Light Tower (by others)
 - Existing Storm Sewer
 - Proposed Storm Sewer
 - Existing Combined Sewer
 - Proposed Catch Basin
 - Drainage Structure
 - Proposed Retaining Wall
 - Proposed Pavement
 - Temporary Soil Retention System
 - Kinder Morgan
 - Exist. Gas Main (to remain)
 - Water Main (to be relocated)
 - Electric (to be relocated)
 - Telephone (to be relocated)
 - Cable Television



THIS SHEET FOR INFORMATION ONLY

- Notes:**
1. All dimensions are measured along front face of retaining wall.
 2. Wall alignment offsets are referenced to front face of wall.
 3. Work this sheet with RW835-2 and RW835-3.
 4. See Sht. RW835-3 for Index of Sheets, General Notes, and Bill of Materials.
 5. Noise abatement wall will be furnished and installed by others as part of future mainline reconstruction contract.
 6. See Sht. RW835-3 for Temporary Soil Retention System details.
 7. Provide sleeve for 50 mm diameter line to Chicago Heights water main air/vacuum release valve. Sleeve shall be 75 mm diameter located in wall stem. Location shall be determined by the Engineer in coordination with City of Chicago Heights.

SHT. RW835-1 OF 34

REVISIONS	
NAME	DATE
MJK	4/5/04
MJK	6/21/04

ILLINOIS DEPARTMENT OF TRANSPORTATION
F.A.I. ROUTE 80/94 (KINGERY EXPRESSWAY)
IL ROUTE 83 RECONSTRUCTION
RETAINING WALL - STRUCTURE NO. 016-W835
SECTION 2425 R-3 & 2425-711B
COOK COUNTY

GENERAL PLAN & ELEVATION I

DATE: 02/20/2004
DRAWN BY: SC
CHECKED BY: MJK

TENG
ENGINEERS/ARCHITECTS/PLANNERS
CHICAGO, ILLINOIS

7-4-2005 11:33:25
 T:\DOCUMENTS\931750\STRUCTURE\DRAWINGS\8502A.DGN
 2,3,4,5,6,7,8,9,10,11,12,13,14,15,16,17,18,19,20,21,22,23,24,25,26,27,28,29,30,31,32,33,34,35,36,37,38,39,40,41,42,43,44,45,46,47,48,49,50,51,52,53,54,55,56,57,58,59,60,61,62,63
 BAIZEKJ