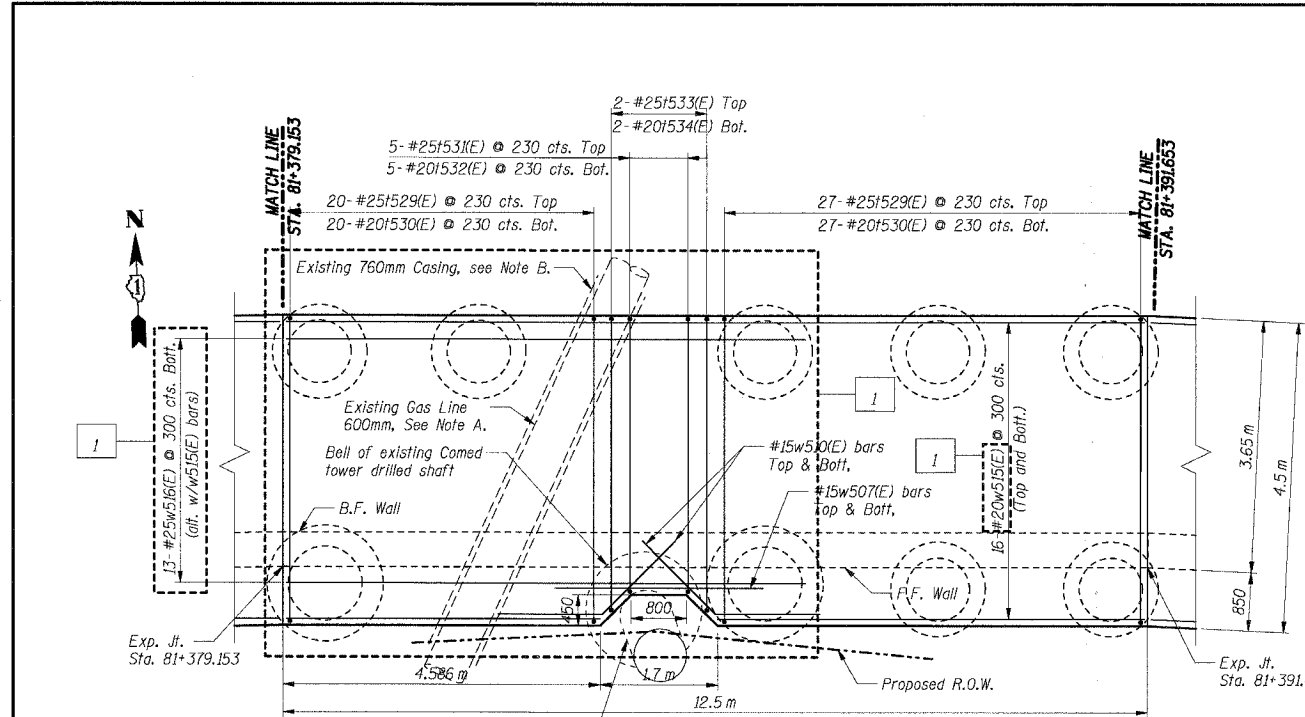


F.A.I. RTE.	SECTION	COUNTY	TOTAL SHEETS	SHEET NO.
80/94	2626.2-R-2	COOK	1207	737
STA.	TO STA.			
FED. ROAD DIST. NO.	ILLINOIS	FED. AID PROJECT		

CONTRACT NO. 62114



Note A: The footing design and details accommodate the existing utility lines as shown based on the available record documents. The Contractor shall field verify the exact location and elevation of the utility lines prior to proceeding with any construction activities that may affect the subject utility. If the Contractor finds conflict with the proposed construction, they should inform the Engineer of the conflict, provide relevant information/measurements, and ask for modifications to the proposed design and details.

Note B: A minimum of 600mm clearance shall be maintained between drilled shaft and gas main casing.

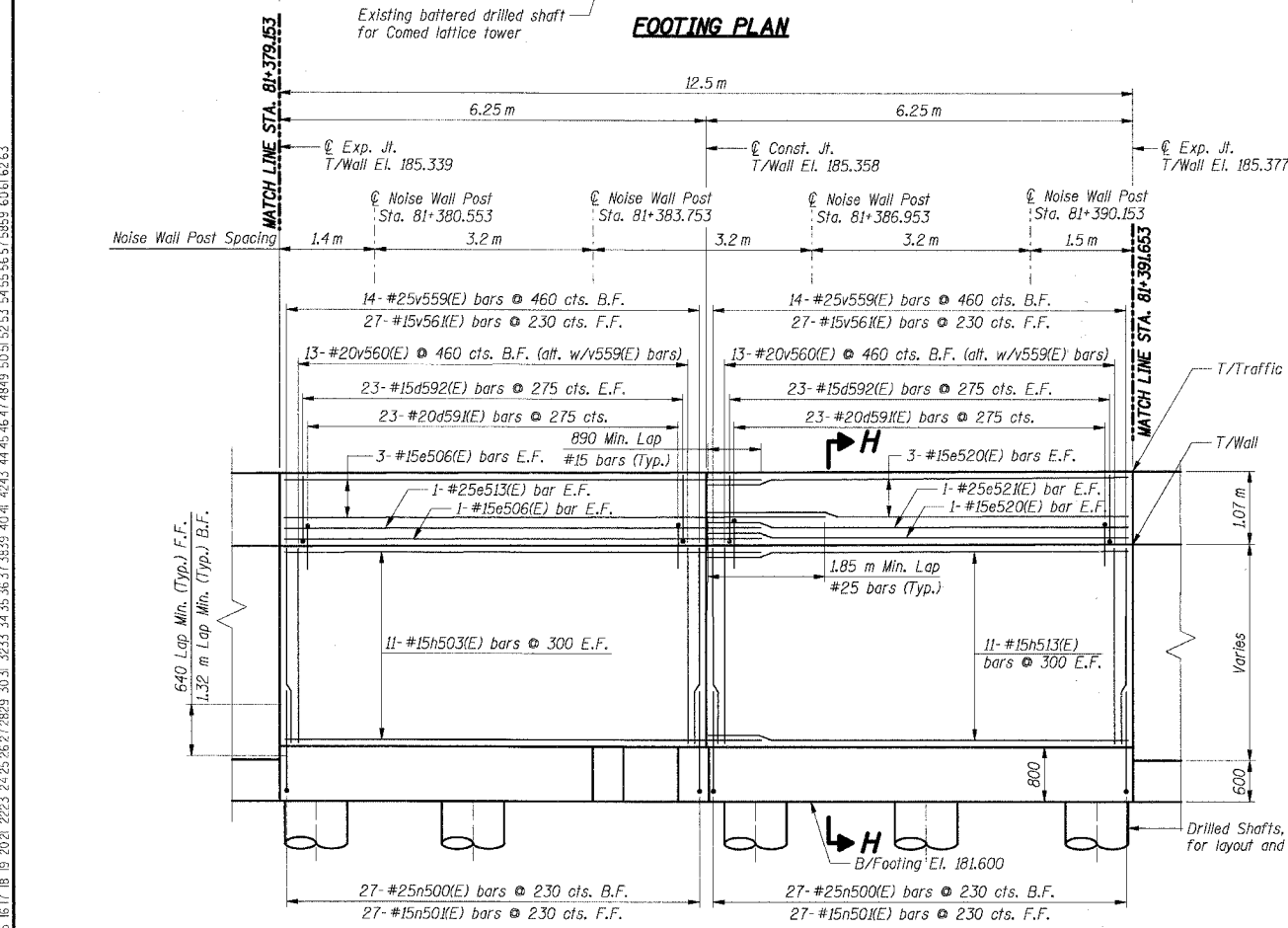
BAR LIST

Bar	No.	Size	Length (m)	Shape
d59(E)	46	#20	2.59	□
d592(E)	92	#15	1.22	□
e506(E)	8	#15	7.15	—
e513(E)	2	#25	8.05	—
e520(E)	8	#15	6.20	—
e52(E)	2	#25	6.20	—
h503(E)	22	#15	7.15	—
h513(E)	22	#15	6.20	—
n500(E)	54	#25	2.30	—
n50(E)	54	#15	1.50	—
v529(E)	47	#25	5.60	—
v530(E)	47	#20	5.60	—
v53(E)	5	#25	5.15	—
v532(E)	5	#20	5.15	—
v533(E)	2	#25	5.40	—
v534(E)	2	#20	5.40	—
v559(E)	28	#25	3.05	—
v560(E)	26	#20	3.05	—
v56(E)	54	#15	3.05	—
w507(E)	2	#15	2.80	—
w510(E)	4	#15	2.65	—
w515(E)	32	#20	12.40	—
w516(E)	13	#25	7.50	—

BILL OF MATERIAL

Item	Unit	Total
Concrete Structures	Cu m	68.0
Reinforcement Bars, Epoxy Coated	kg	5,820

- Notes:**
- All dimensions are in millimeters (mm) except as noted.
 - Reinforcement bars designated (E) shall be epoxy coated.
 - All edges shall have a 20 mm chamfer unless noted otherwise.
 - For section H-H see Sheet RW835-26.
 - E.F. indicates each face.
 - B.F. indicates back face.
 - F.F. indicates front face.
 - For Noise Abatement Wall pilaster details see sheet RW835-30.
 - For Traffic Barrier details see Sht. RW835-30.
 - For Rustication Finish & joint details see Sht. RW835-32.
 - For Drainage and Reinforcement details see Sht. RW835-31.
 - Bars indicated thus 4x2-#15 etc. indicates 4 lines of bars with 2 lengths per line.



THIS SHEET FOR INFORMATION ONLY

SHT. RW835-19 OF 34

REVISIONS	
NAME	DATE
MJK	6/21/04

ILLINOIS DEPARTMENT OF TRANSPORTATION
 F.A.I. ROUTE 80/94 (KINGERY EXPRESSWAY)
 IL ROUTE 83 RECONSTRUCTION
 RETAINING WALL - STRUCTURE NO. 016-W835
 SECTION 2425 R-3 & 2425-711B
 COOK COUNTY

FOOTING PLAN & WALL ELEVATION 15

DATE: 02/20/2004
 DRAWN BY: DG
 CHECKED BY: SC

TENG
 TENG & ASSOCIATES, INC.
 ENGINEERS/ARCHITECTS/PLANNERS
 CHICAGO, ILLINOIS

7--2005, 1833:08
 T:\DOCUMENT\53750\STRUCT\00\N\8102102A.DGN
 12 3 4 56 78 9 10 11 12 13 14 15 16 17 18 19 20 21 22 23 24 25 26 27 28 29 30 31 32 33 34 35 36 37 38 39 40 41 42 43 44 45 46 47 48 49 50 51 52 53 54 55 56 57 58 59 60 61 62 63