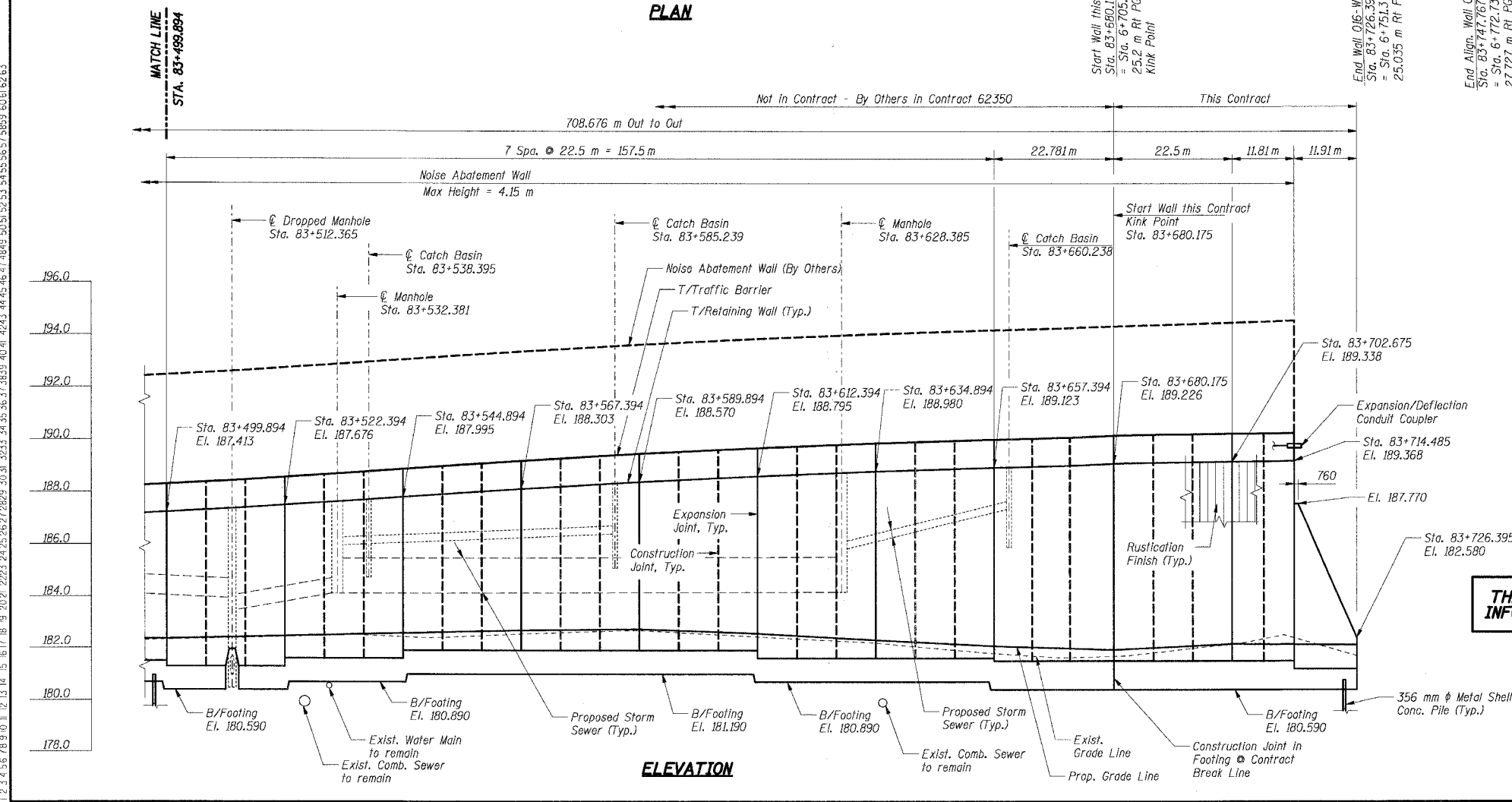
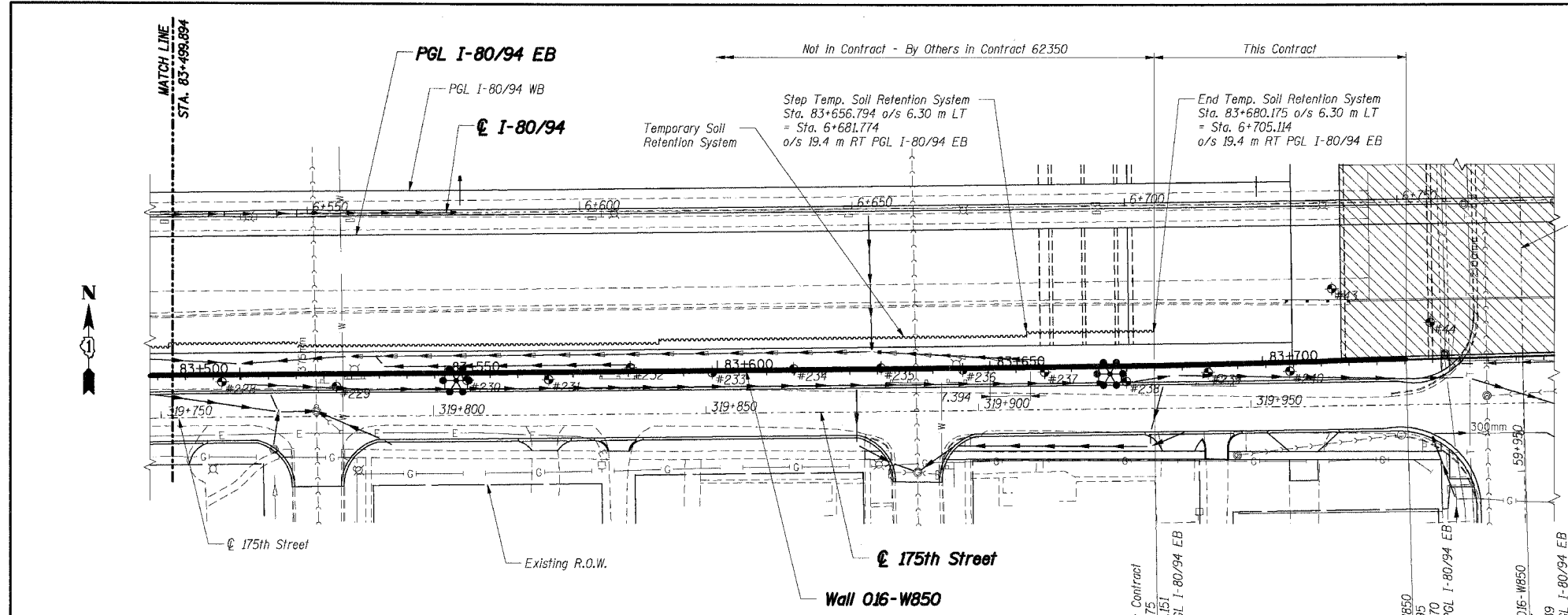


F.A.I. RTE.	SECTION	COUNTY	TOTAL SHEETS	SHEET NO.
80/94	2626.2-R-2	COOK	1207	770
STA.	TO STA.			
FED. ROAD DIST. NO.	ILLINOIS	FED. AID PROJECT		

CONTRACT NO. 62114



- LEGEND**
- ✱ High Mast Light Tower, (By Others, Contract No. 62664)
  - Existing Storm Sewer
  - Proposed Storm Sewer
  - Existing Combined Sewer, See Note 5
  - #5 Soil Boring
  - Proposed Manhole
  - Proposed Manhole
  - ▭ Proposed Catch Basin
  - Proposed Inlet
  - ▨ Rip Rap
  - ▨ Proposed Retaining Wall
  - ▨ Proposed Pavement
  - W— Water Main, See Note 5
  - E— Electric, See Note 5
  - T— Telephone, See Note 5
  - Proposed R.O.W.
  - Existing R.O.W.
  - ▨ Temporary Soil Retention System
  - ▨ Proposed Bridge Structure S.N. 016-2791 Constructed in this Contract.

- Notes:**
1. All dimensions are measured along front face of retaining wall.
  2. Wall alignment offsets are referenced to front face of wall
  3. Work this sheet with RW850-1 and RW850-2.
  4. See Sht. RW850-4 for Index of Sheets.
  5. See Drainage Plans.

**THIS SHEET FOR INFORMATION ONLY**

**SHT. RW850-3 OF 58**

REVISIONS	
NAME	DATE

\*\*\* 2001-167R, (2425 & 2626) R-1 AND (2425 & 2626) R-2

ILLINOIS DEPARTMENT OF TRANSPORTATION  
 F.A.I. ROUTE 80/94 (KINGERY EXPRESSWAY)  
 EB & WB INSIDE LANES (MAINLINE) CONSTRUCTION  
 RETAINING WALL - STRUCTURE NO. 016-W850  
 SECTIONS \*\*\*  
 COOK COUNTY

**GENERAL PLAN & ELEVATION III**

DATE: 7/18/2005

DRAWN BY: MJK  
 CHECKED BY: MJK

**TENG**  
 TENG & ASSOCIATES, INC.  
 ENGINEERS/ARCHITECTS/PLANNERS  
 CHICAGO, ILLINOIS

\*\*\*\*\*  
 7-18-2005, 15:34:44  
 T:\DOCUMENTS\1591750\STRUCT\CON\RW850\032A.DGN  
 2, 3, 4, 5, 6, 7, 8, 9, 10, 11, 12, 13, 14, 15, 16, 17, 18, 19, 20, 21, 22, 23, 24, 25, 26, 27, 28, 29, 30, 31, 32, 33, 34, 35, 36, 37, 38, 39, 40, 41, 42, 43, 44, 45, 46, 47, 48, 49, 50, 51, 52, 53, 54, 55, 56, 57, 58, 59, 60, 61, 62, 63  
 BALZEEKJ