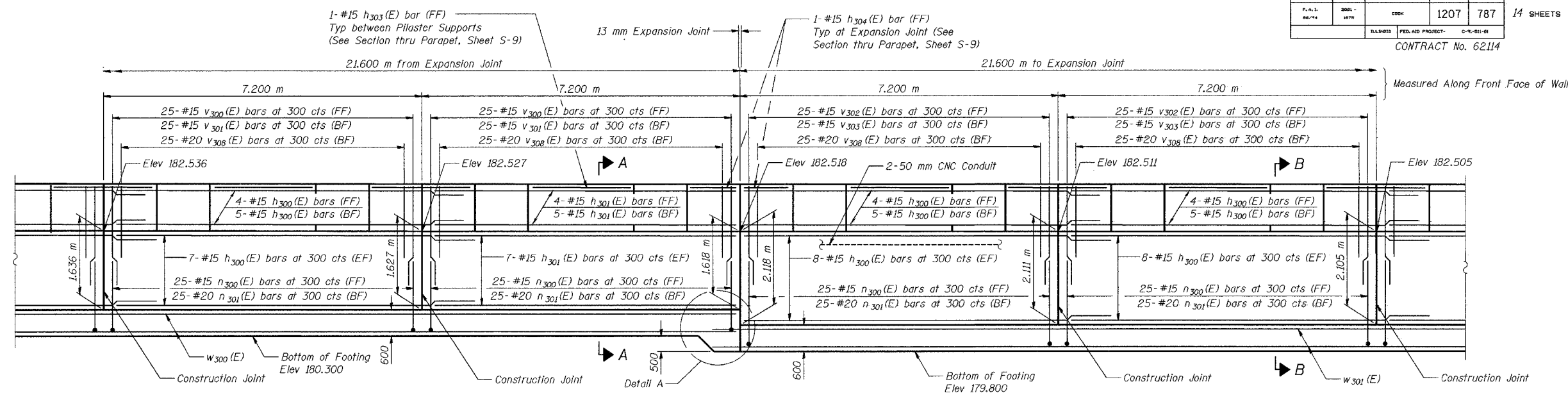
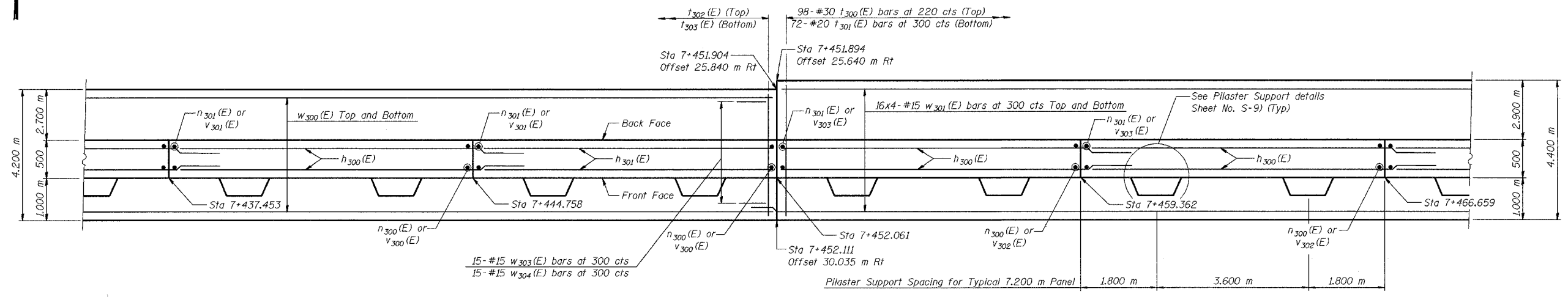


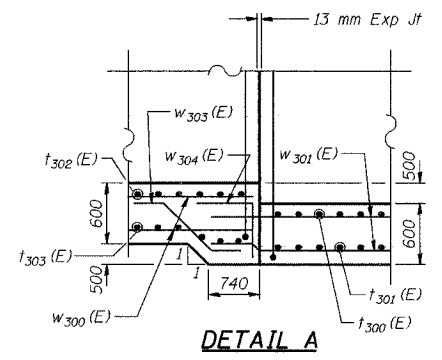
ROUTE NO.	SECTION	COUNTY	SHEET	SHEET	SHEET NO. S-5 14 SHEETS
86/74	2001-167R	COOK	1207	787	
ILLINOIS FEDERAL PROJECT: C-9-81-8					CONTRACT No. 62114



ELEVATION



FOOTING PLAN



DETAIL A

DESIGNED	KFA
CHECKED	MJW
DRAWN	MJW
CHECKED	GSP

MINIMUM BAR LAPS
 #15 bars = 640
 #20 bars = 790

LEGEND
 BF = Back Face
 FF = Front Face
 EF = Each Face

NOTES:
 See Sheet S-9 for Section A-A, Section B-B, Expansion Joint Detail, and Bill of Material.
 See Sheet S-10 for Rustication details.
 Stations are referenced to \mathcal{C} I-80/94.
 Reinforcement bars designated (E) shall be epoxy coated.
 All dimensions are in millimeters (mm) except as noted.
 See Electrical Drawings for Junction Box and Conduit Details.
 Bars indicated thus 20 x 3-#15 etc. indicates 20 lines of bars with 3 lengths per line.

ILLINOIS DEPARTMENT OF TRANSPORTATION
 F.A.I. ROUTE 80/94 AND U.S. ROUTE 6
 LOCAL ROAD RECONSTRUCTION
PLAN AND ELEVATION (3 OF 6)
SECTION 2001-167R
COOK COUNTY
STATION 7+386.260 TO STATION 7+543.382
STRUCTURE NO. 016-W853
 DATE 07/05
AMERICAN
 CONSULTING ENGINEERS

FOR INFORMATION ONLY