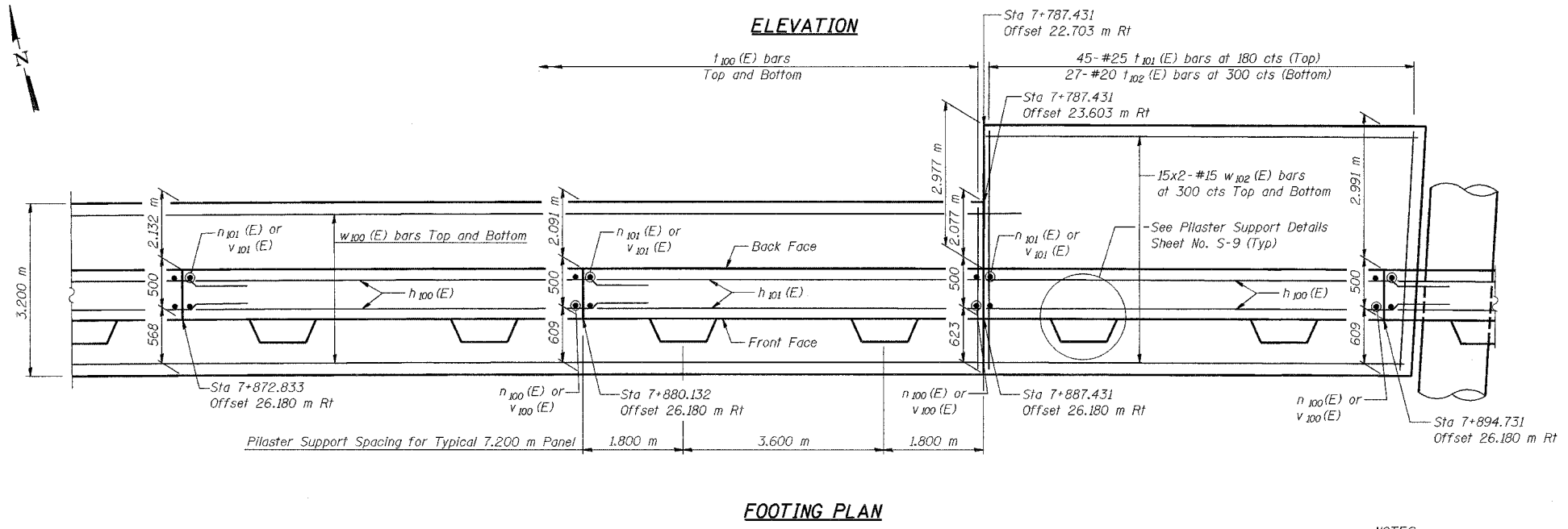
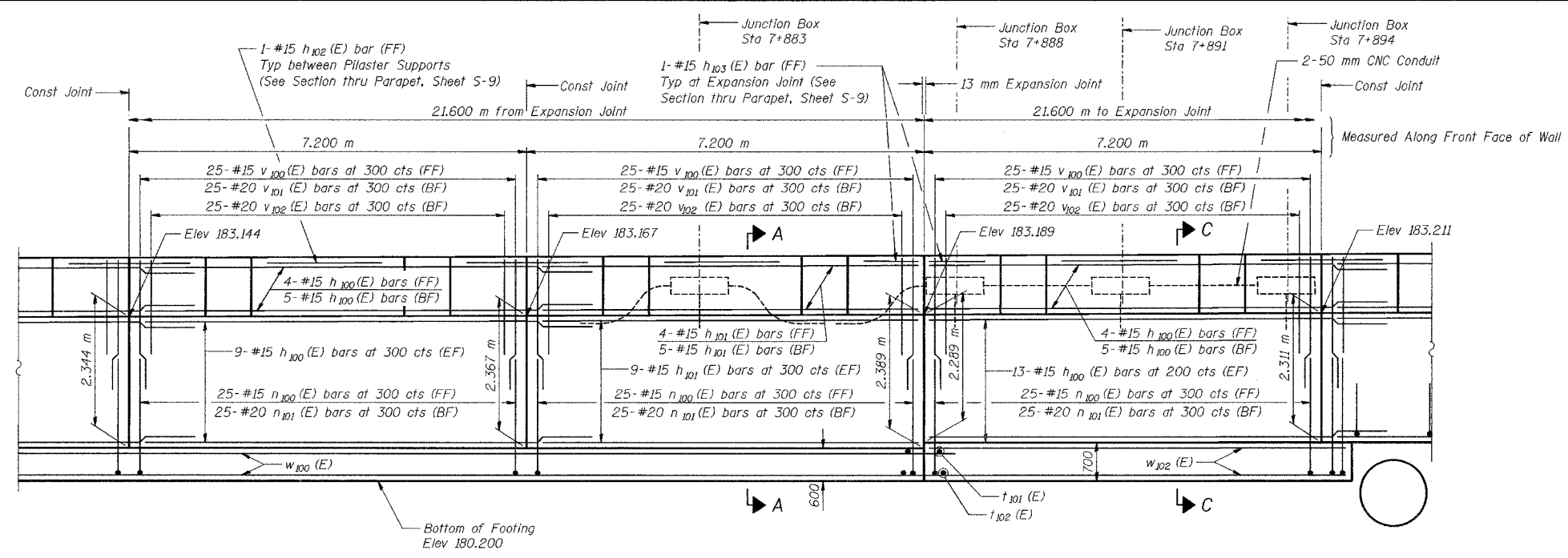


|           |            |          |       |         |               |
|-----------|------------|----------|-------|---------|---------------|
| ROUTE NO. | SECTION    | COUNTY   | SHEET | POST    | SHEET NO. S-5 |
| 7+814     | 2626.2-R-1 | COOK     | 1207  | 813     | 12 SHEETS     |
| DRAWN     |            | REVISION |       | PROJECT |               |

CONTRACT NO. 62114 INDOT DES. NO. 0100987



|          |     |
|----------|-----|
| DESIGNED | MJW |
| CHECKED  | KFA |
| DRAWN    | MJB |
| CHECKED  | GSP |

**MINIMUM BAR LAPS**  
 #15 bars = 640  
 #20 bars = 790

**LEGEND**  
 BF = Back Face  
 FF = Front Face  
 EF = Each Face

**NOTES:**  
 See Sheet S-9 for Section A-A, Section C-C, Expansion Joint Detail, and Bill of Material.  
 See Sheet S-10 for Rustication details.  
 Stations are referenced to  $\text{CL}$  I-80/94.  
 Reinforcement bars designated (E) shall be epoxy coated.  
 All dimensions are in millimeters (mm) except as noted.  
 Bars indicated thus 20 x 3-#15 etc. indicates 20 lines of bars with 3 lengths per line.  
 See Electrical Drawings for Junction Box and Conduit Details.

ILLINOIS DEPARTMENT OF TRANSPORTATION  
 I-80/94/US 6  
 KINGERY-BORMAN EXPRESSWAY  
 BURNHAM ROAD TO US 41

**PLAN AND ELEVATION (3 OF 6)**  
**SECTION 2626.2-R-1**  
**COOK COUNTY**  
**STATION 7+821.737 TO STATION 7+960.424**  
**STRUCTURE NO. 016-W855**  
 DATE 07/05

**AMERICAN**  
 CONSULTING ENGINEERS

FOR INFORMATION ONLY