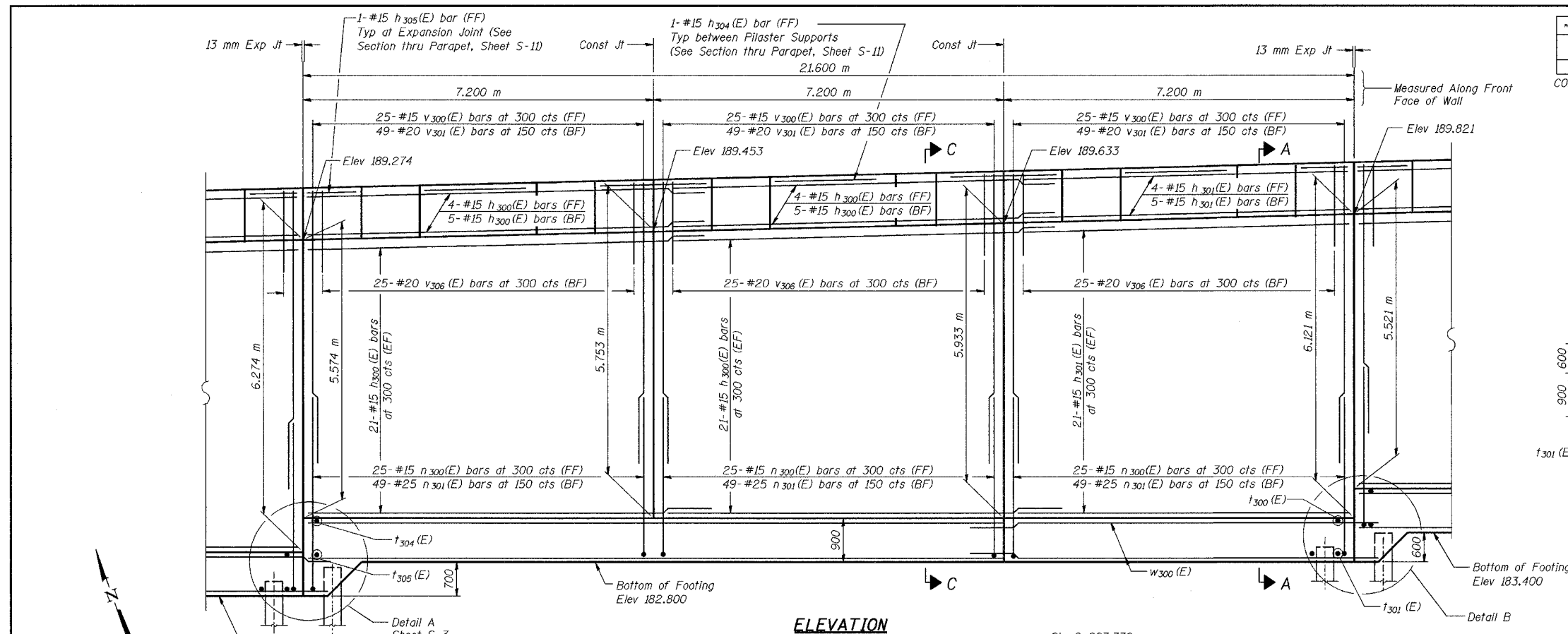
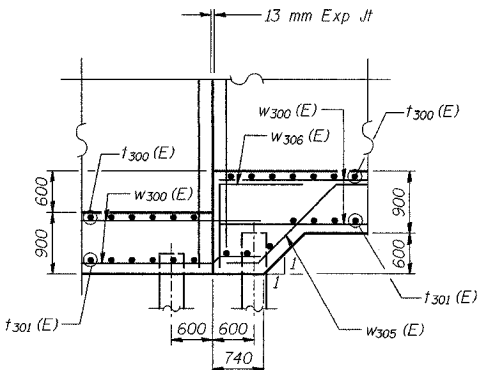


ROUTE NO.	SECTION	COUNTY	SHEET	SHEET NO. S-4
F.A.Z. 08-14	266.2-R-1	LAKE COUNTY, INDIANA	1207 844	20 SHEETS
DRAWN		EST. AND PROJECT		

CONTRACT NO. 62114 INDOT DES. NO. 0100987

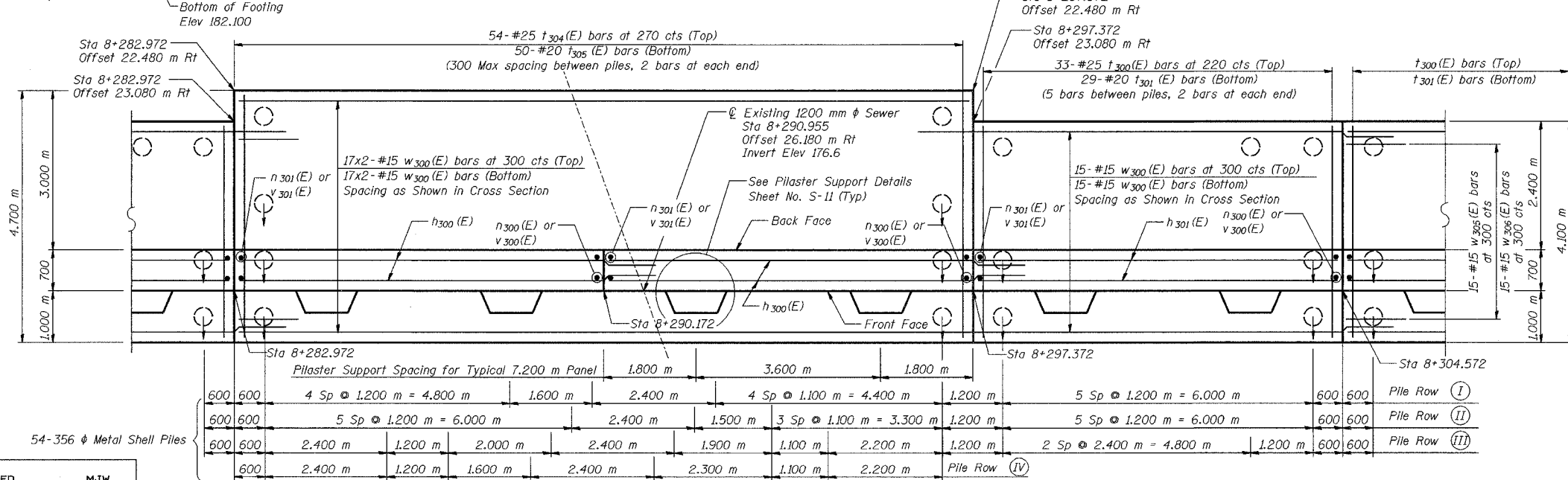


**ELEVATION**



**DETAIL B**

**NOTES:**  
 See Sheet S-11 for Section A-A, Section C-C  
 See Sheet S-12 for Expansion Joint Detail and Bill of Material.  
 See Sheet S-13 for Rustication details.  
 Stations are referenced to  $\pm$  1-80/94.  
 Reinforcement bars designated (E) shall be epoxy coated.  
 All dimensions are in millimeters (mm) except as noted.  
 Bars indicated thus 20 x 3-#15 etc. indicates 20 lines of bars with 3 lengths per line.  
 The Contractor shall locate all utilities (existing and new) prior to driving piles, by exploratory test pits and/or probes. The cost of locating utilities shall be included with Pile, Concrete, Steel Shell Encased, 6.35 mm, 356 mm. Any conflicts between the utilities and the proposed piles shall be reported in writing to the Bureau of Bridges and Structures for further disposition. Piles within 3 meters horizontally of actual utility location shall be preaugered/precored to the greater of bottom of the utility or 3 meter depth to maintain utility in original vertical and horizontal position. The diameter of preaugered/precored hole shall be the same diameter as outside diameter of pile. The cost of the preaugering/precoreing shall be included with Pile, Concrete, Steel Shell Encased, 6.35 mm, 356 mm.



**FOOTING PLAN**

DESIGNED	MJW
CHECKED	KFA
DRAWN	MJB
CHECKED	GSP

**MINIMUM BAR LAPS**

#15 bars = 640  
 #20 bars = 790

**LEGEND**

BF = Back Face  
 FF = Front Face  
 EF = Each Face

**ILLINOIS DEPARTMENT OF TRANSPORTATION**  
 I-80/94/US 6  
 KINGERY-BORMAN EXPRESSWAY  
 BURNHAM ROAD TO US 41  
**PLAN AND ELEVATION (2 OF 8)**  
**SECTION 266.2-R-1**  
**LAKE COUNTY, INDIANA**  
**STATION 8+268.572 TO STATION 8+445.954**  
**STRUCTURE NO. 016-W857**  
 DATE 07/05



FOR INFORMATION ONLY