

**BORING NO. AR-088 (2 OF 2)**

**BORING NO. AR-089 (1 OF 2)**

**BORING NO. AR-089 (2 OF 2)**

**BORING LOG AR-088** Page 2 of 2  
 Wang Engineering, INC. Consulting Geotechnical and Environmental Engineers  
 wongeng@wongeng.com  
 100 Fairbank Street  
 Addison, IL 60101  
 Telephone: 630 458-0700  
 Fax: 630 458-0900

WEI Job No.: 255-08-01  
 Client: American Consulting Engineers  
 Project: FAI 80/94, I-294 to US 41  
 Location: s13 T36N R10W & s29 R15E T36N

Datum: NGVD  
 Elevation: 188.72 m  
 North: 545353.37 m  
 East: 367708.24 m  
 Station: 84292.64  
 Offset: 16.24 LT

**BORING LOG AR-089** Page 1 of 2  
 Wang Engineering, INC. Consulting Geotechnical and Environmental Engineers  
 wongeng@wongeng.com  
 100 Fairbank Street  
 Addison, IL 60101  
 Telephone: 630 458-0700  
 Fax: 630 458-0900

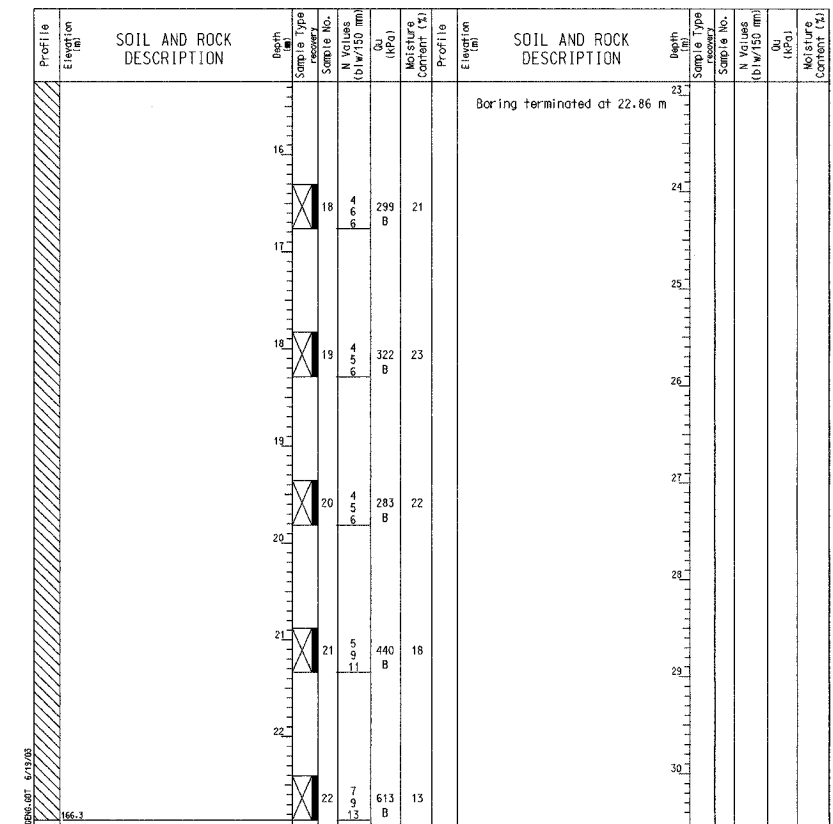
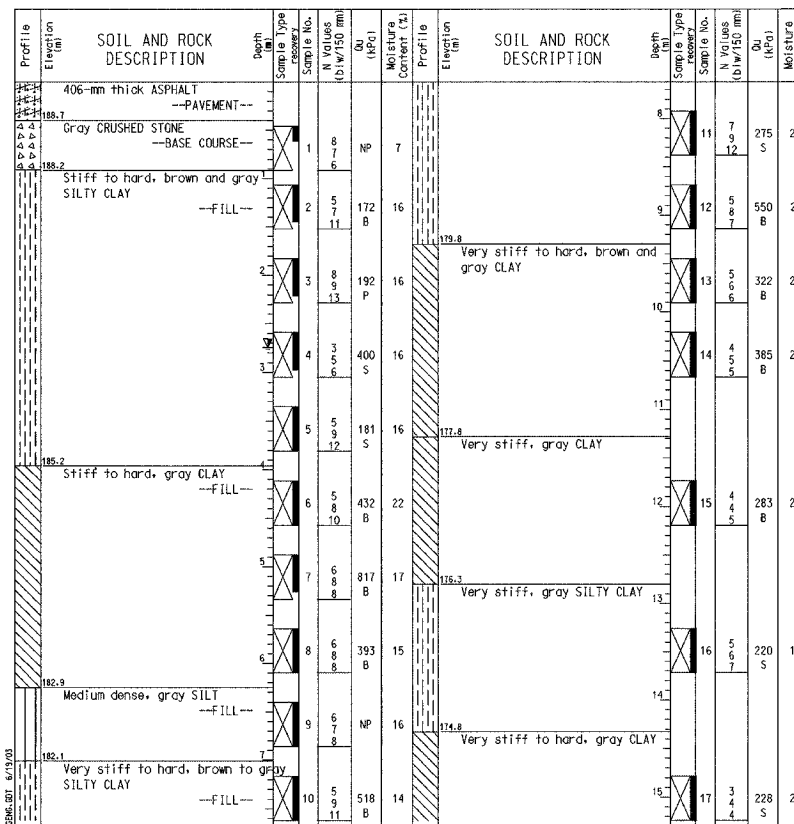
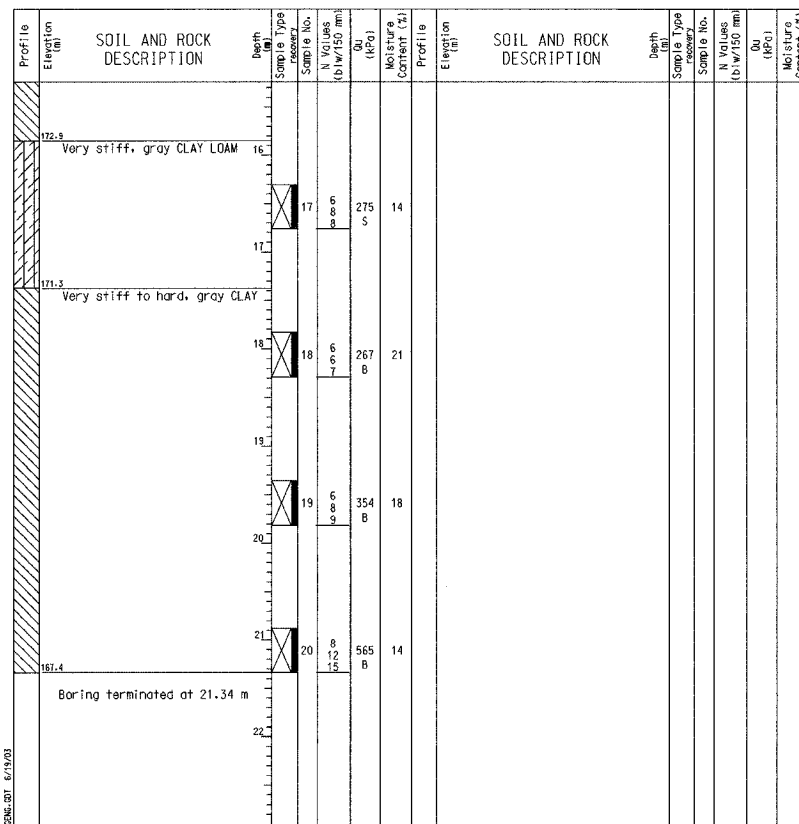
WEI Job No.: 255-08-01  
 Client: American Consulting Engineers  
 Project: FAI 80/94, I-294 to US 41  
 Location: s13 T36N R10W & s29 R15E T36N

Datum: NGVD  
 Elevation: 189.11 m  
 North: 545347.48 m  
 East: 367708.18 m  
 Station: 84292.57  
 Offset: 16.35 LT

**BORING LOG AR-089** Page 2 of 2  
 Wang Engineering, INC. Consulting Geotechnical and Environmental Engineers  
 wongeng@wongeng.com  
 100 Fairbank Street  
 Addison, IL 60101  
 Telephone: 630 458-0700  
 Fax: 630 458-0900

WEI Job No.: 255-08-01  
 Client: American Consulting Engineers  
 Project: FAI 80/94, I-294 to US 41  
 Location: s13 T36N R10W & s29 R15E T36N

Datum: NGVD  
 Elevation: 189.11 m  
 North: 545347.48 m  
 East: 367708.18 m  
 Station: 84292.57  
 Offset: 16.35 LT



**GENERAL NOTES**

Begin Drilling 04-25-2002 Complete Drilling 04-25-2002  
 Drilling Contractor TSC Drill Rig CME 75  
 Driller C&J Logger H. Suhail checked by B. Fugiel  
 Drilling Method Mud Rotary; Grouted after final water reading

**WATER LEVEL DATA**

While Drilling   
 At Completion of Drilling   
 Time After Drilling 24 hours  
 Depth to Water 2.44 m  
 The stratification lines represent the approximate boundary between soil types; the actual transition may be gradual.

**GENERAL NOTES**

Begin Drilling 04-24-2002 Complete Drilling 04-24-2002  
 Drilling Contractor TSC Drill Rig CME 75  
 Driller C&J Logger H. Suhail checked by B. Fugiel  
 Drilling Method Mud Rotary; Grouted after final water reading

**WATER LEVEL DATA**

While Drilling   
 At Completion of Drilling   
 Time After Drilling 24 hours  
 Depth to Water 2.74 m  
 The stratification lines represent the approximate boundary between soil types; the actual transition may be gradual.

**GENERAL NOTES**

Begin Drilling 04-24-2002 Complete Drilling 04-24-2002  
 Drilling Contractor TSC Drill Rig CME 75  
 Driller C&J Logger H. Suhail checked by B. Fugiel  
 Drilling Method Mud Rotary; Grouted after final water reading

**WATER LEVEL DATA**

While Drilling   
 At Completion of Drilling   
 Time After Drilling 24 hours  
 Depth to Water 2.74 m  
 The stratification lines represent the approximate boundary between soil types; the actual transition may be gradual.

DESIGNED	KFA
CHECKED	BPS
DRAWN	CAK/JB
CHECKED	GSP

ILLINOIS DEPARTMENT OF TRANSPORTATION  
 I-80/94/US 6  
 KINGERY-BORMAN EXPRESSWAY  
 BURNHAM ROAD TO US 41

**BORING LOGS (2 OF 7)**  
**SECTION 2626.2-R-2**  
**LAKE COUNTY, INDIANA**  
**STATION 8+235.100 TO STATION 8+412.491**  
**STRUCTURE NO. 016-W858**

DATE 09/05

**AMERICAN**  
 CONSULTING ENGINEERS