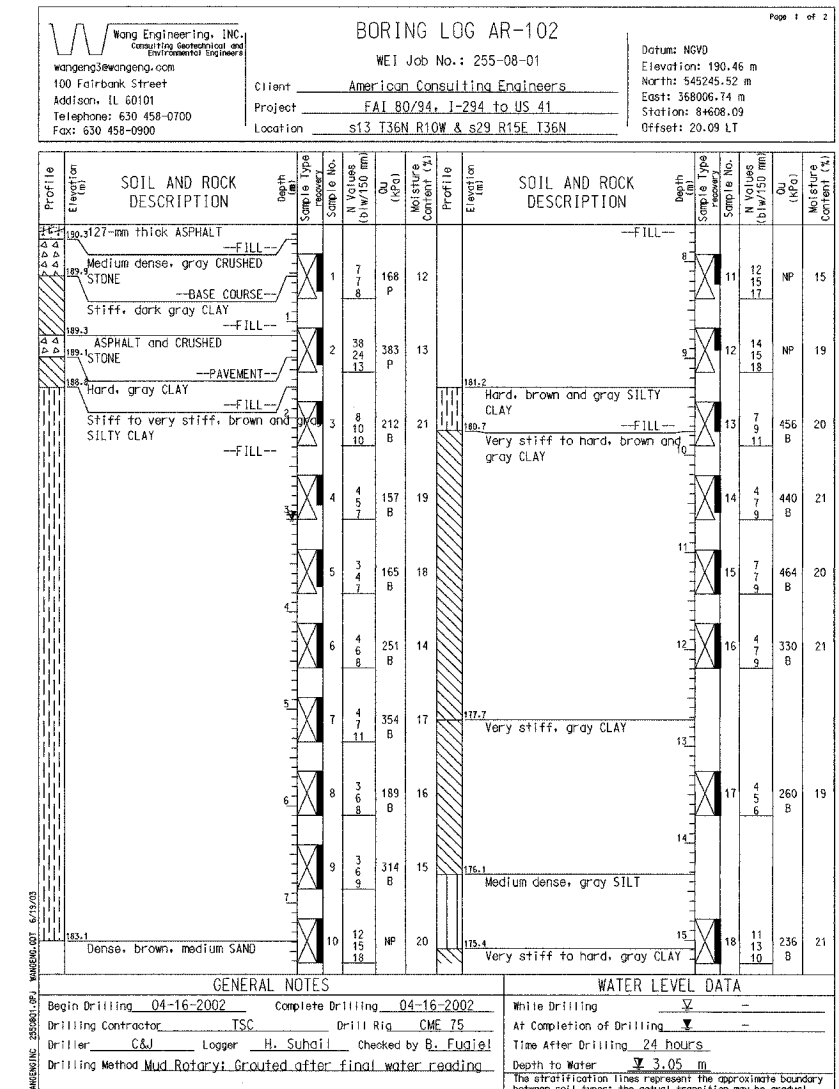
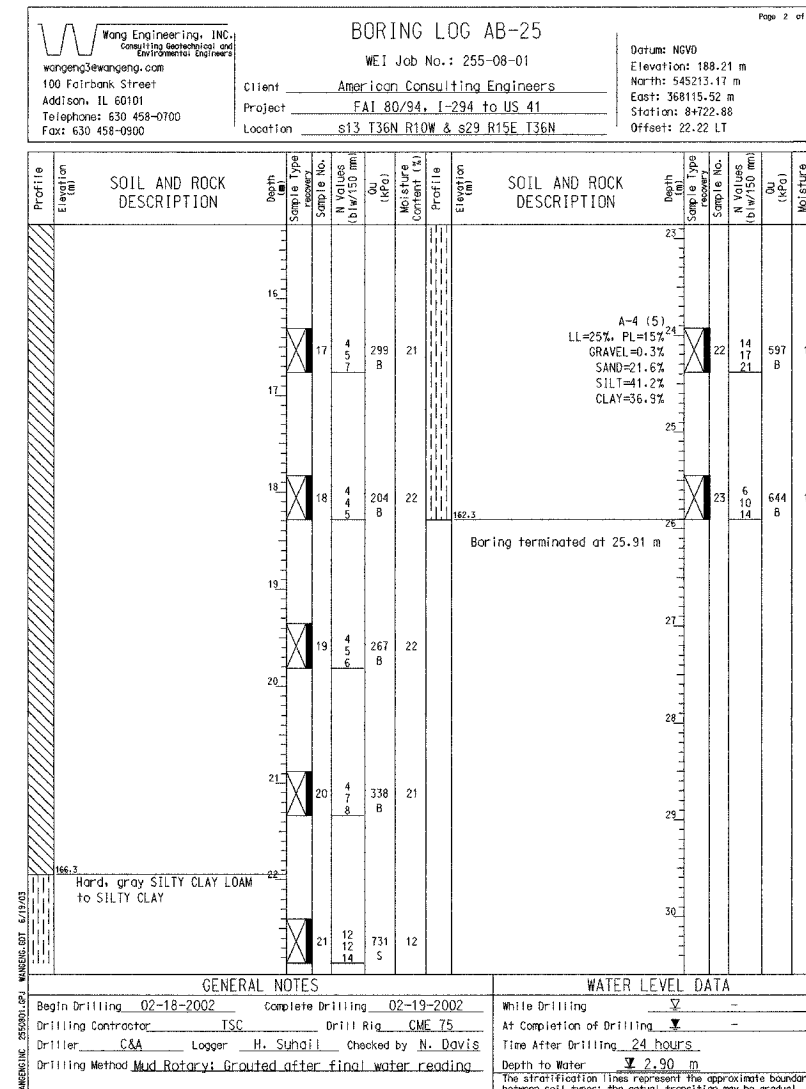
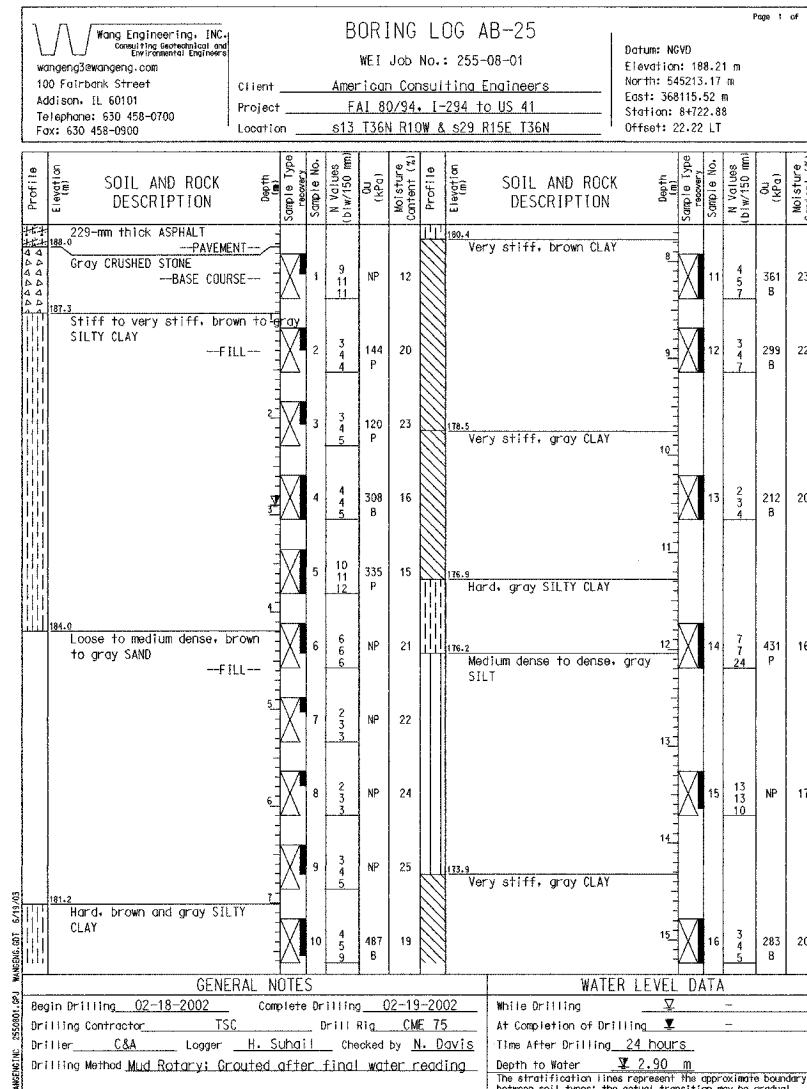


**BORING NO. AB-25 (1 OF 2)**

**BORING NO. AB-25 (2 OF 2)**

**BORING NO. AR-102 (1 OF 2)**



DESIGNED	KFA
CHECKED	BPS
DRAWN	MJB
CHECKED	GSP

ILLINOIS DEPARTMENT OF TRANSPORTATION  
 I-80/94/US 6  
 KINGERY-BORMAN EXPRESSWAY  
 BURNHAM ROAD TO US 41

**BORING LOGS (2 OF 6)**  
 SECTION 2626.2-R-2  
 LAKE COUNTY, INDIANA  
 STATION 8+581.326 TO STATION 8+733.961  
 STRUCTURE NO. 016-W860

DATE 09/05

**AMERICAN**  
 CONSULTING ENGINEERS