

**BORING NO. AR-305 (1 OF 2)**

**BORING NO. AR-305 (2 OF 2)**

**BORING NO. AR-306 (1 OF 1)**

**BORING LOG AR-305** Page 1 of 2

Wang Engineering, INC. Consulting Geotechnical and Environmental Engineers  
wongeng3@wongeng.com  
1145 Main Street  
Lombard, IL 60148  
Telephone: 630 953-9928  
Fax: 630 953-9938

WEI Job No.: 255-08-08  
Client: American Consulting Engineers  
Project: I-80/94, I-294 to US 41  
Location: s29 T36N R15E & s13 T36 R10W

Date: NGVD  
Elevation: 182.28 m  
North: 54511.52 m  
East: 368363.89 m  
Station: 8+986.72  
Offset: 26.53 RT

**BORING LOG AR-305** Page 2 of 2

Wang Engineering, INC. Consulting Geotechnical and Environmental Engineers  
wongeng3@wongeng.com  
1145 Main Street  
Lombard, IL 60148  
Telephone: 630 953-9928  
Fax: 630 953-9938

WEI Job No.: 255-08-08  
Client: American Consulting Engineers  
Project: I-80/94, I-294 to US 41  
Location: s29 T36N R15E & s13 T36 R10W

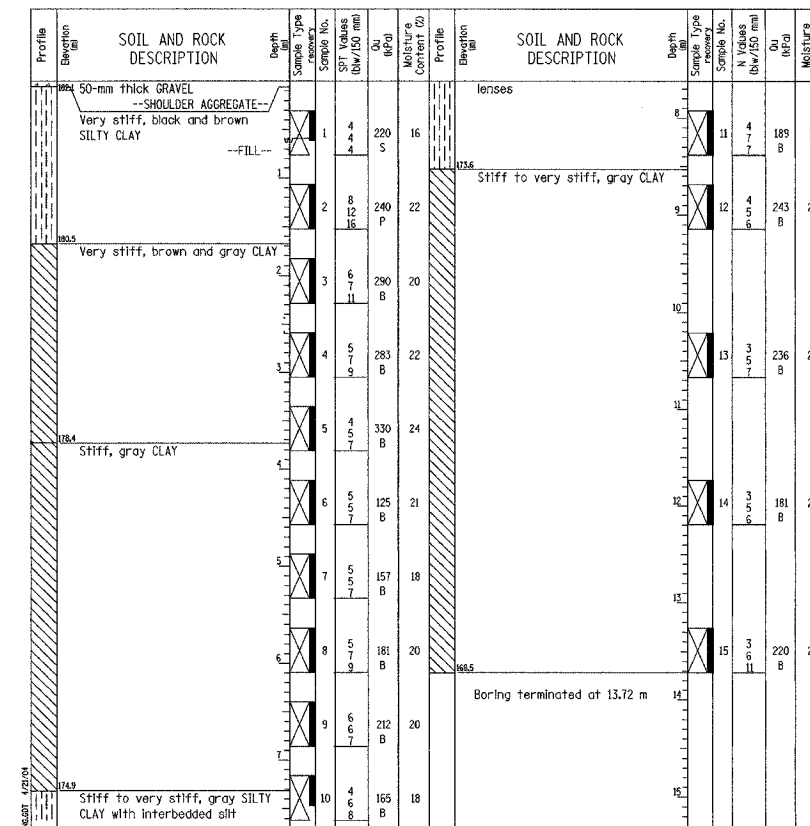
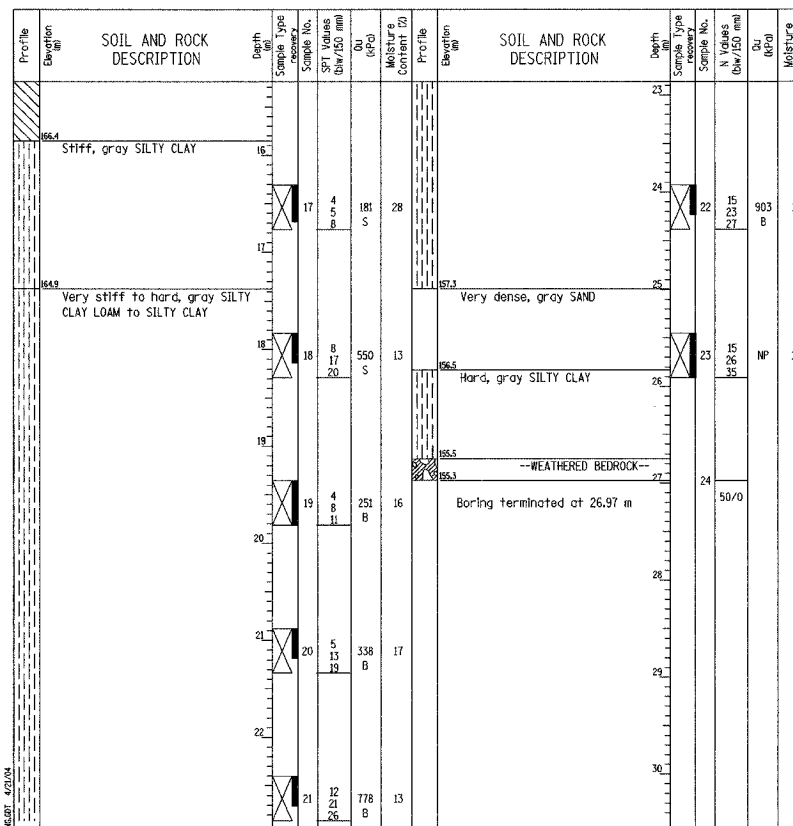
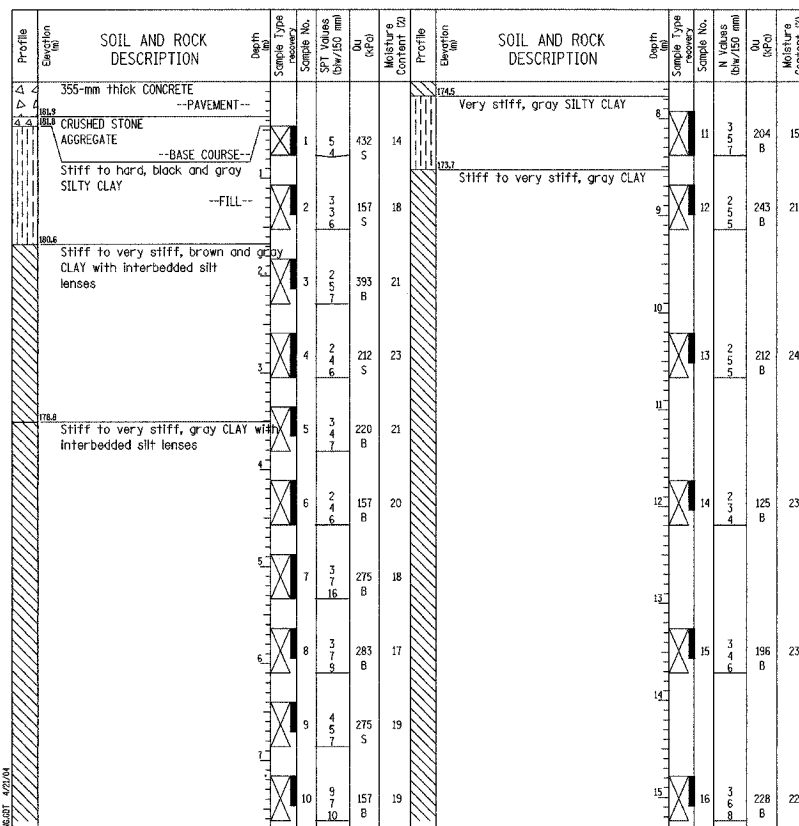
Date: NGVD  
Elevation: 182.28 m  
North: 54511.52 m  
East: 368363.89 m  
Station: 8+986.72  
Offset: 26.53 RT

**BORING LOG AR-306** Page 1 of 1

Wang Engineering, INC. Consulting Geotechnical and Environmental Engineers  
wongeng3@wongeng.com  
1145 Main Street  
Lombard, IL 60148  
Telephone: 630 953-9928  
Fax: 630 953-9938

WEI Job No.: 255-08-08  
Client: American Consulting Engineers  
Project: I-80/94, I-294 to US 41  
Location: s29 T36N R15E & s13 T36 R10W

Date: NGVD  
Elevation: 182.17 m  
North: 54510.45 m  
East: 368386.06 m  
Station: 9+008.91  
Offset: 21.69 RT



**GENERAL NOTES**

Begin Drilling 07-13-2003 Complete Drilling 07-14-2003

Drilling Contractor TSC Drill Rig CME 75

Driller C&A Logger J. Kasnick Checked by B. Fugalel

Drilling Method Mud rotary; Backfilled with bentonite chips after 24-hour water reading

**WATER LEVEL DATA**

While Drilling 7.16 m

At Completion of Drilling 1.98 m

Time After Drilling NA

Depth to Water NA

The stratification lines represent the approximate boundary between soil types; the actual transition may be graduel.

**GENERAL NOTES**

Begin Drilling 07-13-2003 Complete Drilling 07-14-2003

Drilling Contractor TSC Drill Rig CME 75

Driller C&A Logger J. Kasnick Checked by B. Fugalel

Drilling Method Mud rotary; Backfilled with bentonite chips after 24-hour water reading

**WATER LEVEL DATA**

While Drilling 7.16 m

At Completion of Drilling 1.98 m

Time After Drilling NA

Depth to Water NA

The stratification lines represent the approximate boundary between soil types; the actual transition may be graduel.

**GENERAL NOTES**

Begin Drilling 07-29-2003 Complete Drilling 07-29-2003

Drilling Contractor TSC Drill Rig CME 75

Driller C&A Logger J. Kasnick Checked by B. Fugalel

Drilling Method 3.25-in ID HSA; Boring backfilled upon final water reading

**WATER LEVEL DATA**

While Drilling 2.44 m

At Completion of Drilling 2.59 m

Time After Drilling 24 hours

Depth to Water 0.61 m

The stratification lines represent the approximate boundary between soil types; the actual transition may be graduel.

DESIGNED	KFA
CHECKED	BPS
DRAWN	MJB
CHECKED	GSP

ILLINOIS DEPARTMENT OF TRANSPORTATION  
I-80/94/US 6  
KINGERY-BORMAN EXPRESSWAY  
BURNHAM ROAD TO US 41

**BORING LOGS (5 OF 7)**  
**SECTION 2626.2-R-2**  
**LAKE COUNTY, INDIANA**  
**STATION 8+774.073 TO STATION 9+227.203**  
**STRUCTURE NO. 016-W861**

DATE 09/05

**AMERICAN**  
CONSULTING ENGINEERS