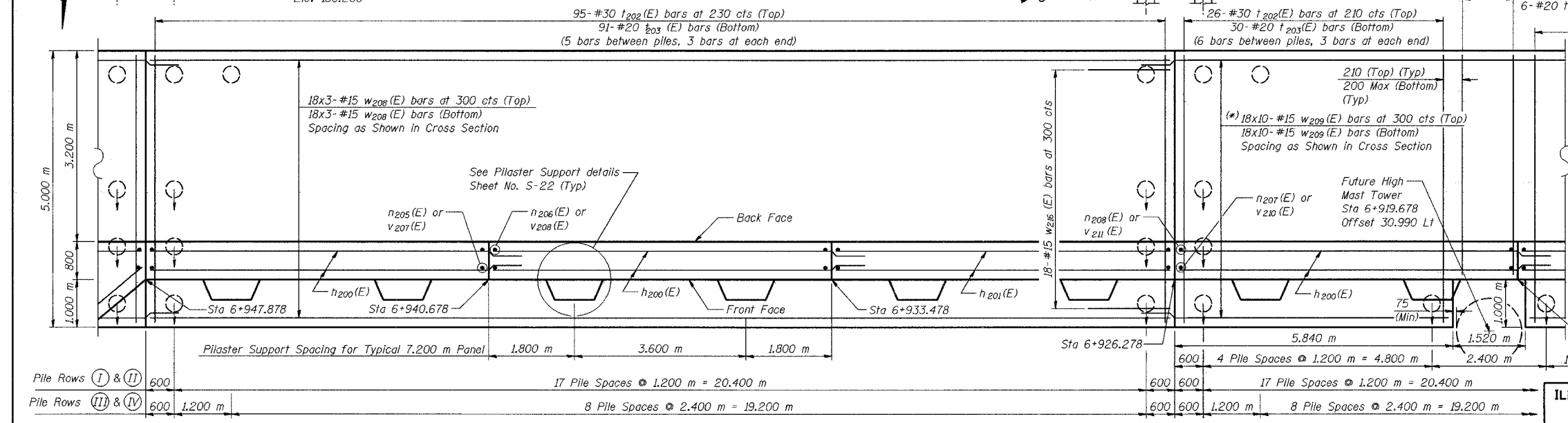
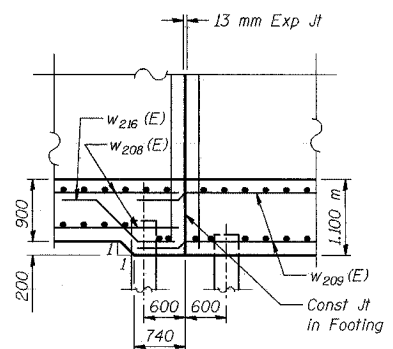
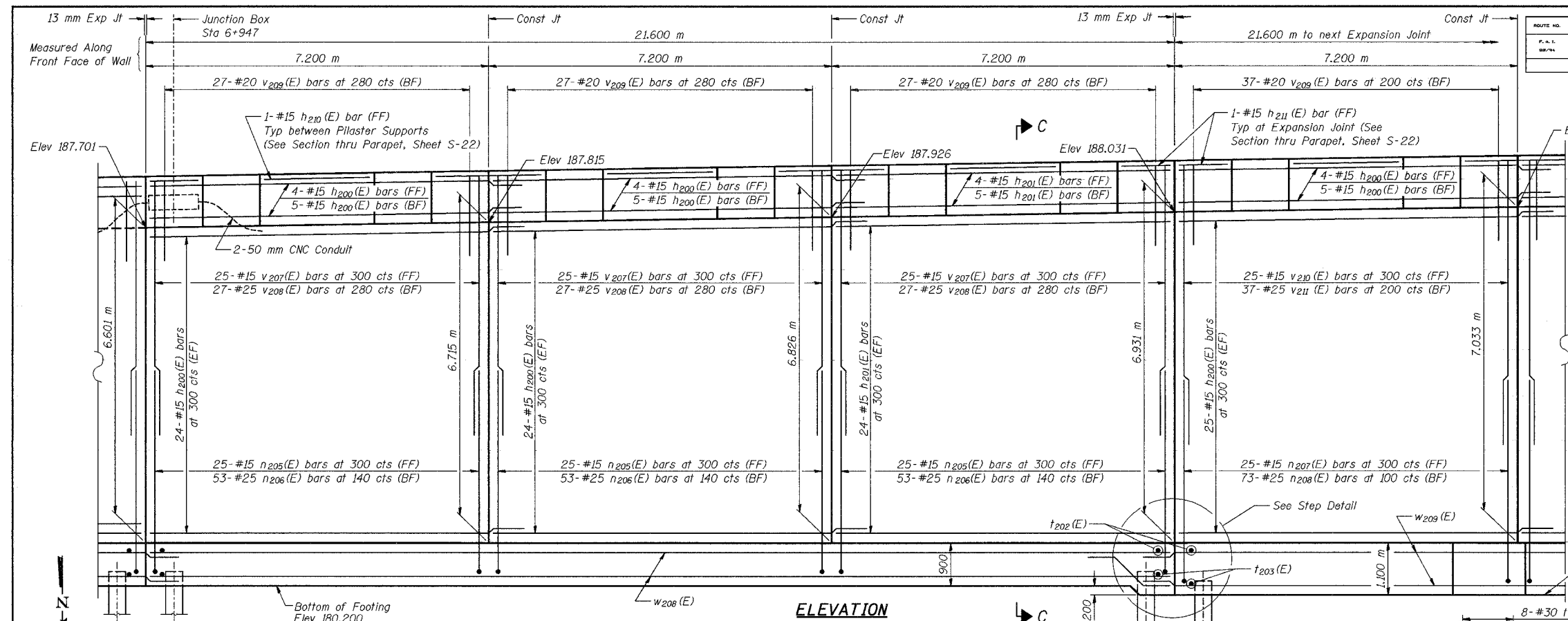


ROUTE NO.	SECTION	COUNTY	SHEET	SHEET NO. S-18
F.A.I.	2001-167R	COOK	1207	1000
DATE	10/74			35 SHEETS
ILLINOIS FEDERAL PROJECT: C-100-101-01				CONTRACT No. 62114



**NOTES:**

See Sheet S-22 for Section C-C, Pilaster Support details, and Bill of Material.

See Sheet S-23 for Rustication details and Expansion Joint Detail.

Stations are referenced to  $\pm$  I-80/94.

Reinforcement bars designated (E) shall be epoxy coated.

All dimensions are in millimeters (mm) except as noted.

(\*) Cut reinforcement bars to avoid cut-out in footing.

See Electrical Drawings for Junction Box and Conduit Details.

Bars indicated thus 20 x 3-#15 etc. indicates 20 lines of bars with 3 lengths per line.

Sta 6+919.078

DESIGNED	BHS
CHECKED	KFA
DRAWN	MJB
CHECKED	GSP

**MINIMUM BAR LAPS**

#15 bars = 640

#20 bars = 790

#25 bars = 1320

**LEGEND**

BF = Back Face

FF = Front Face

EF = Each Face

ILLINOIS DEPARTMENT OF TRANSPORTATION  
F.A.I. ROUTE 80/94 AND U.S. ROUTE 6  
LOCAL ROAD RECONSTRUCTION

PLAN AND ELEVATION (16 OF 19)  
SECTION 2001-167R  
COOK COUNTY  
STATION 6+850.000 to STATION 7+379.000  
STRUCTURE NO. 016-W874

DATE 07/05

**AMERICAN**  
CONSULTING ENGINEERS

FOR INFORMATION ONLY