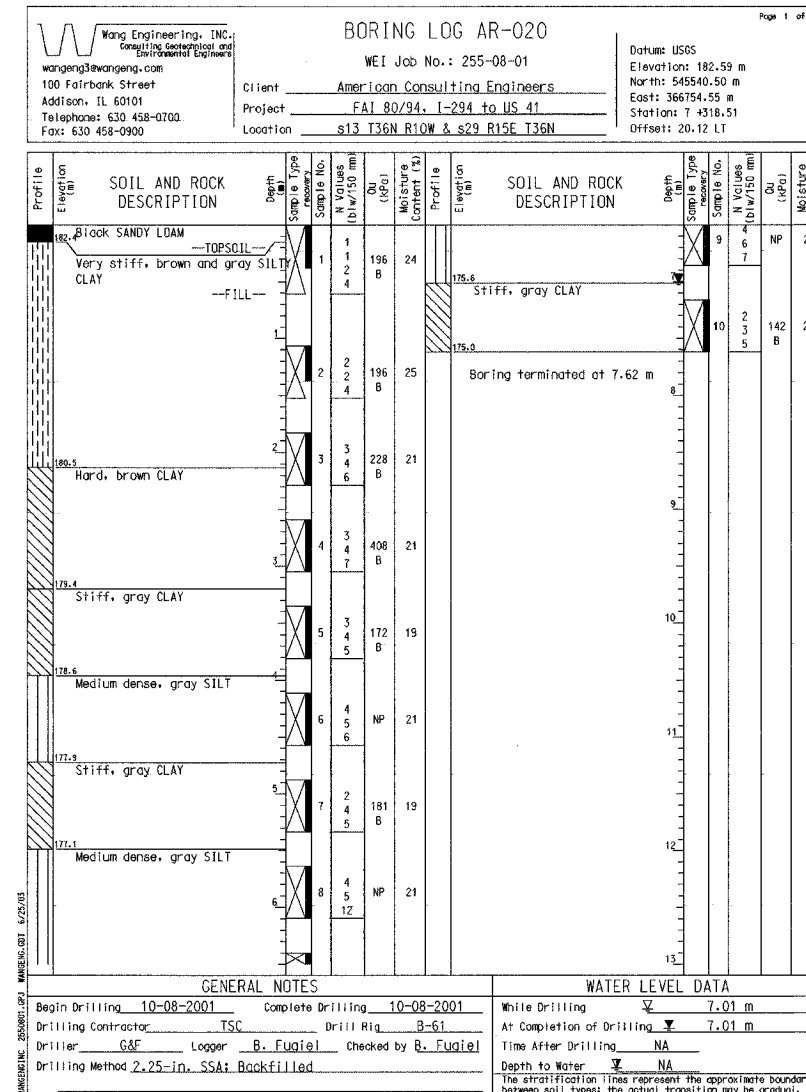
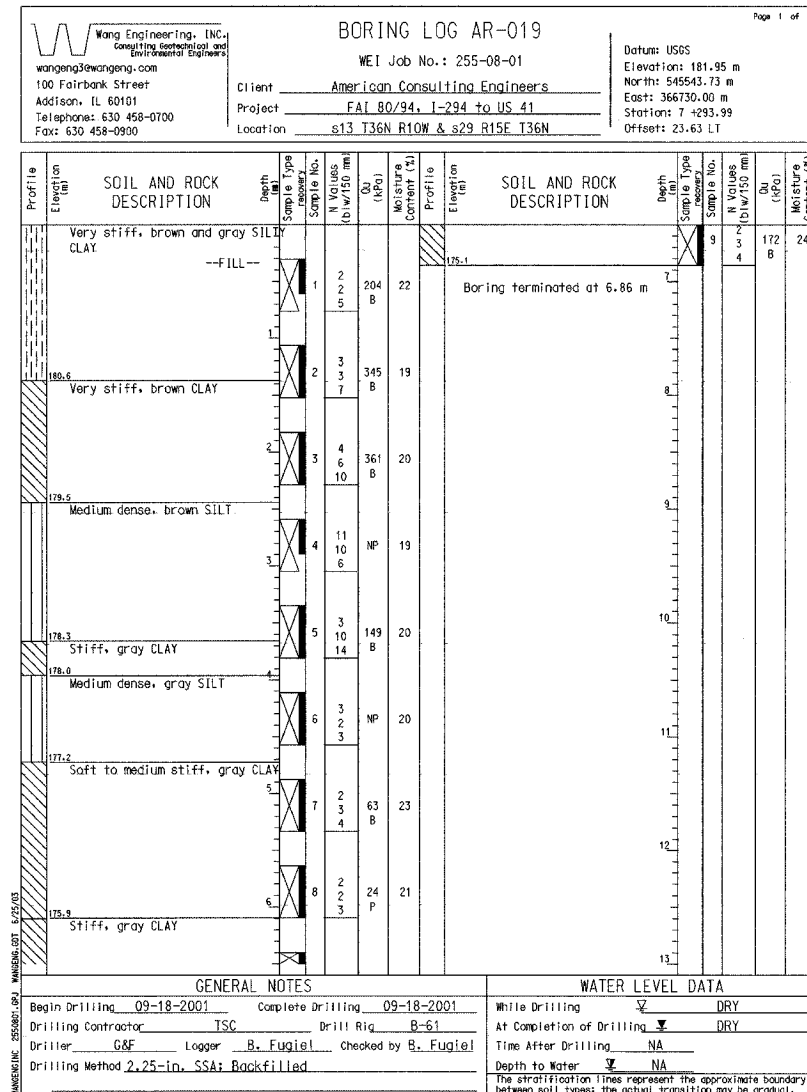


**BORING NO. AR-019 (1 OF 1)**

**BORING NO. AR-020 (1 OF 1)**



DESIGNED	BHS
CHECKED	KFA
DRAWN	MJB
CHECKED	GSP

ILLINOIS DEPARTMENT OF TRANSPORTATION  
F.A.I. ROUTE 80/94 AND U.S. ROUTE 6  
LOCAL ROAD RECONSTRUCTION

**BORING LOGS (11 OF 11)**  
SECTION 2001-167R  
COOK COUNTY  
STATION 6+850.000 to STATION 7+379.000  
STRUCTURE NO. 016-W874  
DATE 07/05

**AMERICAN**  
CONSULTING ENGINEERS

FOR INFORMATION ONLY